

Lockers, Cupboards & Cloakroom

Cube Lockers

- » An excellent way of providing secure storage for personal & valuable items in offices, call centres & schools where space is at a premium
- » Fitted with standard mastered cam locks with 2,000 differs
- » Rubber door buffers
- » Powder coated with Germ Guard Active Technology paint
- » Pre-drilled for nesting or wall mounting
- » Available with internal shelf - call for details
- » Reaction to Fire Classification EN 13501-1

FROM ONLY
£49.44

DOOR COLOUR OPTIONS

- Green
 - Light Blue
 - Dark Blue
 - Red
 - Yellow
 - Light Grey
- specify when ordering*



Overall Size H x W x D mm	Model	Price
300 x 300 x 300	UG303030Z	£49.44
380 x 380 x 380	UG383838Z	£58.05
450 x 450 x 450	UG464646Z	£63.42
Internal Shelf for UG464646Z	UGES4646Z	£26.48

School Lockers

- » Choice of 300mm, 380mm & 450mm depths
- » Manufactured from 0.7mm steel to withstand the wear & tear of daily usage
- » Lockers fitted with galvanised security shelf to prevent any unauthorised access to the compartment below
- » Fitted with standard, mastered cam locks with 2,000 differs
- » Single tier lockers are fitted with a top shelf & coat hook & two tier lockers are fitted with a coat hook in each compartment
- » Strengthened & ventilated doors with rubber buffers
- » Powder coated with Germ Guard Active Technology paint
- » Complete with rust resisting galvanised shelves
- » Reaction to Fire Classification EN 13501-1
- » Also available in 900H & 1100Hmm - please call for details

FROM ONLY
£89.60



DOOR COLOUR OPTIONS

- Green
 - Light Blue
 - Dark Blue
 - Red
 - Yellow
 - Light Grey
 - Dark Grey
- specify when ordering*



Overall Size H x W x D mm	1 Tier		2 Tier		3 Tier		4 Tier	
	Model	Price	Model	Price	Model	Price	Model	Price
1380 x 300 x 300	LD1330301	£89.60	LD1330302	£110.17	LD1330303	£123.37	LD1330304	£128.18
1380 x 300 x 450	LD1330451	£104.38	LD1330452	£122.89	LD1330453	£136.31	LD1330454	£148.89
1380 x 380 x 380	LD1338381	£107.83	LD1338382	£119.47	LD1338383	£130.18	LD1338384	£147.25

Express Lockers



Our range of Express Lockers comprise of the same high quality design as our Standard Lockers but are available on a 5 Day Delivery lead time. Express Lockers are kept in stock with a selection of four compartment options with a choice of either Light Grey or Dark Blue doors.

- » Choice of 300mm & 450mm depths
- » 1, 2, 4 & 6 door lockers fitted with galvanised security shelf to prevent any unauthorised access to the compartment below
- » Fitted with standard, mastered cam locks with 2,000 differs
- » Single tier lockers fitted with top shelf & coat hook
- » Two tier lockers fitted with coat hook in each compartment
- » Strengthened & ventilated doors with rubber buffers
- » Powder coated with Germ Guard Active Technology paint
- » Order quantities may apply - please contact us for more details
- » Complete with rust resisting galvanised shelves
- » Reaction to Fire Classification EN 13501-1

Tiers	Model	Price
Express Lockers - 1800H x 300W x 300D mm		
1	LQ1830301	£89.22
2	LQ1830302	£109.69
4	LQ1830304	£127.63
6	LQ1830306	£156.39



Tiers	Model	Price
Express Lockers - 1800H x 300W x 450D mm		
1	LQ1830451	£103.92
2	LQ1830452	£123.50
4	LQ1830454	£148.23
6	LQ1830456	£169.81

Standard Lockers



Interior Coat Hook



Door Ventilation



Door Stiffener

DOOR COLOUR OPTIONS

- Green
- Light Blue
- Dark Blue
- Red
- Yellow
- Dark Grey
- Light Grey

specify when ordering

- » Choice of 300mm, 380mm & 450mm depths
- » Lockers fitted with galvanised security shelf to prevent any unauthorised access to the compartment below
- » Fitted with standard, mastered cam locks with 2,000 differs
- » Single tier lockers fitted with top shelf & coat hook
- » Two tier lockers fitted with coat hook in each compartment
- » Strengthened & ventilated doors with rubber buffers
- » Powder coated with Germ Guard Active Technology paint
- » Complete with rust resisting galvanised shelves
- » Reaction to Fire Classification EN 13501-1



Information

**REACTION TO FIRE
CLASSIFICATION
EN 13501-1**

Overall Size H x W x D mm	1 Tier		2 Tier		3 Tier		4 Tier		5 Tier		6 Tier	
	Model	Price	Model	Price	Model	Price	Model	Price	Model	Price	Model	Price
1800 x 300 x 300	LS1830301	£87.43	LS1830302	£107.50	LS1830303	£120.37	LS1830304	£125.07	LS1830305	£139.16	LS1830306	£153.26
1800 x 300 x 450	LS1830451	£101.85	LS1830452	£119.90	LS1830453	£133.00	LS1830454	£145.27	LS1830455	£155.84	LS1830456	£166.42
1800 x 380 x 380	LS1838381	£105.21	LS1838382	£116.57	LS1838383	£127.01	LS1838384	£143.67	LS1838385	£161.02	LS1838386	£167.45
1800 x 450 x 450	LS1845451	£115.10	LS1845452	£130.76	LS1845453	£150.04	LS1845454	£166.50	LS1845455	£169.91	LS1845456	£173.31

elite Lockers

- >> Anti-bacterial satin gloss finish. BS Class '0' rated product
- >> Robust steel construction with rebated doors
- >> Fitted with standard cam locks with 4,000 differs or padlock fitting - please specify when ordering. Other locks available - please see below



Overall Size H x W x D mm	Clear Entry H x W x D mm	Model	Price
Single Door (c/w top shelf & double coat hook)			
1800 x 300 x 300	1410 x 235 x 275	1830301	£80.00
1800 x 300 x 450	1410 x 235 x 425	1830451	£97.00
1800 x 450 x 450	1410 x 385 x 425	1845451	£115.00
Two Door (c/w double coat hook)			
1800 x 300 x 300	835 x 235 x 275	1830302	£102.00
1800 x 300 x 450	835 x 235 x 425	1830452	£112.00
1800 x 450 x 450	835 x 385 x 425	1845452	£133.00
Three Door			
1800 x 300 x 300	540 x 235 x 275	1830303	£111.00
1800 x 300 x 450	540 x 235 x 425	1830453	£127.00
Four Door			
1800 x 300 x 300	400 x 235 x 275	1830304	£123.00
1800 x 300 x 450	400 x 235 x 425	1830454	£137.00
1800 x 450 x 450	400 x 385 x 425	1845454	£162.00
Six Door			
1800 x 300 x 300	260 x 235 x 275	1830306	£148.00
1800 x 300 x 450	260 x 235 x 425	1830456	£160.00



Locker Accessories



Overall Size W x D mm	Model	Price
Factory Fitted Sloping Top (150mm high)		
300 x 300	ST3030	£11.00
300 x 450	ST3045	£12.00
450 x 450	ST4545	£13.00
Locker Stand (150mm high)		
300 Width*	LS30	£29.00
450 Width*	LS45	£38.00
600 Width*	LS60	£43.00
900 Width*	LS90	£58.00
*Supplied to suit locker depth		
Master key for key operated Locks		
-	MKEY	£20.00

Padlock Fitting



Model	Price
PADL	Please specify

Budget Combi Lock



Model	Price
COML	£29.00

Electronic Combi Lock



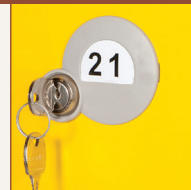
Model	Price
ECOML	£53.00

Coin Return



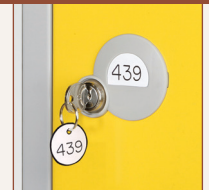
Model	Price
COINL	£25.00

Vinyl Numbering



Model	Price
NUM	£2.00

Key Fob



Model	Price
FOB	£2.00

Premium Lockers



**FROM ONLY
£109.12**



DOOR COLOUR OPTIONS

- Orange (RAL2003)
- Ocean (RAL5024)
- Jade (RAL6021)
- Lemon (RAL1016)
- Lilac (RAL4008)
- White (RAL9016)
- Black (RAL9004)
- Silver (RAL9006)

specify when ordering

BODY COLOUR OPTIONS

- White (RAL9016)
- Black (RAL9004)
- Silver (RAL9006)

specify when ordering

- » Manufactured to conform to BS 4680:1996 'Standard Duty' (excluding size specification), ISO 9001:2000 & Environmental Management System ISO 14001:2004. They are also manufactured in accordance with the Health & Safety certification OHSAS 18001
- » Air vent system on each door with welded internal door strengtheners & 5 knuckle hinges
- » 10 micro spring disk lock » Through frame locking

Overall Size H x W x D mm	1 Tier		2 Tier		3 Tier		4 Tier		5 Tier		6 Tier	
	Model	Price	Model	Price	Model	Price	Model	Price	Model	Price	Model	Price
1780 x 305 x 305	701212	£109.12	701212/2	£142.75	701212/3	£154.86	701212/4	£165.59	701212/5	£177.29	701212/6	£204.16
1780 x 305 x 380	701215	£117.10	701215/2	£148.41	701215/3	£163.07	701215/4	£178.43	701215/5	£184.33	701215/6	£207.23
1780 x 305 x 460	701218	£130.43	701218/2	£159.29	701218/3	£173.62	701218/4	£186.00	701218/5	£194.51	701218/6	£222.36

elite White Lockers

- » Anti-bacterial powder coating - RAL 9010
- » Robust steel construction with rebated doors
- » Fitted with standard cam locks with 4,000 differs or padlock fitting - please specify when ordering. Other locks available - please see below



FROM ONLY
£84.00



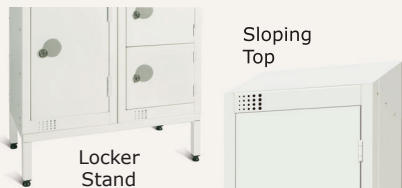
i Information

**CONSTRUCTED FROM
0.7 - 0.9MM STEEL
COMPONENTS**



Overall Size H x W x D mm	Clear Entry H x W x D mm	Model	Price
Single Door (c/w top shelf & double coat hook)			
1800 x 300 x 300	1410 x 235 x 275	1830301W	£84.00
1800 x 300 x 450	1410 x 235 x 425	1830451W	£102.00
Two Door (c/w double coat hook)			
1800 x 300 x 300	835 x 235 x 275	1830302W	£107.00
1800 x 300 x 450	835 x 235 x 425	1830452W	£117.00
Three Door			
1800 x 300 x 300	540 x 235 x 275	1830303W	£116.00
1800 x 300 x 450	540 x 235 x 425	1830453W	£134.00
Four Door			
1800 x 300 x 300	400 x 235 x 275	1830304W	£130.00
1800 x 300 x 450	400 x 235 x 425	1830454W	£144.00
1800 x 450 x 450	400 x 385 x 425	1845454W	£170.00
Six Door			
1800 x 300 x 300	260 x 235 x 275	1830306W	£156.00
1800 x 300 x 450	260 x 235 x 425	1830456W	£168.00

Locker Accessories



Sloping
Top

Locker
Stand

Overall Size W x D mm	Model	Price
Factory Fitted Sloping Top (150mm high)		
300 x 300	ST3030	£11.00
300 x 450	ST3045	£12.00
450 x 450	ST4545	£13.00
Locker Stand (150mm high)		
300 Width*	LS30	£29.00
450 Width*	LS45	£38.00
600 Width*	LS60	£43.00
900 Width*	LS90	£58.00
*Supplied to suit locker depth		
Master key for key operated Locks		
-	MKEY	£20.00

Padlock Fitting



Model	Price
PADL	Please specify

Premium Combi Lock



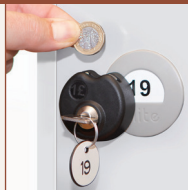
Model	Price
PCOML	£29.00

Electronic Combi Lock



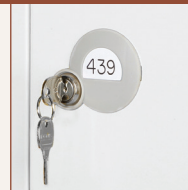
Model	Price
ECOML	£53.00

Coin Return



Model	Price
COINL	£25.00

Vinyl Numbering



Model	Price
NUM	£2.00

Key Fob



Model	Price
FOB	£2.00

Workwear & Vision Panel Lockers

- » Anti-bacterial powder coating
- » Robust steel construction with coloured doors
- » Fitted with standard cam locks with 4,000 differs or padlock fitting - please specify when ordering. Other locks available - please see page 69

Combi Locker

- » Ideal for hanging workwear clothing
- » Vertical hanging compartment with hanging rail & smaller storage compartments
- » Galvanised internal components

Clean & Dirty Locker

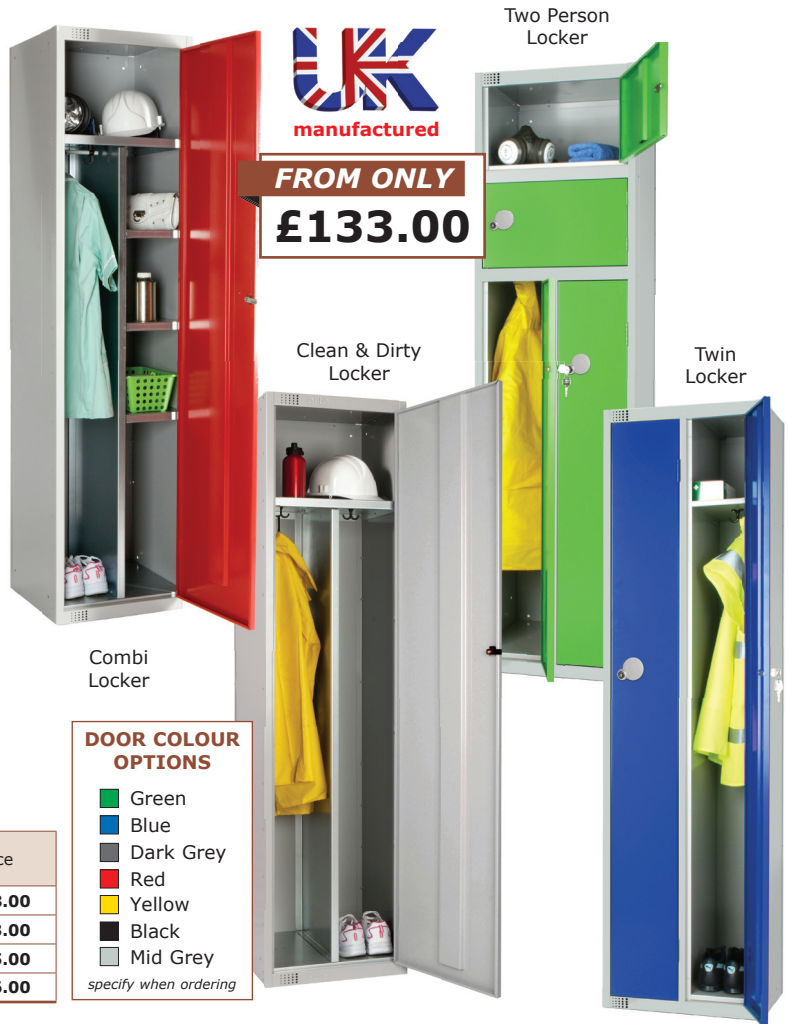
- » Two vertical hanging compartments to separate workwear & daywear

Two Person Locker

- » Space saving unit for 2 users
- » Each user has a vertical hanging space & a smaller possession compartment

Twin Locker

- » Space saving unit for 2 users
- » Each user has a slim vertical hanging space with shelf & double coat hook



Vision Panel Lockers

- » Anti-bacterial powder coating
- » Allows compartment inspection from outside the door - deters concealment within locker
- » Robust steel construction with rebated doors with engineered plastic (PET) clear vision panel
- » Fitted with standard cam locks with 4,000 differs or padlock fitting - please specify when ordering. Other locks available - please see page 69 (coin lock can only be fitted to the two door locker)



DOOR COLOUR OPTIONS

- Mid Grey
- Blue

specify when ordering

Overall Size H x W x D mm	Model	Price
Two Door		
1800 x 300 x 300	1830302VP	£200.00
1800 x 300 x 450	1830452VP	£211.00
Four Door		
1800 x 300 x 300	1830304VP	£227.00
1800 x 300 x 450	1830454VP	£242.00
Six Door		
1800 x 300 x 300	1830306VP	£275.00
1800 x 300 x 450	1830456VP	£285.00
Eight Door		
1800 x 300 x 300	1830308VP	£330.00
1800 x 300 x 450	1830458VP	£348.00



Personal Effect Lockers



Blue &
Light Grey



manufactured



Compartment Close Up



Locking Mechanism



LR909038Y



LR184538Y



LR189038F

- » Fitted with standard mastered cam locks with 2,000 differs
- » Through frame shelf for extra security
- » Compartment entry aperture: 150H x 163W x 360D mm
- » Powder coated with Germ Guard Active Technology paint
- » Pre-drilled for nesting
- » Reaction to Fire Classification EN 13501-1
- » PEL lockers are fitted with a security shelf to prevent unauthorised access to the compartment below
- » Order quantities may apply - please speak to sales

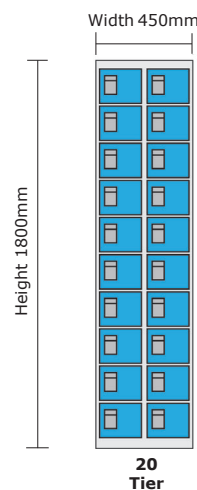
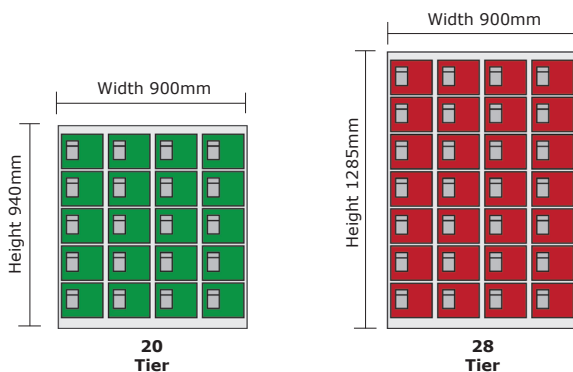
FROM ONLY
£319.60

Germ Guard
Active Technology

DOOR COLOUR OPTIONS

- Green
- Blue
- Red
- Light Grey

specify when ordering



Overall Size H x W x D mm	No of Compartments	Model	Price
940 x 900 x 380	20	LR909038Y	£319.60
1285 x 900 x 380	28	LR129038H	£454.66
1800 x 450 x 380	20	LR184538Y	£319.60
1800 x 900 x 380	40	LR189038F	£616.25

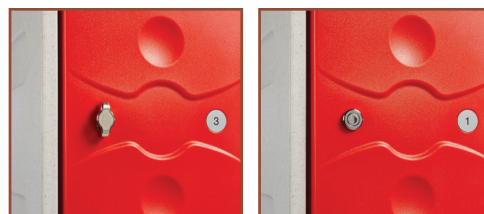
IP-PL/180/325/450/4

Plastic Lockers

- » MDPE plastic lockers which are anti-bacterial & fully recyclable
- » UV resistant with a HALS (hindered amine light stabiliser) moulded in
- » Robust design which resists dents & scratches
- » Strong hidden hinges fitted with high tensile pins
- » Compartment drain holes allows water to drain out - ideal for cleaning
- » Plus lockers are fitted with an internal neoprene seal to create a virtual watertight seal. A must for any outdoor applications or where there is a risk of moisture or spray that could ingress into the compartments
- » Complete with either a water resistant hasp lock or water resistant cam lock - please specify when ordering (*if not specified Cam Lock will be supplied)

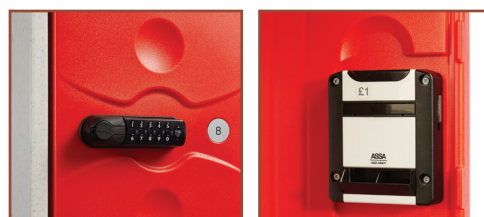


Optional Sloping Top



Water Resistant Hasp Lock fitted included in prices*

Water Resistant Cam Lock fitted included in prices



Optional Waterproof Digital Combination Lock

Optional Waterproof Coin Return Lock 'TYPE 7'



DOOR COLOUR OPTIONS

- Blue
- Yellow
- Grey
- Red

specify when ordering



IP-PL/180/325/450/2

IP-PL/180/325/450/3



Neoprene seal fitted to Plus Version Lockers

Plastic Lockers

Tiers	Overall Size H x W x D mm	Shower Lockers		Plus Lockers	
		Model	Price	Model	Price
2	1800 x 325 x 450	SH-PL/180/325/450/2	£456.87	IP-PL/180/325/450/2	£551.76
3	1800 x 325 x 450	SH-PL/180/325/450/3	£466.97	IP-PL/180/325/450/3	£589.64
4	1800 x 325 x 450	SH-PL/180/325/450/4	£463.20	IP-PL/180/325/450/4	£612.33

Optional Extras

Description	Model	Price
Sloping Top	SLOPING TOP	£64.37
Fully Waterproof Cam Lock*	TYPE 3	£21.83 per lock
Programmable 4 Digit Number finding Key	TYPE 5	£44.93 per lock
Water Resistant 4 Digit Combination Lock with override key	TYPE 6	£104.00 per lock
Fully Waterproof Coin Return Lock*	TYPE 7	£97.68 per lock
Fully Waterproof Coin Retain Lock*	TYPE 8	£124.95 per lock
Fully Waterproof Digital Combination Lock*	TYPE 9	£125.63 per lock

*Suitable for use with the Plastic Lockers

Flat Garment Lockers

- » Enables work clothing to be issued when cleaned, & exchanged when dirty
- » Clothing compartments can be accessed individually or collectively using the master door
- » Fitted with standard, mastered cam locks with 2,000 differs
- » Doors are fitted with rubber buffers to prevent scratching
- » Pre-drilled for nesting
- » Powder coated with Germ Guard Active Technology paint
- » Reaction to Fire Classification EN 13501-1
- » Other door colour options available on minimum order quantity - please call for details

DOOR COLOUR OPTIONS

- Light Grey
- Dark Blue

specify when ordering



FROM ONLY

£223.77



LF183845Y



LF183845W



LF183845S

Overall Size H x W x D mm	5 Tier		10 Tier		12 Tier		15 Tier		20 Tier	
	Model	Price	Model	Price	Model	Price	Model	Price	Model	Price
1800 x 380 x 450	LF183845S	£223.77	LF183845N	£273.35	LF183845W	£297.41	LF183845Q	£327.16	LF183845Y	£379.57
1800 x 450 x 380	LF184538S	£223.77	LF184538N	£273.35	LF184538W	£297.41	LF184538Q	£327.16	-	-

Garment Disposal Lockers

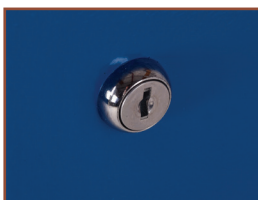
- » Enables dirty work wear to be deposited & collected for cleaning
- » Suitable for use in any industrial environment where a uniform or work wear cleaning service is provided
- » Fitted with 3 point locking cam locks with 2,000 differs
- » Letter box opening to receive approx. 45 garments
- » Door fitted with rubber buffers
- » Powder coated with Germ Guard Active Technology paint
- » Reaction to Fire Classification EN 13501-1
- » Other door colour options available on minimum order quantity - please call for details



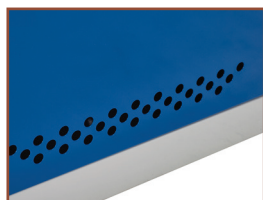
Garment opening



Coat hooks



Cam lock



Ventilated doors



DOOR COLOUR OPTIONS

- Light Grey
- Dark Blue

specify when ordering

FROM ONLY

£205.80



LL1845451

Overall Size H x W x D mm	Model	Price
1800 x 380 x 450	LL1838451	£205.80
1800 x 450 x 380	LL1845451	£214.66



Laminate Lockers

As the door is normally the part of the locker that comes in for the most punishment, we offer this premium quality laminate door locker, without a premium price tag. The door fits neatly inside the frame and opens a full 180 degrees. Tough, solid laminate doors are highly resistant to dents and scratches and will not rust. Ideal for places where lockers are frequently used, such as in schools & colleges.

- » Fitted with standard mastered cam locks with 2,000 differs
- » Two sizes & five door configurations
- » 2, 3 & 4 door lockers fitted with security shelf to prevent unauthorised access to the compartment below
- » End panels also available
- » Pre-drilled for nesting
- » Steel carcass powder coated in light grey

DOOR COLOUR OPTIONS

- Spectrum Red
 - Campanula
 - Spectrum Yellow
 - Aquamarine
 - Light Grey
 - Vibrant Green
 - Graphite Grey
 - Clementine
 - Oak
 - Beech
- specify when ordering*

FROM ONLY
£181.25



Tiers	Model	Price
Laminate Lockers - 1800H x 300W x 300D mm		
1	LU1830301	£181.25
2	LU1830302	£211.66
3	LU1830303	£241.20
4	LU1830304	£271.21
6	LU1830306	£307.91
End Panel	LVEP18301	£152.39

Tiers	Model	Price
Laminate Lockers - 1800H x 300W x 450D mm		
1	LU1830451	£189.45
2	LU1830452	£219.88
3	LU1830453	£250.40
4	LU1830454	£281.37
6	LU1830456	£319.74
End Panel	LVEP18451	£214.17

Z-Door Lockers



LAMINATE DOOR COLOUR OPTIONS

- Spectrum Red
 - Campanula
 - Spectrum Yellow
 - Aquamarine
 - Light Grey
 - Vibrant Green
 - Graphite Grey
 - Clementine
 - Oak
 - Beech
- specify when ordering*

STEEL DOOR COLOUR OPTIONS

- Light Blue
 - Red
 - Blue
 - Yellow
 - Light Grey
 - Green
- specify when ordering*

An attractive yet extremely robust locker, ideal for when space is at a premium. These lockers are designed so that each compartment can comfortably hang up a coat on the fitted hook. Each locker compartment also has space available to store small personal effects.

- » Doors are available in steel or high quality laminate for extra durability
- » Fitted with standard mastered cam locks, with 2,000 differs.
- » Choice of 300mm or 450mm widths
- » Powder coated with Germ Guard Active Technology Anti-Bacterial paint
- » Reaction to Fire Classification EN13501-1
- » Available in minimum order quantities of 8



FROM ONLY
£273.83

Overall Size H x W x D mm	Door Material	Model	Price
1800 x 300 x 450	Steel	LZD183045	£273.83
1800 x 450 x 450	Steel	LZD184545	£300.55
1800 x 300 x 450	Laminate	LZU183045	£387.66
1800 x 450 x 450	Laminate	LZU184545	£421.37

Steel Splash Lockers

These lockers are manufactured from pre-coated galvanised steel for damp environments or where frequent washing down is required.

- » Strengthened & ventilated doors with rubber buffers
- » Single tier lockers fitted with top shelf & coat hook
- » Two tier lockers fitted with coat hook in each compartment
- » Powder coated with Germ Guard Active Technology anti-bacterial paint
- » Hinges are 75mm deep - offers greater quality & durability
- » Ideal for swimming pools, changing rooms, saunas, industrial wet areas & food preparation plants
- » 2, 3 & 4 door lockers fitted with security shelf to prevent unauthorised access to the compartment below
- » Moisture resistant cam locks are fitted as standard for superior lock durability in moist environments
- » Lateral security beam enhances the security of the product



Tiers	Model	Price
Steel Splash Lockers - 1800H x 300W x 300D mm		
1	LW1830301	£129.98
2	LW1830302	£149.34
3	LW1830303	£168.69
4	LW1830304	£188.06

Tiers	Model	Price
Steel Splash Lockers - 1800H x 300W x 450D mm		
1	LW1830451	£138.28
2	LW1830452	£156.24
3	LW1830453	£178.38
4	LW1830454	£199.11

Laminate Splash Lockers

Tough, solid laminate doors are highly resistant to dents & scratches & will not rust, which makes them the ideal solution for placing in wet areas such as swimming pools and changing rooms

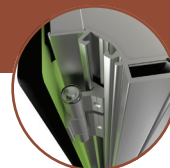
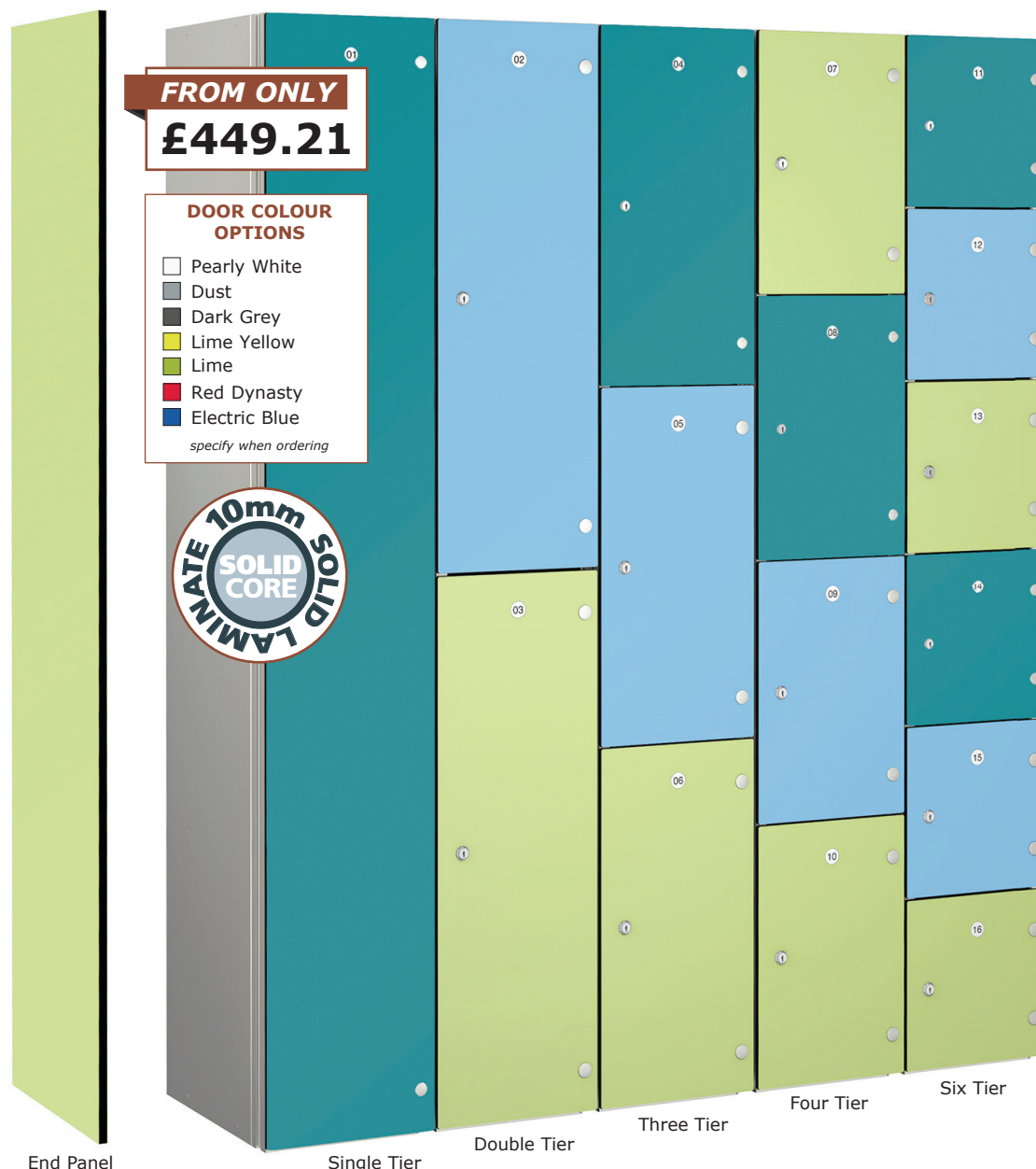
- » Pre-drilled for nesting
- » Pre-galvanised steel carcass
- » Fitted with moisture resistant cam locks
- » Two sizes & four door configurations
- » 2, 3 & 4 door lockers fitted with security shelf to prevent unauthorised access to the compartment below
- » Wide range of door & end panel colours available
- » Please check laminate colour availability with sales prior to order



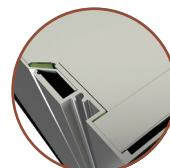
Tiers	Model	Price
Laminate Splash Lockers - 1800H x 300W x 300D mm		
1	LZ1830301	£191.30
2	LZ1830302	£227.69
3	LZ1830303	£263.36
4	LZ1830304	£299.51
6	LZ1830306	£327.53
End Panel	LVEP18301	£152.39

Tiers	Model	Price
Laminate Splash Lockers - 1800H x 300W x 450D mm		
1	LZ1830451	£200.20
2	LZ1830452	£236.63
3	LZ1830453	£273.31
4	LZ1830454	£310.50
6	LZ1830456	£340.09
End Panel	LVEP18451	£214.17

Aluminium Framed Lockers with Laminate Doors



Concealed Self Closing Hinge



Flush Frame For Zero Gap



Optional Inset Number Plates



Sloping Top



Hasp & Staple



Probe Cam Lock

*Included in locker price
(Wet Environment
Locks Price Differs)*

- » Lockers are designed and engineered to last, every component is manufactured from materials which will not degrade when exposed to chlorinated & humid atmospheres
- » Aluminium body with reduced radius corners give full width shelf to back of locker
- » Aluminium shelves, fixed firmly into position adding rigidity to the locker
- » Doors manufactured from 10mm solid grade laminate
- » Heavy duty self-closing hinges engineered to prevent the doors opening across adjacent compartment
- » A range of quality engineered locks available for wet, humid or dry environments
- » All lockers are supplied fully assembled & can be nested side by side with no visible gaps
- » Extruded aluminium frames engineered for added strength & stability

* Single tier lockers include top shelf and double coat hook

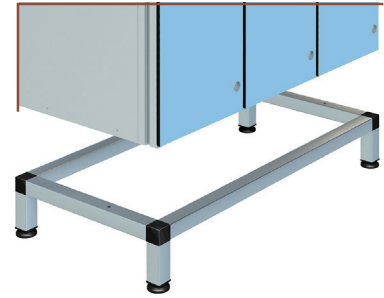
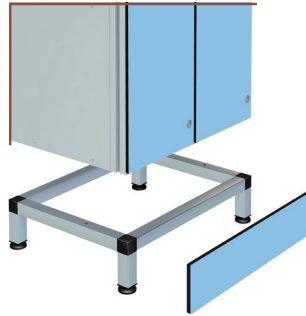
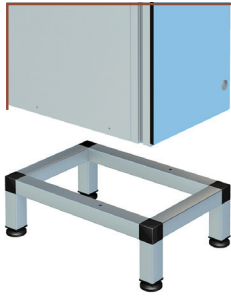
** Double tier lockers include double coat hook per compartment

Overall Size H x D mm	Model	Price
Effect End Panels for lockers		
1800 x 400	ZEN-END-12	£217.60
1800 x 450	ZEN-END-15	£244.81
1800 x 500	ZEN-END-18	£272.00
Effect End Panels for Lockers with Stands		
1950 x 400	ZEN-END-12STANDS	£236.10
1950 x 450	ZEN-END-15STANDS	£265.63
1950 x 500	ZEN-END-18STANDS	£295.09
Sloping Top		
-	SLOPING TOP	£92.72
Aluminium Round Number Cut Into Door		
-	RNR	£4.08
Engraved Door - Letter or Number per digit		
-	ENGDO	£6.79

Overall Size H x W x D mm	Single Tier*		Two Tier**		Three Tier		Four Tier		Six Tier	
	Model	Price	Model	Price	Model	Price	Model	Price	Model	Price
1800 x 300 x 400	ZEN-180-30-40	£449.21	ZEN-300-400/2	£510.42	ZEN-300-400/3	£593.56	ZEN-300-400/4	£659.02	ZEN-300-400/6	£868.08
1800 x 300 x 450	ZEN-180-30-45	£456.60	ZEN-300-450/2	£517.56	ZEN-300-450/3	£602.95	ZEN-300-450/4	£666.50	ZEN-300-450/6	£878.54
1800 x 300 x 500	ZEN-180-30-50	£478.09	ZEN-300-500/2	£546.06	ZEN-300-500/3	£627.32	ZEN-300-500/4	£689.09	ZEN-300-500/6	£897.35
1800 x 400 x 400	ZEN-180-40-40	£496.83	ZEN-400-400/2	£561.51	ZEN-400-400/3	£656.83	ZEN-400-400/4	£720.84	ZEN-400-400/6	£963.39
1800 x 400 x 450	ZEN-180-40-45	£504.22	ZEN-400-450/2	£568.80	ZEN-400-450/3	£666.50	ZEN-400-450/4	£730.01	ZEN-400-450/6	£973.82

Locker Support Stands

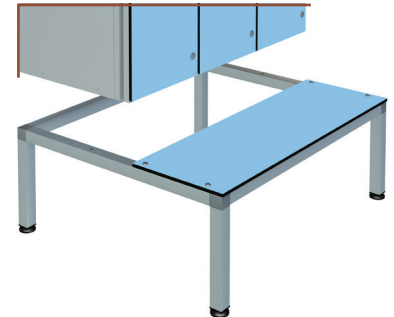
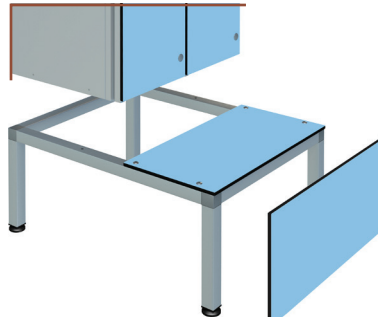
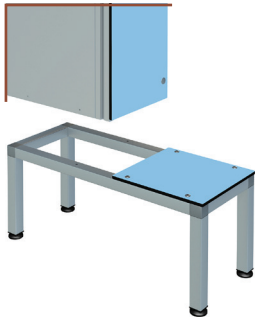
- >> Locker support stands raise lockers off the floor, reducing impact damage & making cleaning easier
- >> Manufactured from 25mm square aluminium section they are ideal for wet environments
- >> Overall height: 150mm



To Suit Locker Size W x D mm	Stand for Single Locker		Stand for Nest of 2 Lockers		Stand for Nest of 3 Lockers	
	Model	Price	Model	Price	Model	Price
300 x 400	STAND-ZEN-180-30-40	£88.60	STAND-ZEN-180-30-40/N2	£91.77	STAND-ZEN-180-30-40/N3	£97.39
300 x 450	STAND-ZEN-180-30-45	£88.60	STAND-ZEN-180-30-45/N2	£91.77	STAND-ZEN-180-30-45/N3	£97.39
300 x 500	STAND-ZEN-180-30-50	£91.34	STAND-ZEN-180-30-50/N2	£94.76	STAND-ZEN-180-30-50/N3	£100.41
400 x 400	STAND-ZEN-180-40-40	£91.34	STAND-ZEN-180-40-40/N2	£94.76	STAND-ZEN-180-40-40/N3	£100.41
400 x 450	STAND-ZEN-180-40-45	£94.59	STAND-ZEN-180-40-45/N2	£98.71	STAND-ZEN-180-40-45/N3	£104.37

Locker Support Seats & Stands

- >> Colour coded solid grade laminate seat and aluminium framework form a bench seat in front of the locker allowing full access to the locker. All units come complete with adjustable levelling feet
- >> Overall height: 350mm



To Suit Locker Size W x D mm	Seat & Stand for Single Locker		Seat & Stand for Nest of 2 Lockers		Seat & Stand for Nest of 3 Lockers	
	Model	Price	Model	Price	Model	Price
300 x 400	SEAT-STAND-ZEN-180-30-40	£228.30	SEAT-STAND-ZEN-180-30-40/N2	£276.73	SEAT-STAND-ZEN-180-30-40/N3	£354.57
300 x 450	SEAT-STAND-ZEN-180-30-45	£228.30	SEAT-STAND-ZEN-180-30-45/N2	£276.73	SEAT-STAND-ZEN-180-30-45/N3	£354.57
300 x 500	SEAT-STAND-ZEN-180-30-50	£232.56	SEAT-STAND-ZEN-180-30-50/N2	£282.79	SEAT-STAND-ZEN-180-30-50/N3	£362.60
400 x 400	SEAT-STAND-ZEN-180-40-40	£232.56	SEAT-STAND-ZEN-180-40-40/N2	£282.79	SEAT-STAND-ZEN-180-40-40/N3	£362.60
400 x 450	SEAT-STAND-ZEN-180-40-45	£236.58	SEAT-STAND-ZEN-180-40-45/N2	£289.66	SEAT-STAND-ZEN-180-40-45/N3	£366.55

Dry Environment Locks



A



B



C



D



E



F

Item	Description	Model	Price
A	Radial Pin Lock - 10,000 Combinations	TYPEC	£20.96
B	Re-programmable Combination Lock	TYPEK-W	£44.93
C	NEW Re-programmable Combination Lock	TYPEP	£37.06
D	Digital Combination Lock - 40,000 Combinations	TYPEL	£97.68
E	The RFID Keyless Digital Combination Lock	TYPEM	£125.63
F	Dual Coin/Token Return Lock	TYPEMH-£1	£31.20

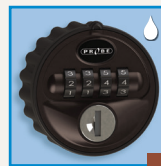
Wet Environment Locks



G



H



I



J



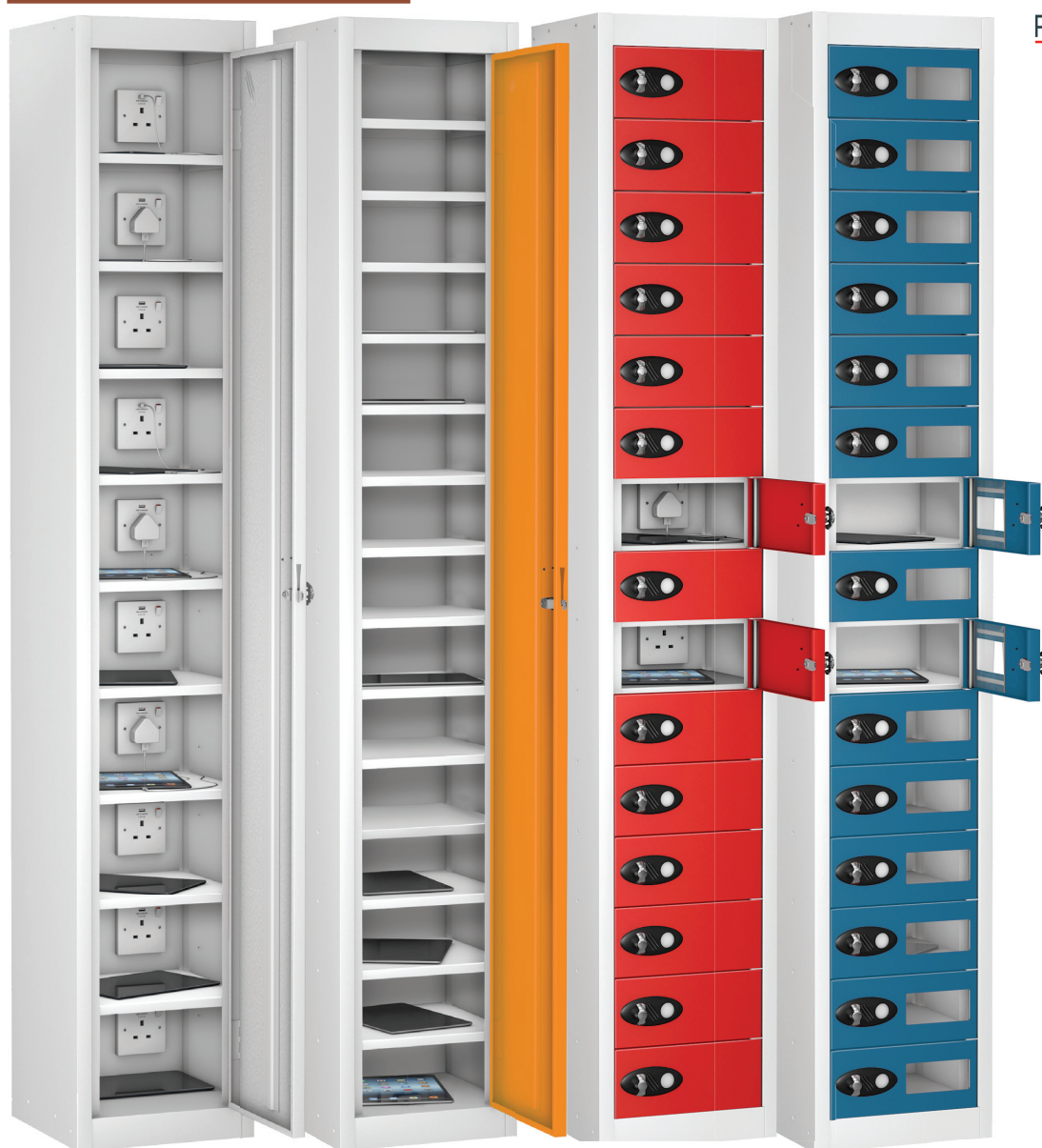
K



L

Item	Description	Model	Price
G	Probe Cam Lock	TYPE3	£21.83
H	Hasp and Staple	TYPE2	£12.31
I	NEW Re-programmable Combination Lock	TYPE11	£62.42
J	Digital Combination Lock - 40,000 Combinations	TYPE5	£44.93
K	The RFID Keyless Digital Combination Lock	TYPE10	£165.76
L	Dual Coin/Token Return Lock	TYPE7-£1	£68.15

TabBox Charge Lockers



TAB/701212/1/10/P/USB

TAB/701212/1/15/P/NONE

TAB/701212/15/15/P/PLUG

TAB/701212/15/15/V/NONE

PROBE^{FIRE}**ZERO**
EN 13501-1: 2007+A1: 2008



FROM ONLY
£284.12

DOOR COLOUR OPTIONS

- Orange (RAL2003)
 - Blue (RAL5019)
 - Red (BS04E53)
 - White (RAL9016)
- specify when ordering*

- » All available charging or non-charging/store
- » All charging units are CE marked and tested: BS 6396:2008*
- » Doors secured by a solid sturdy hinge
- » Lock covers allow for numbering on every door for easy identification
- » Robust and sturdy steel construction
- » A wide variety of locking solutions are available
- » Rear perforated panel for heat dissipation
- » Internal compartment size of 305 x 305mm



integral 2.1amp
USB socket available

Description	15 Door Compartment Locker		1 Door / 15 Compartment Locker		10 Door Compartment Locker	
	Model	Price	Model	Price	Model	Price
Plain Door Locker	TAB/701212/15/15/P/NONE	£397.24	TAB/701212/1/15/P/NONE	£379.35	TAB/701212/10/10/P/NONE	£354.02
Vision Door Locker	TAB/701212/15/15/V/NONE	£534.39	-	-	TAB/701212/10/10/V/NONE	£447.65
Plain Door Locker with 3 Pin Charge Point	TAB/701212/15/15/P/PLUG	£672.18	TAB/701212/1/15/P/PLUG	£647.92	TAB/701212/10/10/P/PLUG	£613.00
Vision Door Locker with 3 Pin Charge Point	TAB/701212/15/15/V/PLUG	£809.44	-	-	TAB/701212/10/10/V/PLUG	£704.94
Plain Door Locker with USB & 3 Pin Charge Point	TAB/701212/15/15/P/USB	£775.05	TAB/701212/1/15/P/USB	£749.79	TAB/701212/10/10/P/USB	£683.81
Vision Door Locker with USB & 3 Pin Charge Point	TAB/701212/15/15/V/USB	£860.26	-	-	TAB/701212/10/10/V/USB	£775.61

Description	1 Door / 10 Compartment Locker		8 Door Compartment Locker		1 Door / 8 Compartment Locker	
	Model	Price	Model	Price	Model	Price
Plain Door Locker	TAB/701212/1/10/P/NONE	£330.82	TAB/701212/8/8/P/NONE	£307.53	TAB/701212/1/8/P/NONE	£284.12
Vision Door Locker	-	-	TAB/701212/8/8/V/NONE	£381.13	-	-
Plain Door Locker with 3 Pin Charge Point	TAB/701212/1/10/P/PLUG	£585.95	TAB/701212/8/8/P/PLUG	£421.10	TAB/701212/1/8/P/PLUG	£378.56
Vision Door Locker with 3 Pin Charge Point	-	-	TAB/701212/8/8/V/PLUG	£494.54	-	-
Plain Door Locker with USB & 3 Pin Charge Point	TAB/701212/1/10/P/USB	£656.15	TAB/701212/8/8/P/USB	£476.47	TAB/701212/1/8/P/USB	£434.46
Vision Door Locker with USB & 3 Pin Charge Point	-	-	TAB/701212/8/8/V/USB	£550.32	-	-

Battery Charging Lockers

- » Suitable for the secure charging of batteries & power tools
- » CE tested & meets EU safety requirements
- » Fitted with galvanised security shelf to prevent any unauthorised access to the compartment below
- » Fitted with standard, mastered cam locks with 2,000 differs
- » Strengthened & ventilated doors with rubber buffers
- » Powder coated with Germ Guard Active Technology paint
- » Reaction to Fire Classification EN 13501-1

DOOR COLOUR OPTIONS

- Green
- Light Blue
- Dark Blue
- Red
- Yellow
- Light Grey

specify when ordering



FROM ONLY
£395.82



Perforated Door Charging Lockers with a Standard plug

Overall Size H x W x D mm	4 Tier		5 Tier		6 Tier		8 Tier	
	Model	Price	Model	Price	Model	Price	Model	Price
1800 x 300 x 450	BL1830454*PX	£395.82	BL1830455*PX	£465.69	BL1830456*PX	£523.02	BL1830458*PX	£627.80
1800 x 450 x 450	BL1845454*PX	£450.25	BL1845455*PX	£530.75	BL1845456*PX	£596.44	BL1845458*PX	£715.10

Perforated Door Charging Lockers with a RCD plug

Overall Size H x W x D mm	4 Tier		5 Tier		6 Tier		8 Tier	
	Model	Price	Model	Price	Model	Price	Model	Price
1800 x 300 x 450	BR1830454*PX	£553.80	BR1830455*PX	£663.17	BR1830456*PX	£759.99	BR1830458*PX	£943.76
1800 x 450 x 450	BR1845454*PX	£608.23	BR1845455*PX	£728.22	BR1845456*PX	£833.41	BR1845458*PX	£1031.06

Solid Door Charging Lockers with a Standard plug

Overall Size H x W x D mm	4 Tier		5 Tier		6 Tier		8 Tier	
	Model	Price	Model	Price	Model	Price	Model	Price
1800 x 300 x 450	BL1830454*SX	£395.82	BL1830455*SX	£465.69	BL1830456*SX	£523.02	BL1830458*SX	£627.80
1800 x 450 x 450	BL1845454*SX	£450.25	BL1845455*SX	£530.75	BL1845456*SX	£596.44	BL1845458*SX	£715.10

Solid Door Charging Lockers with a RCD plug

Overall Size H x W x D mm	4 Tier		5 Tier		6 Tier		8 Tier	
	Model	Price	Model	Price	Model	Price	Model	Price
1800 x 300 x 450	BR1830454*SX	£553.80	BR1830455*SX	£663.17	BR1830456*SX	£759.99	BR1830458*SX	£943.76
1800 x 450 x 450	BR1845454*SX	£608.23	BR1845455*SX	£728.22	BR1845456*SX	£833.41	BR1845458*SX	£1031.06

Economy Wall Cupboard

- >> Welded steel construction

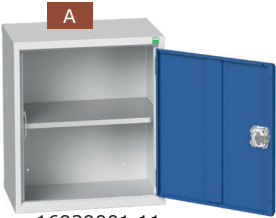
>> Three point locking, with re-inforced doors

>> Roller bearing 75mm high drawers with 10kg U.D.L. capacity
- >> Galvanised shelves adjustable on 100mm pitch

>> 35kg U.D.L capacity per shelf



16929101.11



16929001.11



16929003.11



16929103.11

PRICES
HELD

Item	Overall Size H x W x D mm	Shelves	No of Drawers	Model	Price
A	600 x 525 x 350	1	-	16929001.11	£110.74
B	600 x 525 x 350	2	1 x 75mm	16929003.11	£141.66

Item	Overall Size H x W x D mm	Shelves	No of Drawers	Model	Price
C	600 x 800 x 350	1	-	16929101.11	£147.96
D	600 x 800 x 350	2	1 x 75mm	16929103.11	£187.57

Laptop Cupboard

- >> Wall mounted secure storage
for laptops at point of use

>> Lockable fold down flap

>> Inner mat & fixing strap

PRICES
HELD



16912350.11V



16912350.11V

Overall Size H x W x D mm	Model	Price
410 x 500 x 150	16912350.11V	£160.89

Laptop & Tablet Storage Lockers

- » High quality & cost effective storage
- » Choice of 10 or 15 compartment units
- » Powder coated with Germ Guard active technology anti-bacterial paint
- » Pre-drilled for nesting
- » Reaction to Fire Classification EN 13501-1
- » Other colours available - *call for details*

Overall Size H x W x D mm	Configuration	Colour	Code	Price
1800 x 450 x 450	10 Comp 10 Doors	Light Grey	L7184545NLXX	£355.61
		Dark Blue	L7184545NBXX	£355.61
		Red	L7184545NRXX	£355.61
1800 x 380 x 450	15 Comp 15 Doors	Light Grey	L7183845QLXX	£399.87
		Dark Blue	L7183845QBXX	£399.87
		Red	L7183845QRXX	£399.87
	15 Comp 1 Door	Light Grey	L71838451LXX	£320.65
		Dark Blue	L71838451BXX	£320.65
		Red	L71838451RXX	£320.65



Charging Laptop & Tablet Lockers

- » Choice of 8 or 12 compartment units - each equipped with a 3 pin socket
- » Ventilated compartments for dissipation of heat during charge cycle
- » Compartment aperture: 100H x 375W x 470D mm
- » Powder coated with Germ Guard active technology anti-bacterial paint
- » Other colours available - *call for details*



Internal Charging Point fitted inside the compartments



Overall Size H x W x D mm	Configuration	Colour	Code	Price
1000 x 500 x 500	8 Comp 8 Doors	Light Grey	L7C10505088L	£534.36
		Dark Blue	L7C10505088B	£534.36
		Red	L7C10505088R	£534.36
	8 Comp 1 Door	Light Grey	L7C10505081L	£501.95
		Dark Blue	L7C10505081B	£501.95
		Red	L7C10505081R	£501.95
1460 x 500 x 500	12 Comp 1 Door	Light Grey	L7C145050W1L	£664.32
		Dark Blue	L7C145050W1B	£664.32
		Red	L7C145050W1R	£664.32
	12 Comp 12 Doors	Light Grey	L7C145050WWL	£699.86
		Dark Blue	L7C145050WWB	£699.86
		Red	L7C145050WWR	£699.86

Charging Laptop & Tablet Trolleys

- » Choice of 8 or 16 compartment units - each equipped with a 3 pin socket
- » Ventilated compartments for dissipation of heat during charge cycle
- » "Narrow Aisle" units are 525mm wide & allow easy access between desks
- » Compartment aperture: 100H x 375W x 465D mm
- » Powder coated with Germ Guard active technology anti-bacterial paint
- » Other colours available - *call for details*



Overall Size H x W x D mm	Configuration	Colour	Code	Price
Narrow Aisle 1200 x 525 x 675	8 Comp 2 Doors	Light Grey	L7M12526782L	£590.01
		Dark Blue	L7M12526782B	£590.01
		Red	L7M12526782R	£590.01
Narrow Aisle 1200 x 525 x 1220	16 Comp 4 Doors	Light Grey	L7M125212X4L	£1057.85
		Dark Blue	L7M125212X4B	£1057.85
		Red	L7M125212X4R	£1057.85
1200 x 1040 x 660	16 Comp 2 Doors	Light Grey	L7M121066X2L	£1057.85
		Dark Blue	L7M121066X2B	£1057.85
		Red	L7M121066X2R	£1057.85



Internal Charging Point fitted inside the compartments



Wire Mesh Lockers



- » Manufactured from 25 x 25 x 2.5 copper coated welded mesh on a 6mm rod frame
- » Bright electroplated zinc lockers which offer full through ventilation & high visual security
- » Single tier lockers come complete with a hat shelf & coat hook

- » Fitted with a hasp & staple for use with a padlock (*not included*)
- » Fitted with floor fixing brackets with provision to be fitted back to back, to the wall & to the floor (*fixings not included*)
- » **Premium 8mm lockers available - call for details**

Description	1980H x 305Dmm		1980H x 457Dmm	
	Model	Price	Model	Price
1 Door				
Single Locker - 300W	CM0002EC	£98.52	CM0014EC	£110.15
Nest of 2 Lockers - 610W	CM0004EC	£181.37	CM0016EC	£196.96
Nest of 3 Lockers - 910W	CM0006EC	£256.44	CM0018EC	£292.87
2 Door				
Single Locker - 300W	CM0020EC	£103.67	CM0032EC	£114.35
Nest of 2 Lockers - 610W	CM0022EC	£192.26	CM0034EC	£209.86
Nest of 3 Lockers - 910W	CM0024EC	£271.59	CM0036EC	£303.45
3 Door				
Single Locker - 300W	CM0038EC	£106.81	CM0050EC	£121.59
Nest of 2 Lockers - 610W	CM0040EC	£199.26	CM0052EC	£221.84
Nest of 3 Lockers - 910W	CM0042EC	£290.98	CM0054EC	£328.26

Description	1980H x 305Dmm		1980H x 457Dmm	
	Model	Price	Model	Price
4 Door				
Single Locker - 300W	CM0056EC	£112.70	CM0068EC	£127.78
Nest of 2 Lockers - 610W	CM0058EC	£213.62	CM0070EC	£242.80
Nest of 3 Lockers - 910W	CM0060EC	£310.98	CM0072EC	£347.79
5 Door				
Single Locker - 300W	CM0190EC	£121.23	CM0196EC	£137.32
Nest of 2 Lockers - 610W	CM0191EC	£227.24	CM0197EC	£255.60
Nest of 3 Lockers - 910W	CM0192EC	£337.85	CM0198EC	£384.94
6 Door				
Single Locker - 300W	CM0074EC	£127.27	CM0086EC	£143.20
Nest of 2 Lockers - 610W	CM0076EC	£244.30	CM0088EC	£274.58
Nest of 3 Lockers - 910W	CM0078EC	£362.73	CM0090EC	£404.62

Wire Mesh Compartment Lockers

- » Manufactured from 25 x 25 x 2.5 copper coated welded mesh on a 8mm rod frame
- » Bright electroplated zinc lockers which offer full through ventilation & high visual security
- » Fitted with a hasp & staple for use with a padlock (*not included*)
- » Fitted with floor fixing brackets with provision to be fitted back to back, to the wall & to the floor (*fixings not included*)

FROM ONLY
£122.12



COLOUR OPTIONS

- ☒ Blue
 - ☒ Red
 - ☒ Green
 - ☐ Light Grey
 - ☐ Dark Grey
 - ☐ Electro Zinc Plated
- specify when ordering*



Overall Size H x W x D mm	Compartment Lockers with No Doors			Compartment Lockers with Doors		
	No of Compartments	Model	Price	No of Doors / Compartments	Model	Price
1370 x 610 x 305	8	CM010BZP0129	£122.12	8 / 8	CM010BZP0130	£159.31
1370 x 610 x 457	8	CM010BZP0141	£161.99	8 / 8	CM010BZP0142	£196.75
1370 x 910 x 305	12	CM010BZP0145	£163.86	12 / 12	CM010BZP0146	£228.04
1370 x 910 x 457	12	CM010BZP0151	£184.95	12 / 12	CM010BZP0152	£250.58
1370 x 1210 x 305	16	CM010BZP0147	£215.48	16 / 16	CM010BZP0148	£301.81
1370 x 1210 x 457	16	CM010BZP0153	£231.58	16 / 16	CM010BZP0154	£317.90
1370 x 1510 x 305	20	CM010BZP0149	£241.39	20 / 20	CM010BZP0150	£350.80
1370 x 1510 x 457	20	CM010BZP0155	£266.12	20 / 20	CM010BZP0156	£381.28
1370 x 830 x 305	40	CM010BZP0157	£227.29	2 / 40	CM010BZP0158	£293.41
1370 x 830 x 457	40	CM010BZP0159	£258.38	2 / 40	CM010BZP0160	£323.54

Wire Mesh Compartment Cupboards

- » Manufactured from 25 x 25 x 2.5 copper coated welded mesh on a 8mm rod frame
- » Bright electroplated zinc lockers which offer full through ventilation & high visual security
- » Fitted with a hasp & staple for use with a padlock (*not included*)
- » Fitted with floor fixing brackets with provision to be fitted back to back, to the wall & to the floor (*fixings not included*)

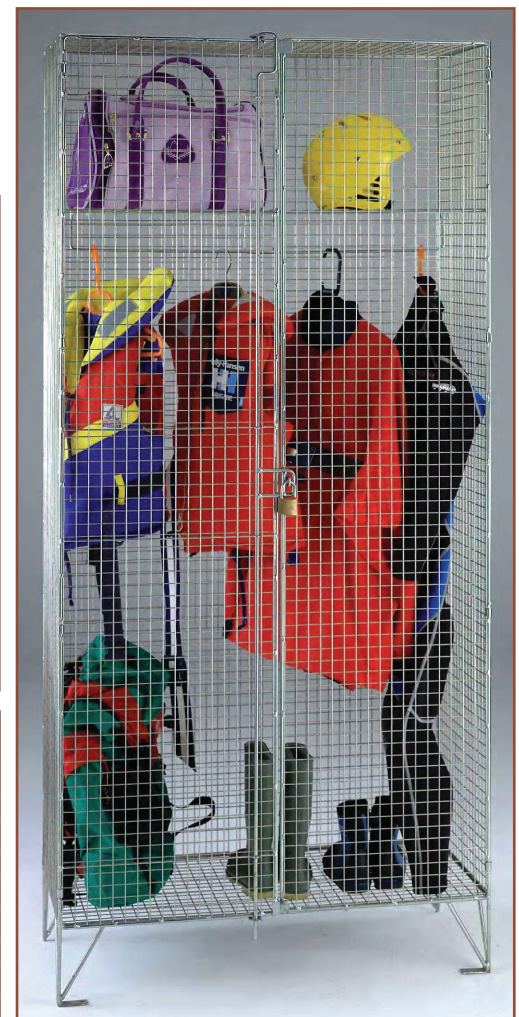


FROM ONLY
£119.63



COLOUR OPTIONS

- ☒ Blue
 - ☒ Red
 - ☒ Green
 - ☐ Light Grey
 - ☐ Dark Grey
 - ☐ Electro Zinc Plated
- specify when ordering*



Description	Overall Size H x W x D mm	Model	Price
Low Cupboard - Single Door (c/w 2 shelves)	1370 x 450 x 457	CM090BZP0401	£119.63
Low Cupboard - Double Door (c/w 2 shelves)	1370 x 910 x 457	CM090BZP0402	£214.39
Narrow Cupboard - Single Door (c/w 3 shelves)	1980 x 450 x 457	CM090BZP0403	£147.40
Cupboard - Double Door (c/w 3 shelves)	1980 x 910 x 457	CM090BZP0404	£316.62
Divided Cupboard - Double Door (c/w 6 shelves)	1980 x 910 x 457	CM090BZP0405	£294.40
Divided Cupboard - Double Door (c/w 9 shelves)	1980 x 910 x 457	CM090BZP0406	£327.16
Divided Cupboard - Double Door (c/w 12 shelves)	1980 x 910 x 457	CM090BZP0407	£344.76
Janitor Cupboard - Double Door (c/w Rail & 3 shelves)	1980 x 910 x 457	CM090BZP0408	£321.82
Wardrobe Cupboard - Double Door (c/w Hat Shelf & Rail)	1980 x 910 x 457	CM090BZP0409	£294.40

Wire Mesh Storage Compartments

- » Strong & hard wearing
- » Fully welded tubular steel construction with a 50 x 50mm square mesh outer carcass & 25 x 25mm mesh shelves
- » Fitted with hanging rail & 2 storage shelves per compartment as illustrated
- » Produced with both floor & wall fixing points (fixings not supplied)
- » Easy access for cleaning
- » Contents can easily be visually inspected

N.B. A Fork Lift will be needed to unload these units

i Information

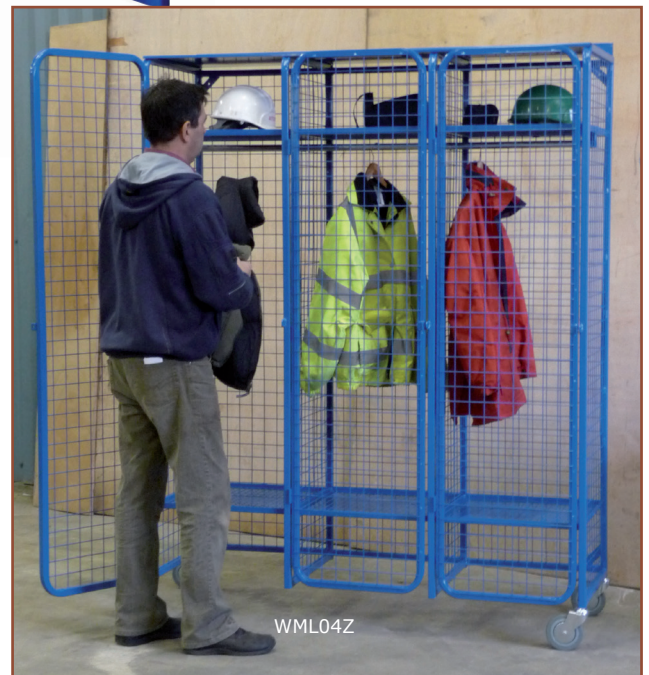
**BESPOKE MODELS
CAN BE MADE TO YOUR
SPECIFICATION
CALL FOR DETAILS**



WML01Z
Single sided



WML02Z
Double sided



WML04Z

No. of Compartments	Overall Size H x W x D mm	Weight kg	Model	Price
Wall Mounted Unit				
3	1890 x 1590 x 565	65	WML01Z	£857.00
Double Sided Unit				
6	1890 x 1590 x 1130	130	WML02Z	£1633.70
Mobile Unit with padlockable doors (<i>padlock not included</i>)				
3	2090 x 1590 x 565	105	WML04Z	£1339.20

Workplace Cupboards



FROM ONLY
£198.55

DOOR COLOUR OPTIONS

- Green
- Grey
- Blue
- Yellow
- Light Blue
- Red

specify when ordering



**SCQ090946 &
SCQ180946 ARE ON
5 DAY DELIVERY
IN BLUE &
GREY ONLY**

- » Strong construction provides all round robustness
- » 'No snag' handles with 2-point locking
- » Strengthened doors
- » Grey powder coated carcass
- » Powder coated with Germ Guard active technology anti-bacterial paint
- » Wall cupboard is pre-drilled for mounting (fixings not supplied)
- » Shelf capacities: 70kg evenly distributed
- » Reaction to Fire Classification EN 13501-1

Static Cupboards

Overall Size H x W x D mm	No of Shelves	Cupboard		Extra Shelf	
		Model	Price	Model	Price
900 x 460 x 460	1	SCQ094646	£198.55	SCQ0446ES	£27.35
900 x 900 x 460	2	SCQ090946	£248.55	SCQ0946ES	£35.55
900 x 900 x 610	2	SCQ090961	£308.40	SCQ0961ES	£32.05
1200 x 900 x 460	2	SCQ120946	£307.10	SCQ0946ES	£35.55
1800 x 600 x 460	3	SCQ180646	£304.40	SCQ0646ES	£20.05
1800 x 900 x 460	3	SCQ180946	£336.10	SCQ0946ES	£35.55
1800 x 900 x 610	3	SCQ180961	£448.55	SCQ0961ES	£32.05
1800 x 1200 x 460	3	SCQ181246	£444.65	SCQ1246ES	£41.00
1800 x 1200 x 610	3	SCQ181261	£535.30	SCQ1261ES	£46.75

Mobile Cupboards

Overall Size H x W x D mm	No of Shelves	Cupboard		Extra Shelf	
		Model	Price	Model	Price
1040 x 900 x 460	2	MCQ10946	£359.15	MCQ0946ES	£35.55
1040 x 900 x 610	2	MCQ10961	£503.25	MCQ0961ES	£32.05

Wall Cupboard

Overall Size H x W x D mm	No of Shelves	Cupboard		Extra Shelf	
		Model	Price	Model	Price
570 x 850 x 255	1	WCQ57825	£188.75	-	-

Lockers, Cupboards & Cloakroom

Perforated Door Cupboards



'No snag' handles with 2-point locking



Door Locking Mechanism

FROM ONLY
£298.75

PDC090946

- » The perforated doors allows view of contents for greater visual security
- » 'No snag' handles with 2-point locking
- » Powder coated light grey carcass with a variety of door colours
- » Adjustable shelves
- » Reaction to Fire Classification EN 13501-1

Germ Guard
Active Technology



DOOR COLOUR OPTIONS

- Green
- Grey
- Blue
- Yellow
- Light Blue
- Red

specify when ordering

PDC180946

Overall Size H x W x D mm	No of Shelves	Cupboard		Extra Shelf	
		Model	Price	Model	Price
900 x 900 x 460	2	PDC090946	£298.75	PDC0946ES	£35.55
900 x 900 x 610	2	PDC090961	£358.60	PDC0961ES	£32.05
1200 x 900 x 460	2	PDC120946	£357.25	PDC0946ES	£35.55
1800 x 600 x 460	3	PDC180646	£354.60	PDC0646ES	£20.05
1800 x 900 x 460	3	PDC180946	£373.75	PDC0946ES	£35.55
1800 x 900 x 610	3	PDC180961	£498.15	PDC0961ES	£32.05
1800 x 1200 x 460	3	PDC181246	£494.80	PDC1246ES	£41.00
1800 x 1200 x 610	3	PDC181261	£585.50	PDC1261ES	£46.75

Vision Door Cupboards

These cupboards and cabinets bring a combination of storage, mobility, security and a touch of style to the workplace. The perspex doors allow managers and supervisors to be able to see the contents of cupboards whilst the cupboard is locked.

- » Flush "no snag" handles
- » Mobile and static options
- » Strengthened doors
- » Adjustable shelves
- » Secure locks
- » Tough powder coated finish
- » Cupboard shelves have a UDL of 70kg



Germ Guard
Active Technology



DOOR COLOUR OPTIONS

- Green
- Grey
- Blue
- Yellow
- Light Blue
- Red

specify when ordering

Overall Size H x W x D mm	No of Shelves	Cupboard		Extra Shelf	
		Model	Price	Model	Price
700 x 350 x 300	2	VDOR073530	£235.30	-	-
700 x 900 x 450	2	VDOR079045	£359.95	VDOR0945ES	£35.55
900 x 460 x 450	2	VDOR094645	£273.40	VDOR0445ES	£27.35
900 x 900 x 450	2	VDOR099045	£418.30	VDOR0945ES	£35.55
1200 x 900 x 450	2	VDOR129045	£482.50	VDOR0945ES	£35.55
1800 x 900 x 450	3	VDOR189045	£583.50	VDOR0945ES	£35.55
1800 x 1200 x 450	3	VDOR181245	£664.25	VDOR1245ES	£41.00

FACS189046



FACS094646



FACS099046



FACS073530

FACS079046

First Aid Cupboards

- » Strong construction provides all round robustness
- » 'No snag' handles with 2-point locking
- » Adjustable spill-retaining galvanised shelves for superior spill management. Integral liquid-tight sump encourages the correct handling of spills through the use of absorbents (except the Wall Cupboard)
- » White powder coated finish with identification symbol signs/labels
- » Powder coated with Germ Guard Active Technology anti-bacterial paint
- » Wall cupboards are pre-drilled for mounting (fixings not supplied)
- » Stands raise cupboards by 500mm & they incorporate an adjustable foot for uneven surfaces
- » Reaction to Fire Classification EN 13501-1



FACW578525

Static Cupboards

Overall Size H x W x D mm	No of Shelves	Model	Price
700 x 350 x 300	1	FACS073530	£163.45
700 x 900 x 460	1	FACS079046	£228.55
900 x 460 x 460	1	FACS094646	£194.05
900 x 900 x 460	1	FACS099046	£248.55
1800 x 900 x 460	3	FACS189046	£376.05

Mobile Cupboards

Overall Size H x W x D mm	No of Shelves	Model	Price
840 x 900 x 460	1	FACM089046	£369.75
1040 x 900 x 460	1	FACM109046	£374.65

Wall Cupboards

Overall Size H x W x D mm	No of Shelves	Model	Price
570 x 850 x 255	1	FACW578525	£216.30

Extra Shelves

To Fit W x D mm	Model	Price
350 x 300	FACES3530	£21.90
460 x 460	FACES4646	£27.35
900 x 460	FACES9046	£35.55

Stands (height of 543mm)

To Fit W x D mm	Model	Price
350 x 300	FACST3530	£94.90
460 x 460	FACST4646	£98.90
900 x 460	FACST9046	£114.90

Stainless Steel Cupboards & Floor Chests

- » Ideal for food, pharmaceutical & medical environments - especially where damp is a factor
- » 'No snag' handles with 2-point locking
- » Adjustable stainless steel shelves
- » Corrosion resistant

- » Floor chests have riveted structure with angled lid to discourage article placement. Fitted with a hasp & staple lock - padlock not supplied



STSC180946



STSC090946



STFC050603

STFC061104

Floor Chests

Overall Size H x W x D mm	Model	Price
510 x 610 x 340	STFC050603	£805.80
610 x 1170 x 460	STFC061104	£1076.00

Static Cupboards

Overall Size H x W x D mm	No of Shelves	Model	Price
900 x 460 x 460	1	STSC090446	£608.65
900 x 900 x 460	1	STSC090946	£767.95
1200 x 900 x 460	2	STSC120946	£929.85
1800 x 900 x 460	3	STSC180946	£1169.05
1800 x 1200 x 460	3	STSC181246	£1532.90

Extra Shelves

To Fit W x D mm	Model	Price
900 x 460	STSC0946ES	£99.15
1200 x 460	STSC1246ES	£112.40

Utility Cupboards

- » Made from robust, high quality plastic
- » Ideal for many applications; kitchens/cafeterias, janitorial closets, schools, offices etc
- » Anti-wear steel hinges that provide a snap closure
- » Hygienic - easy to clean



CLD1634



CLD163U

FROM ONLY
£87.10



CLD163T

Information

**IDEAL FOR MANY APPLICATIONS;
KITCHENS,
CAFETERIAS,
SCHOOLS,
OFFICES ETC**



CLD084D



CLT084T

Doors	Features	Overall Size H x W x D mm	Weight kg	Model	Price
Compact Cupboard					
Double	1 Shelf	840 x 680 x 370	9	CLD084D	£87.10
Triple		840 x 1020 x 370	14.5	CLT084T	£130.15
Large Cupboard					
Double	3 Shelves	1630 x 680 x 370	17	CLD1634	£144.70
Triple		1630 x 1020 x 370	22	CLD163T	£206.85
Utility Cupboard					
Double	3 Half Shelves	1630 x 680 x 370	17	CLD163U	£145.50

Clothing Cupboards

- » "No Snag" handles with 2-point locking
- » Strengthened doors
- » Top shelf & hanging garment rail
- » Reaction to Fire Classification EN 13501-1

COLOUR OPTIONS

- ☐ Light Grey
- ☒ Light Blue
- ☐ Dark Blue
- ☐ Green
- ☐ Red
- ☐ Yellow

Germ Guard
Active Technology



Overall Size H x W x D mm	No of Shelves	Model	Price
1800 x 600 x 450	1	CC180645Z	£343.60
1800 x 900 x 450	1	CC180945Z	£364.85
1800 x 1200 x 450	1	CC181245Z	£455.15

Extra Shelves

To Fit W x D mm	Model	Price
600 x 450	CC0645ES	£22.70
900 x 450	CC0945ES	£28.05
1200 x 450	CC1245ES	£36.05

Utility Cupboards

- » "No Snag" handles with 2-point locking
- » Strengthened doors
- » Central divider with removable rail on one side & 3 adjustable shelves on the other
- » Reaction to Fire Classification EN 13501-1

COLOUR OPTIONS

- ☐ Light Grey
- ☒ Light Blue
- ☐ Dark Blue
- ☐ Green
- ☐ Red
- ☐ Yellow

Germ Guard
Active Technology



Overall Size H x W x D mm	No of Shelves	Model	Price
1800 x 900 x 450	3	UCU180945Z	£382.10
1800 x 1200 x 450	3	UCU181245Z	£503.00

Extra Shelves

To Fit W x D mm	Model	Price
900 x 450	UCU0945ES	£21.35
1200 x 450	UCU1245ES	£22.70



Plastic Cloakroom Equipment

- » Moisture resistant heavy duty plastic that will never rust, rot or corrode
- » Constructed from plastic & aluminium
- » Benches are fully demountable for storage
- » Can be fixed to the floor or supplied with adjustable feet - call for details
- » Can be supplied with standard or theft-proof hangers - call for details

LOWER PRICES

Double Coat Bench shown with 10 Hooks



COLOUR OPTIONS

- Beige
- Red
- Blue
- Grey

specify when ordering



B1840S



C1240S

Single Standard Bench O/H 450mm

Size L x D mm	Model	Price
1000 x 400	B1040S	£98.40
1200 x 400	B1240S	£119.20
1500 x 400	B1540S	£148.53
1800 x 400	B1840S	£179.20
2000 x 400	B2040S	£199.20

Double Standard Bench O/H 450mm

Size L x D mm	Model	Price
1000 x 800	B1080D	£205.64
1200 x 800	B1280D	£225.67
1500 x 800	B1580D	£301.13
1800 x 800	B1880D	£315.31
2000 x 800	B2080D	£345.61

Single Coat Bench O/H 1800mm

Size L x D mm	No of Hooks	Model	Price
1000 x 400	6	C1040S	£169.87
1200 x 400	7	C1240S	£179.20
1500 x 400	9	C1540S	£249.87
1800 x 400	11	C1840S	£279.20
2000 x 400	12	C2040S	£299.20

Double Coat Bench O/H 1800mm

Size L x D mm	No of Hooks	Model	Price
1000 x 800	12	C1080D	£339.20
1200 x 800	14	C1280D	£369.87
1500 x 800	18	C1580D	£449.87
1800 x 800	22	C1880D	£499.20
2000 x 800	24	C2080D	£529.87

Wall Rack

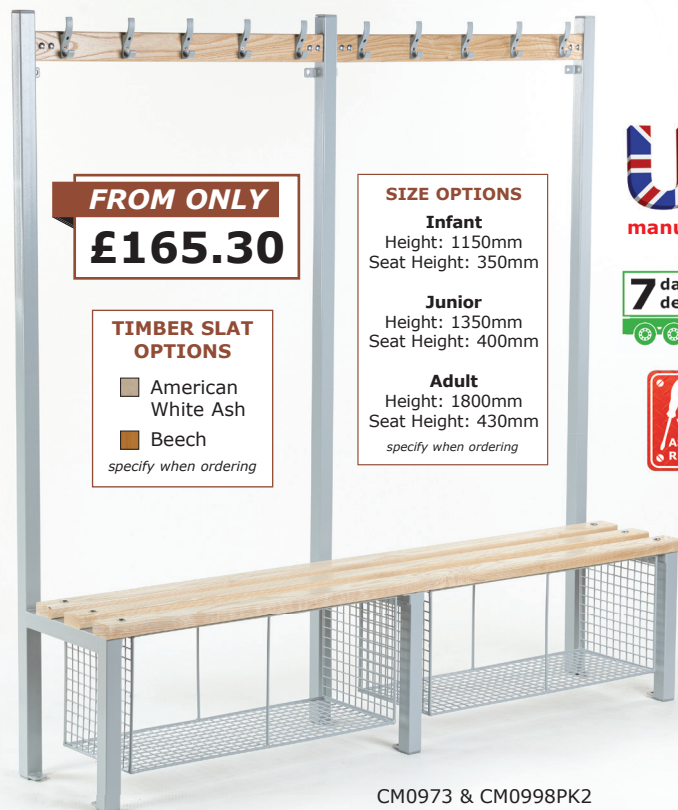
- » Available in matching colours



Length mm	Depth mm	No of Hooks	Model	Price
1000	40	6	WR1000	£39.73
1200	40	7	WR1200	£49.87
1500	40	9	WR1500	£59.20
1800	40	11	WR1800	£69.60
2000	40	12	WR2000	£79.73

Cloakroom Equipment

- » Triple lacquered 70 x 32mm hardwood timber slats with radiused edges fitted to a steel seat support frame
- » Frames come complete with floor fixing brackets on each leg
- » Durable grey plastic coated frame doesn't chip whilst giving a softer & more durable finish - alternative colours are available in a powder coated finish - please call for details
- » Virtually unbreakable 'toughhooks' in mid-grey. Other colours available - call for details



CM0973 & CM0998PK2



CM0977 & 2 x CM1000

Single Sided Cloakroom Units

Length mm	Depth mm	No of Hooks	Leg Sets	Single Sided Bench	
				Model	Price
1000	400	5	2	CM0970	£165.30
1200	400	6	2	CM0971	£178.35
1500	400	8	2	CM0972	£210.25
1800	400	10	3	CM0973	£263.90

Double Sided Cloakroom Units

Length mm	Depth mm	No of Hooks	Leg Sets	Double Sided Bench	
				Model	Price
1000	760	10	2	CM0975	£275.50
1200	760	12	2	CM0976	£294.35
1500	760	16	2	CM0977	£333.50
1800	760	20	3	CM0978	£404.55

Cloakroom Bench

- » Triple lacquered 70 x 32mm hardwood timber slats
- » Durable grey plastic coated frame doesn't chip whilst giving a softer & more durable finish
- » Complete with floor fixing brackets on each leg



CM0966

Shoe Baskets/Shoe Shelves to suit Bench/Cloakroom

- » Grey LDPE dip plastic coated baskets which can be fitted to either the Cloakroom units above or the Cloakroom Benches shown to the left



CM0966 & CM1002SB8

Length mm	Leg Sets	300mm Deep Bench		400mm Deep Bench	
		Model	Price	Model	Price
1000	2	CM0966	£102.95	CM0966XL	£117.45
1200	2	CM0967	£111.65	CM0967XL	£129.05
1500	2	CM0968	£124.70	CM0968XL	£143.55
1800	3	CM0969	£159.50	CM0969XL	£184.15

To Suit Length mm	Shoe Baskets to Suit Bench/Cloakroom			Shoe Shelves to Suit Bench/Cloakroom	
	Model	Compartments	Price	Model	Price
1000	CM1001SB6	6	£68.49	CM0998	£53.91
1200	CM1002SB8	8	£81.60	CM0999	£58.29
1500	CM1003SB10	10	£109.29	CM1000	£67.03
1800	CM1001SB6PK2	12	£136.97	CM0998PK2	£107.83

ECO Cloakroom Equipment

- >> 100% recycled 100 x 30mm plastic slats
- >> Frames come complete with floor fixing brackets on each leg
- >> Durable grey plastic coated frame doesn't chip whilst giving a softer & more durable finish - alternative colours are available in a powder coated finish please call for details
- >> Virtually unbreakable 'toughhooks' in mid-grey. Other colours available - call for details

FROM ONLY
£166.76

NEW



Information

**VIRTUALLY
UNBREAKABLE
'TOUGHHOOKS'**

Information

**FRAMES WITH
PLASTIC COATING,
GIVES A SOFTER
& MORE DURABLE
FINISH**

CM0976ECO &
2 x ECO1200BASKET

Single Sided Cloakroom Units

Length mm	Depth mm	No of Hooks	Leg Sets	Single Sided Bench	
				Model	Price
1000	400	5	3	CM0970ECO	£166.76
1200	400	6	3	CM0971ECO	£179.80
1500	400	8	4	CM0972ECO	£211.70
1800	400	10	5	CM0973ECO	£278.40

Double Sided Cloakroom Units

Length mm	Depth mm	No of Hooks	Leg Sets	Double Sided Bench	
				Model	Price
1000	760	10	3	CM0975ECO	£278.40
1200	760	12	3	CM0976ECO	£297.26
1500	760	16	4	CM0977ECO	£336.40
1800	760	20	5	CM0978ECO	£419.06

Cloakroom Bench

- >> 100% recycled 100 x 30mm plastic slats
- >> Frames come complete with floor fixing brackets on each leg
- >> Durable grey plastic coated frame doesn't chip whilst giving a softer & more durable finish



CM0966ECO



Shoe Baskets/Shoe Shelves to suit ECO Bench/Cloakroom

- >> Grey LDPE dip plastic coated baskets which can be fitted to either the Cloakroom units above or the Cloakroom Benches shown to the left



CM0969ECO &
ECO1800BASKET



Length mm	Depth mm	Leg Sets	Model	Price
1000	325	3	CM0966ECO	£103.46
1200		3	CM0967ECO	£113.66
1500		4	CM0968ECO	£123.86
1800		5	CM0969ECO	£163.20

To Suit Length mm	Shoe Baskets to Suit ECO Bench/Cloakroom			Shoe Shelves to Suit ECO Bench/Cloakroom	
	Model	Compartments	Price	Model	Price
1000	ECO1000BASKET	8	£81.60	ECO1000SHELF	£53.91
1200	ECO1200BASKET	8	£85.97	ECO1200SHELF	£58.29
1500	ECO1500BASKET	12	£122.40	ECO1500SHELF	£81.60
1800	ECO1800BASKET	12	£129.69	ECO1800SHELF	£87.43

Cloakroom Equipment

- » Manufactured from 304 grade stainless steel with 40mm square legs
- » Sturdy aluminium or stainless steel coat hooks
- » Seat height: 450mm
- » Laminate seats are available in blue or light grey - please specify when ordering
- » Floor fixings, shoe racks, 316 marine grade finish & mono benches are available - call for details
- » Aqua solo benches are most suitable as a perimeter bench. Floor fixing cleats are available for added stability



STD15X in Blue



ASTS15X

Aqua Solo Benches - Stainless Steel Slats & Hooks

Length mm	Depth mm	No of Hooks	Leg Sets	Single Sided Bench	
				Model	Price
1000	400	5	2	ASTS10X	£566.43
1500	400	7	2	ASTS15X	£661.14
2000	400	10	2	ASTS20X	£752.14
2500	400	12	3	ASTS25X	£1032.57
3000	400	14	3	ASTS30X	£1125.43

Aqua Solo Benches - Laminate Seats & SAA Hooks

Length mm	Depth mm	No of Hooks	Leg Sets	Single Sided Bench	
				Model	Price
1000	400	5	2	STS10X	£614.71
1500	400	7	2	STS15X	£755.86
2000	400	10	2	STS20X	£928.57
2500	400	12	3	STS25X	£1229.43
3000	400	14	3	STS30X	£1359.43

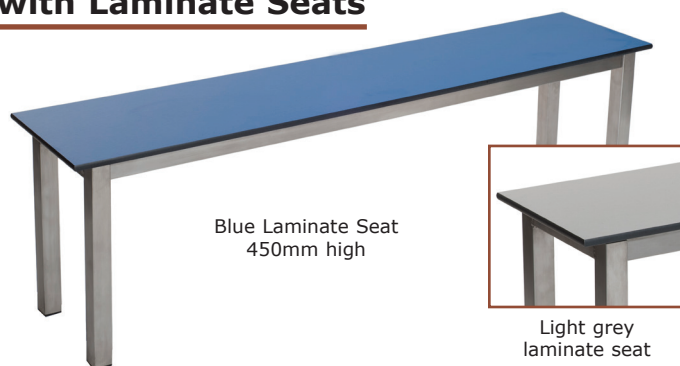
Aqua Duo Benches - Stainless Steel Slats & Hooks

Length mm	Depth mm	No of Hooks	Leg Sets	Double Sided Bench	
				Model	Price
1000	800	10	2	ASTD10X	£839.43
1500	800	14	2	ASTD15X	£1019.57
2000	800	20	2	ASTD20X	£1181.14
2500	800	24	3	ASTD25X	£1606.43
3000	800	28	3	ASTD30X	£1769.86

Aqua Duo Benches - Laminate Seats & SAA Hooks

Length mm	Depth mm	No of Hooks	Leg Sets	Double Sided Bench	
				Model	Price
1000	800	10	2	STD10X	£936.00
1500	800	14	2	STD15X	£1207.14
2000	800	20	2	STD20X	£1420.71
2500	800	24	3	STD25X	£1951.86
3000	800	28	3	STD30X	£2243.43

Aqua Mezzo Stainless Steel Benches with Laminate Seats



Blue Laminate Seat
450mm high



Light grey
laminate seat

Aqua Mezzo Stainless Steel Benches with Stainless Steel Slats



Stainless Steel Slats
450mm high

Length mm	Depth mm	Legs Sets	Basic Bench	
			Model	Price
1000	325	2	ST10	£384.43
1500	325	2	ST15	£484.71
2000	325	2	ST20	£585.00
2500	325	3	ST25	£804.14
3000	325	3	ST30	£924.86

Length mm	Depth mm	Legs Sets	Basic Bench	
			Model	Price
1000	325	2	AST10	£360.29
1500	325	2	AST15	£425.29
2000	325	2	AST20	£492.14
2500	325	3	AST25	£694.57
3000	325	3	AST30	£761.43

Cloakroom Equipment



DS24

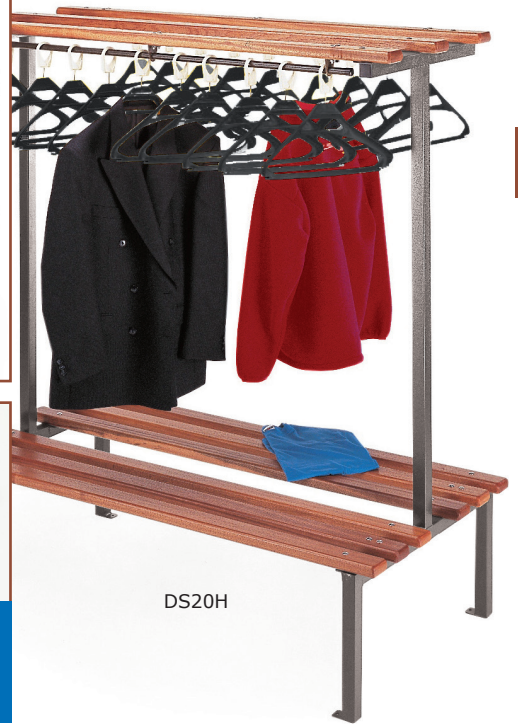


SS12

SS10H



**SUPPLIED WITH
UNBREAKABLE
PLASTIC HOOKS**



DS20H

Frames available in: Black, Grey & Blue
Hooks available in: Claret Red, Bottle Green, Teal, Yellow, Black, Grey, Bright Green, Bright Red & Bright Blue

- » Single or double sided
- » With hooks or hangers
- » Shoe baskets are available as an optional extra
- » Bespoke units available - call for details

- » Beech or sapele timber slats
- » Single sided units: 400mm wide
- » Double sided units: 762mm wide
- » All units are 1803mm high



Manufactured from 38 x 38mm RHS steel frame work. Tops & seat slats are of 70 x 32mm timber, with four radiused corners, & have been sanded, sealed & polished with a tough, hardwearing lacquer.

Complete with Unbreakable Hooks

Length mm	Single Sided			Double Sided		
	No of Hooks	Model	Price	No of Hooks	Model	Price
900	6	SS6	£240.00	12	DS12	£315.00
1200	9	SS9	£270.00	18	DS18	£355.00
1500	12	SS12	£295.00	24	DS24	£395.00

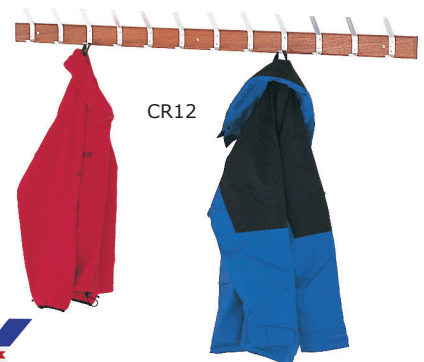
Complete with Black Hangers

Length mm	Single Sided			Double Sided		
	No of Hooks	Model	Price	No of Hooks	Model	Price
900	6	SS6H	£285.00	12	DS12H	£425.00
1200	8	SS8H	£325.00	16	DS16H	£475.00
1500	10	SS10H	£355.00	20	DS20H	£540.00

Bench Seats & Coat Rails

- » Benches have timber slats with four radiused corners which have been sanded, sealed & polished
- » Coat rails are pre-drilled ready for wall mounting

Length mm	Benches 400H x 300W mm		Coat Rails 70 x 20mm Timber	
	Model	Price	Model	Price
900	B36	£125.00	CR6	£50.00
1200	B48	£135.00	CR9	£55.00
1500	B60	£145.00	CR12	£60.00



CR12

Shoe Baskets

- » Strong wire mesh baskets
- » Available to suit all lengths of bench
- » Bespoke units available - call for details

No of Sections	Model	Price
1	SB1	£100.00
5	SB5	£115.00
10	SB10	£125.00



SB1, SB5 & SB10



B60

Garment Rails



- » Epoxy powder coated black
- » Welded tubular steel construction
- » Mobile models are mounted on 4 x 50mm PVC swivel castors

Single Bar

Overall Size L x W x H mm	Static		Mobile	
	Model	Price	Model	Price
1200 x 490 x 1800	GSG14Z	£189.45	GSG14Y	£198.00
1800 x 490 x 1800	GSG16Z	£207.75	GSG16Y	£216.70

Double Bar

Overall Size L x W x H mm	Static		Mobile	
	Model	Price	Model	Price
1200 x 490 x 1800	GSG24Z	£215.05	GSG24Y	£223.85
1800 x 490 x 1800	GSG26Z	£236.70	GSG26Y	£241.95

Nesting Frame Garment Rail



- » 'Z' frame rails constructed from welded tubular steel
- » Mobile on 50mm PVC castors

Overall Size L x W x H mm	Rail Height mm	Model	Price
1220 x 490 x 1800	1770	GSG34N	£227.85
1800 x 490 x 1800	1770	GSG36N	£246.35

Heavy Duty Garment Rail



- » Welded tubular steel construction
- » Mobile on 125mm rubber castors



Overall Size L x W x H mm	Rail Height mm	Handle Height mm	Model	Price
1200 x 500 x 1930	1920	1030	GSG44R	£484.70
1800 x 500 x 1930	1920	1030	GSG46R	£520.60

Coat Stands



Description	Overall Size L x W x H mm	Model	Price
6 Coat Hooks	450 x 450 x 1760	CSW15Z	£104.10
Umbrella Stand	260 x 260 x 460	CSW16Z	£30.65
6 Coat Hangers & Umbrella Holder	380 x 380 x 1750	CSW14Z	£145.75

Hat/Shoe Racks

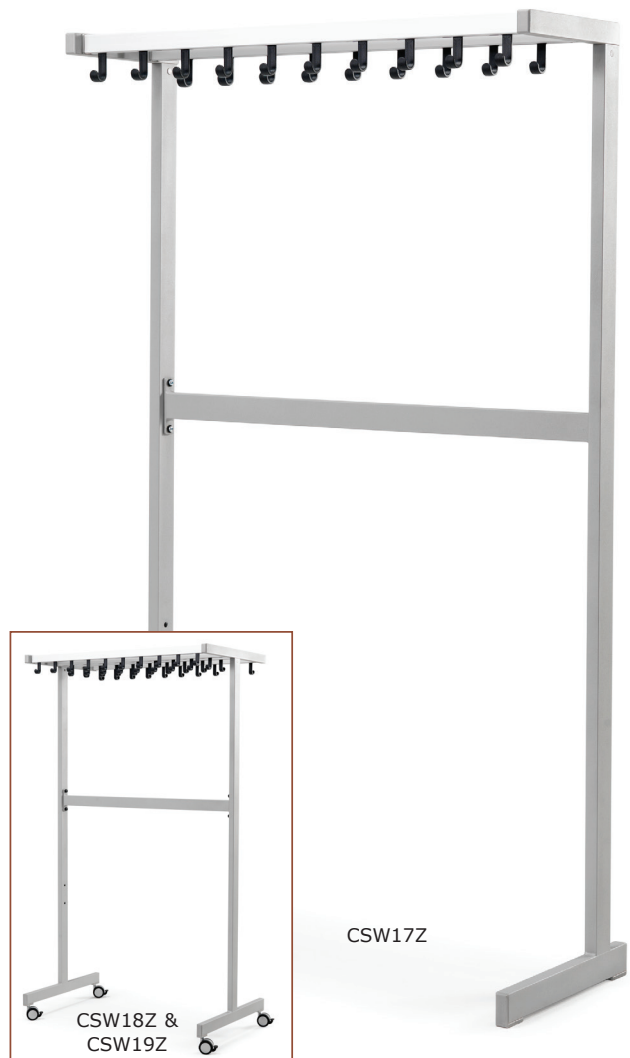
» Can be used as a hat or shoe rack



FROM ONLY
£116.35

Description	Overall Size L x W x H mm	Model	Price
Oak/Aluminium - c/w 3 Hooks	1000 x 245 x 190	CSW20Z	£116.35
Aluminium/Aluminium - c/w 3 Hooks	1000 x 245 x 190	CSW21Z	£116.35

Premium Coat Racks



Description	Overall Size W x D x H mm	Model	Price
Single Sided Coat Rack - 19 Coat Hooks	1000 x 410 x 1700	CSW17Z	£410.25
Double Sided Coat Rack - 38 Coat Hooks	1000 x 600 x 1700	CSW18Z	£598.80
Set of 4 wheels - Suits both units	-	CSW19Z	£55.15

Coat Racks



FROM ONLY
£21.45

NEW

Description	Overall Size L x W x H mm	Model	Price
Coat Rack - 6 Coat Hooks	600 x 65 x 130	CRW11Z	£21.45
Coat Rack - 4 Coat Hooks	360 x 60 x 52	CRW12Z	£36.20
Coat Rack - 5 Coat Hooks	480 x 120 x 130	CRW13Z	£50.25
Coat Rack - 6 Coat Hooks & Hat Shelf	800 x 300 x 240	CRW15Z	£79.60