

Workbenches & Drawer Cabinets

Rivet Workbenches



Full Undershelf Workbench



T Bar Workbench



Half Undershelf Workbench

» No nuts & bolts required - the system simply taps together with the use of a hammer/mallet

COLOUR OPTIONS

- Blue & Grey
 - Blue & Orange
- specify when ordering



Chipboard Worktop



MFC Worktop

Information

TAKES LESS THAN 10 MINUTES TO BUILD!

Overall Size H x W x D mm	Bench Load kg	Shelf Load kg	Chipboard Top		MFC Top	
			Model	Price	Model	Price
Full Undershelf Workbench						
915 x 915 x 762	600	400	RRWB/09/09/07	£125.87	RRWB/09/09/07/M	£163.60
915 x 915 x 915	600	400	RRWB/09/09/09	£139.76	RRWB/09/09/09/M	£181.73
915 x 1220 x 762	600	400	RRWB/09/12/07	£144.97	RRWB/09/12/07/M	£188.42
915 x 1220 x 915	600	400	RRWB/09/12/09	£160.49	RRWB/09/12/09/M	£208.64
915 x 1525 x 762	600	400	RRWB/09/15/07	£160.09	RRWB/09/15/07/M	£208.19
915 x 1525 x 915	600	400	RRWB/09/15/09	£177.99	RRWB/09/15/09/M	£231.42
915 x 1830 x 762	600	400	RRWB/09/18/07	£194.65	RRWB/09/18/07/M	£252.95
915 x 1830 x 915	600	400	RRWB/09/18/09	£215.22	RRWB/09/18/09/M	£279.74
915 x 2135 x 762	600	400	RRWB/09/21/07	£214.08	RRWB/09/21/07/M	£278.27
915 x 2135 x 915	600	400	RRWB/09/21/09	£236.35	RRWB/09/21/09/M	£307.21
915 x 2440 x 762	600	400	RRWB/09/24/07	£239.46	RRWB/09/24/07/M	£311.29
915 x 2440 x 915	600	400	RRWB/09/24/09	£265.07	RRWB/09/24/09/M	£344.60
Half Undershelf Workbench						
915 x 915 x 915	600	400	RRWBH/09/09/09	£128.14	RRWBH/09/09/09/M	£166.61
915 x 1220 x 915	600	400	RRWBH/09/12/09	£146.32	RRWBH/09/12/09/M	£190.23
915 x 1830 x 915	600	400	RRWBH/09/18/09	£192.05	RRWBH/09/18/09/M	£249.66
915 x 2440 x 915	600	400	RRWBH/09/24/09	£226.20	RRWBH/09/24/09/M	£294.07
T Bar Workbench						
915 x 915 x 762	600	-	RRWBT/09/09/07	£108.54	RRWBT/09/09/07/M	£141.06
915 x 915 x 915	600	-	RRWBT/09/09/09	£119.87	RRWBT/09/09/09/M	£155.85
915 x 1220 x 762	600	-	RRWBT/09/12/07	£117.67	RRWBT/09/12/07/M	£152.96
915 x 1220 x 915	600	-	RRWBT/09/12/09	£129.45	RRWBT/09/12/09/M	£168.31
915 x 1830 x 762	600	-	RRWBT/09/18/07	£147.06	RRWBT/09/18/07/M	£191.19
915 x 1830 x 915	600	-	RRWBT/09/18/09	£161.39	RRWBT/09/18/09/M	£209.84
915 x 2440 x 762	600	-	RRWBT/09/24/07	£169.32	RRWBT/09/24/07/M	£220.14
915 x 2440 x 915	600	-	RRWBT/09/24/09	£185.47	RRWBT/09/24/09/M	£241.04

Rivet Workstations

- >> No nuts & bolts required - the system simply taps together with the use of a hammer/mallet

COLOUR OPTIONS

-  Blue & Grey
 -  Blue & Orange
- specify when ordering



Allow 10 days for the MFC Top



Chipboard Worktop



MFC Worktop



Full Undershelf Workstation



T Bar Workstation



Half Undershelf Workstation

Information

TAKES LESS THAN 10 MINUTES TO BUILD!

Overall Size H x W x D mm	Bench Load kg	Lower Shelf Load kg	Chipboard Top		MFC Top	
			Model	Price	Model	Price
Full Undershelf Workstation						
1830 x 915 x 915	600	400	RRWS/18/09/09/03	£199.52	RRWS/18/09/09/03/M	£259.40
1830 x 1220 x 915	600	400	RRWS/18/12/09/03	£230.63	RRWS/18/12/09/03/M	£299.79
1830 x 1830 x 915	600	400	RRWS/18/18/09/03	£316.68	RRWS/18/18/09/03/M	£411.73
1830 x 2440 x 915	600	400	RRWS/18/24/09/03	£386.69	RRWS/18/24/09/03/M	£502.71
Half Undershelf Workstation						
1830 x 915 x 915	600	400	RRWSH/18/09/09/03	£190.51	RRWSH/18/09/09/03/M	£247.73
1830 x 1220 x 915	600	400	RRWSH/18/12/09/03	£215.16	RRWSH/18/12/09/03/M	£279.69
1830 x 1830 x 915	600	400	RRWSH/18/18/09/03	£292.20	RRWSH/18/18/09/03/M	£379.79
1830 x 2440 x 915	600	400	RRWSH/18/24/09/03	£355.08	RRWSH/18/24/09/03/M	£461.58
T Bar Workstation						
1830 x 915 x 915	600	-	RRWST/18/09/09/03	£174.59	RRWST/18/09/09/03/M	£227.00
1830 x 1220 x 915	600	-	RRWST/18/12/09/03	£198.78	RRWST/18/12/09/03/M	£258.43
1830 x 1830 x 915	600	-	RRWST/18/18/09/03	£262.12	RRWST/18/18/09/03/M	£340.75
1830 x 2440 x 915	600	-	RRWST/18/24/09/03	£314.81	RRWST/18/24/09/03/M	£409.24

Workbenches & Drawer Cabinets



RRMB/09/12/07



Allow 10 days for the MFC Top



Heavy Duty Rivet Mobile Bench

- >> No nuts & bolts required - the system simply taps together with the use of a hammer/mallet
- >> 18mm thick worktops
- >> Mobile on 4 swivel (2 with brakes) castors

Overall Size H x W x D mm	Bench Load kg	Chipboard Top		MFC Top	
		Model	Price	Model	Price
880 x 915 x 610	300	RRMB/09/09/06	£172.61	RRMB/09/09/06/M	£224.39
880 x 915 x 762	300	RRMB/09/09/07	£181.62	RRMB/09/09/07/M	£236.12
880 x 915 x 915	300	RRMB/09/09/09	£192.67	RRMB/09/09/09/M	£250.50
880 x 1220 x 610	300	RRMB/09/12/06	£185.19	RRMB/09/12/06/M	£240.77
880 x 1220 x 762	300	RRMB/09/12/07	£195.61	RRMB/09/12/07/M	£254.30
880 x 1220 x 915	300	RRMB/09/12/09	£208.13	RRMB/09/12/09/M	£270.56
880 x 1525 x 610	300	RRMB/09/15/06	£197.71	RRMB/09/15/06/M	£257.03
880 x 1525 x 762	300	RRMB/09/15/07	£209.55	RRMB/09/15/07/M	£272.37
880 x 1525 x 915	300	RRMB/09/15/09	£223.54	RRMB/09/15/09/M	£290.68
880 x 1830 x 610	300	RRMB/09/18/06	£221.78	RRMB/09/18/06/M	£288.35
880 x 1830 x 762	300	RRMB/09/18/07	£236.80	RRMB/09/18/07/M	£307.84
880 x 1830 x 915	300	RRMB/09/18/09	£254.13	RRMB/09/18/09/M	£330.39



RRWPS/18/15/09/03

Rivet Wide Packing Workstations

- >> No nuts & bolts required - the system simply taps together with the use of a hammer/mallet
- >> 18mm thick worktops
- >> Complete with 2 x roll dispensers (bubble wrap, corrugated packaging wrapping & small parts bins are not included)



Allow 10 days for the MFC Top



COLOUR OPTIONS

- Blue & Grey
 - Blue & Orange
- specify when ordering

FROM ONLY
£320.64



Overall Size H x W x D mm	Chipboard Top		MFC Top	
	Model	Price	Model	Price
1830 x 1525 x 915	RRWPS/18/15/09/03	£320.64	RRWPS/18/15/09/03/M	£416.83
1830 x 1830 x 915	RRWPS/18/18/09/03	£357.63	RRWPS/18/18/09/03/M	£464.93

Adjustable Height Workbench

BESTSELLER

FROM ONLY
£245.30

- >> 38mm MDF worktop with a rubber edge
- >> Constructed from steel angle
- >> Half depth bottom shelf with rear lip



WB100Z

Information

**HEIGHT
ADJUSTABLE IN
25MM INCREMENTS**



WB101Z

Overall Size L x W x H mm	Weight kg	Model	Price
1220 x 760 x 760 to 880	45	WB100Z	£245.30
1520 x 760 x 760 to 880	50	WB101Z	£269.85



Workbenches & Drawer Cabinets

Taurus Utility Workbenches

FROM STOCK



- » Ideal for factories, labs, retail environments & schools etc
- » 20mm high density laminate worktop with 3mm PVC edging
- » Powder coated, iridium silver finish on the workbench frames
- » Drawer sets come complete with central locking & have a load capacity of 50kg per drawer. Each drawer set can be fitted either on the left or right of the bench. Cupboard sets can only be positioned on the right hand side
- » Supplied knock down



ST1841575

Overall Size H x W mm	Depth: 750mm		Depth: 900mm	
	Model	Price	Model	Price
Workbench				
840 x 1500	ST1841575	£382.25	ST1841590	£446.45
840 x 1800	ST1841875	£389.90	ST1841890	£459.05



ST2841575



ST3841575

Overall Size H x W mm	Depth: 750mm		Depth: 900mm	
	Model	Price	Model	Price
Workbench with Single Drawer				
840 x 1500	ST2841575	£538.80	ST2841590	£603.00
840 x 1800	ST2841875	£546.45	ST2841890	£615.60

Overall Size H x W mm	Depth: 750mm		Depth: 900mm	
	Model	Price	Model	Price
Workbench with 2 x Single Drawers				
840 x 1500	ST3841575	£695.35	ST3841590	£759.50
840 x 1800	ST3841875	£702.95	ST3841890	£772.15



ST4841575



ST5841575

Overall Size H x W mm	Depth: 750mm		Depth: 900mm	
	Model	Price	Model	Price
Workbench with Triple Drawer				
840 x 1500	ST4841575	£679.50	ST4841590	£743.70
840 x 1800	ST4841875	£687.15	ST4841890	£756.30

Overall Size H x W mm	Depth: 750mm		Depth: 900mm	
	Model	Price	Model	Price
Workbench with 2 x Triple Drawers				
840 x 1500	ST5841575	£976.75	ST5841590	£1040.95
840 x 1800	ST5841875	£984.40	ST5841890	£1053.55



ST6841575



ST7841575

Overall Size H x W mm	Depth: 750mm		Depth: 900mm	
	Model	Price	Model	Price
Workbench with Triple Drawer & Single Drawer				
840 x 1500	ST6841575	£836.05	ST6841590	£900.20
840 x 1800	ST6841875	£843.70	ST6841890	£912.85

Overall Size H x W mm	Depth: 750mm		Depth: 900mm	
	Model	Price	Model	Price
Workbench with Single Cupboard				
840 x 1500	ST7841575	£522.50	ST7841590	£586.70
840 x 1800	ST7841875	£530.15	ST7841890	£599.30



ST8841575

- >> Single Drawer Set: 220H x 420W x 420D mm
- >> Triple Drawer Set: 435H x 420W x 420D mm
- >> Cupboard Set: 435H x 420W x 420D mm

Overall Size H x W mm	Depth: 750mm		Depth: 900mm	
	Model	Price	Model	Price
Workbench with Single Drawer & Single Cupboard				
840 x 1500	ST8841575	£679.05	ST8841590	£743.25
840 x 1800	ST8841875	£686.70	ST8841890	£755.85

Overall Size H x W mm	Depth: 750mm		Depth: 900mm	
	Model	Price	Model	Price
Workbench with Triple Drawer & Single Cupboard				
840 x 1500	ST9841575	£819.75	ST9841590	£883.95
840 x 1800	ST9841875	£827.40	ST9841890	£896.55

Taurus Utility Workbench Accessories

DOOR & DRAWER COLOUR OPTIONS



**Red
FROM STOCK**

**Blue
FROM STOCK**

**Black
extended
lead time**

Other colours available - please call for details



Key	Description	Model	Price
A	760mm Rear Support Posts	ST076RSP	£66.70*
A	1180mm Rear Support Posts	ST118RSP	£80.75*
B	Upper Shelf (300Dmm) for 1500mm Benches	ST3015US	£111.05*
B	Upper Shelf (300Dmm) for 1800mm Benches	ST3018US	£132.20*
C	Light/Tool Rail Support for 1500mm Benches	ST15LTR	£74.70*
C	Light/Tool Rail Support for 1800mm Benches	ST18LTR	£77.30*
D	LED Light - 1200mm Long - please call for details		

Key	Description	Model	Price
E	Louvred back panel (480H mm) with Pinboard for 1500mm Benches	ST15LBP	£140.15*
E	Louvred back panel (480H mm) with Pinboard for 1800mm Benches	ST18LBP	£155.85*
F	Worktop Service Duct for 1500mm Benches**	ST15WSD	£110.05*
F	Worktop Service Duct for 1800mm Benches**	ST18WSD	£115.25*
G	Flat Screen Support Arm	STFSSA	£67.00*

**Worktop Service Ducts are not supplied with cabling and must be fitted by a qualified electrician *Accessories must be ordered with the Workbenches



ST18157 with Accessories



DOOR & DRAWER COLOUR OPTIONS	
■ Red	
■ Black	
■ Blue	
specify when ordering	

i Information

IDEAL FOR ASSEMBLY, PRODUCTION & LIGHT ENGINEERING ENVIRONMENTS

- » Workshop bench suitable for use in assembly, production & light engineering environments
- » 20mm high density laminate worktop with 3mm PVC edging
- » Powder coated, iridium silver finish on the workbench frames
- » Cantilever design allows maximum leg room
- » Height adjustable feet for easy levelling
- » Accessories available - see the next page for details
- » Drawer sets come complete with central locking & have a load capacity of 50kg per drawer. Each drawer set can be fitted either on the left or right of the bench. Cupboard sets can only be positioned on the right hand side

Description	Overall Size H x W x D mm	Model	Price
Cantilever Workbench - 20mm Thick Laminate Top			
Cantilever Workbench	840 x 1500 x 750	ST18157	£414.15
	840 x 1500 x 900	ST18159	£416.95
	840 x 1800 x 750	ST18187	£428.90
	840 x 1800 x 900	ST18189	£498.05

Description	Overall Size H x W x D mm	Model	Price
Drawers & Cupboards			
Single Drawer	220 x 420 x 420	STSD244	£156.55*
Triple Drawer	435 x 420 x 420	STTD444	£297.25*
Storage Cupboard	435 x 420 x 420	STSC444	£140.30*

Taurus Cantilever Workbenches

**TAURUS WORKBENCHES
FROM STOCK**



ST18157 & STSC444



DOOR & DRAWER COLOUR OPTIONS

- Red
- Black
- Blue

specify when ordering

Taurus Cantilever Workbench Accessories

DOOR & DRAWER COLOUR OPTIONS



**Red
FROM STOCK**

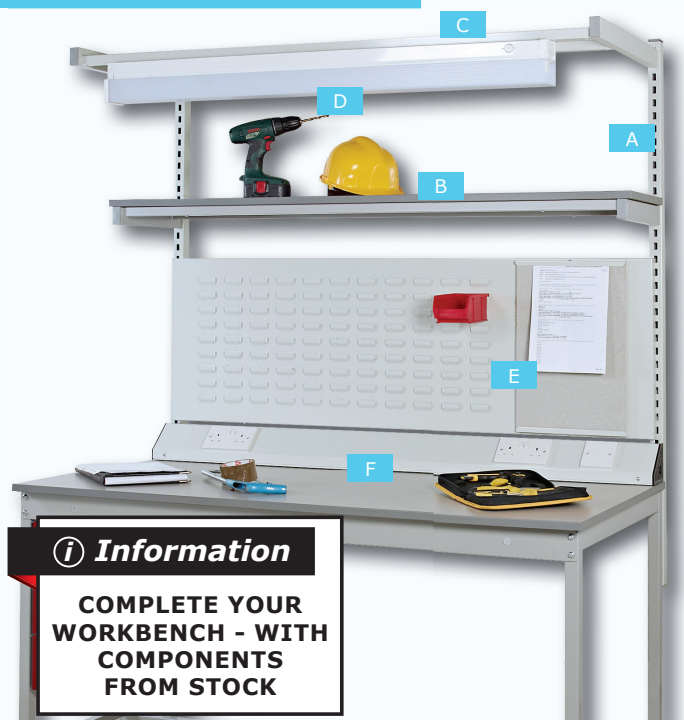


**Blue
FROM STOCK**



**Black
extended
lead time**

Other colours available - please call for details



i Information

**COMPLETE YOUR
WORKBENCH - WITH
COMPONENTS
FROM STOCK**

Key	Description	Model	Price
A	760mm Rear Support Posts	ST076RSP	£66.70*
A	1180mm Rear Support Posts	ST118RSP	£80.75*
B	Upper Shelf (300Dmm) for 1500mm Benches	ST3015US	£111.05*
B	Upper Shelf (300Dmm) for 1800mm Benches	ST3018US	£132.20*
C	Light/Tool Rail Support for 1500mm Benches	ST15LTR	£74.70*
C	Light/Tool Rail Support for 1800mm Benches	ST18LTR	£77.30*
D	LED Light - 1200mm Long - please call for details		

Key	Description	Model	Price
E	Louvred back panel (480H mm) with Pinboard for 1500mm Benches	ST15LBP	£140.15*
E	Louvred back panel (480H mm) with Pinboard for 1800mm Benches	ST18LBP	£155.85*
F	Worktop Service Duct for 1500mm Benches**	ST15WSD	£110.05*
F	Worktop Service Duct for 1800mm Benches**	ST18WSD	£115.25*
G	Flat Screen Support Arm	STFSSA	£67.00*

**Worktop Service Ducts are not supplied with cabling and must be fitted by a qualified electrician *Accessories must be ordered with the Workbenches

Workbenches & Drawer Cabinets

All-purpose Heavy Duty Workbenches

FROM ONLY
£569.70



ECO157S, ECS750Z,
ECD100L & ECC204R



i Information

**HEAVY DUTY
WORKBENCHES
IDEAL FOR MANY
DIFFERENT
ENVIRONMENTS**



ECO157S

- » Robust all-purpose workbench
- » Fully welded construction with formed steel worktop
- » Optional extras available
- » Worktop height: 840mm

Workbench				
Length mm	Depth mm	Weight kg	Model	Price
1500	750	46	ECO157S	£569.70
1800	900	57	ECO189S	£603.90
Optional Extras - Factory Fitted				
Description			Model	Price
Lower Shelf to Suit ECO157S			ECS750Z	£95.20
Lower Shelf to Suit ECO189S			ECS900Z	£106.00
Single Lockable Drawer	Left	ECD100L	£252.70	
	Right	ECD200R	£252.70	
Lockable Cupboard	Left	ECC104L	£239.30	
	Right	ECC204R	£239.30	

Heavy Duty Modular Workbenches



PR222M fitted with PRS22M, PRE22M & PRSE2M



PR222M

- » Available up to 1500mm deep to enable working from both sides
- » Worktop height is adjustable in 25mm increments from 840 to 940mm
- » Main benches are supplied fully assembled & extensions knock down. Extension units are not available on their own
- » 4 colour options available for the drawers & cupboard:
Red, Green, Blue or Grey - *please specify when ordering*



Modular Workbenches & Extension Units

Bench mm		Bench						Extension - only supplied with the main benches					
		Top Options						Top Options					
		28mm Vinyl		25mm MDF		25mm Plywood		28mm Vinyl		25mm MDF		25mm Plywood	
Length	Depth	Model	Price	Model	Price	Model	Price	Model	Price	Model	Price	Model	Price
1500	750	PR157L	£780.90	PR157M	£634.05	PR157P	£812.90	PRE57L	£638.25	PRE57M	£519.70	PRE57P	£662.10
	900	PR159L	£793.80	PR159M	£648.10	PR159P	£823.70	PRE59L	£654.85	PRE59M	£533.80	PRE59P	£662.60
2000	1200	PR222L	£950.45	PR222M	£748.60	PR222P	£871.40	PRE22L	£773.65	PRE22M	£559.50	PRE22P	£688.25
	1500	PR225L	£1011.40	PR225M	£859.20	PR225P	£975.40	PRE25L	£809.20	PRE25M	£655.30	PRE25P	£782.30

Optional Lower Shelves to suit Benches & Extension Units - factory fitted

To Suit Bench mm		Shelf Size mm		Lower Shelf to suit Bench						Lower Shelf to suit Extension					
				Top Options						Top Options					
				28mm Vinyl		25mm MDF		25mm Plywood		28mm Vinyl		25mm MDF		25mm Plywood	
Length	Depth	Length	Depth	Model	Price	Model	Price	Model	Price	Model	Price	Model	Price	Model	Price
1500	750	1500	630	PRS57L	£169.45	PRS57M	£91.70	PRS57P	£132.10	PRSE7L	£169.45	PRSE7M	£91.70	PRSE7P	£132.10
	900		780	PRS59L	£183.05	PRS59M	£105.80	PRS59P	£178.35	PRSE9L	£183.05	PRSE9M	£105.80	PRSE9P	£178.35
2000	1200	2000	1130	PRS22L	£271.10	PRS22M	£120.00	PRS22P	£198.35	PRSE2L	£271.10	PRSE2M	£120.00	PRSE2P	£198.35
	1500		1380	PRS25L	£318.05	PRS25M	£167.60	PRS25P	£258.50	PRSE5L	£318.05	PRSE5M	£167.60	PRSE5P	£258.50

Optional Extras - factory fitted

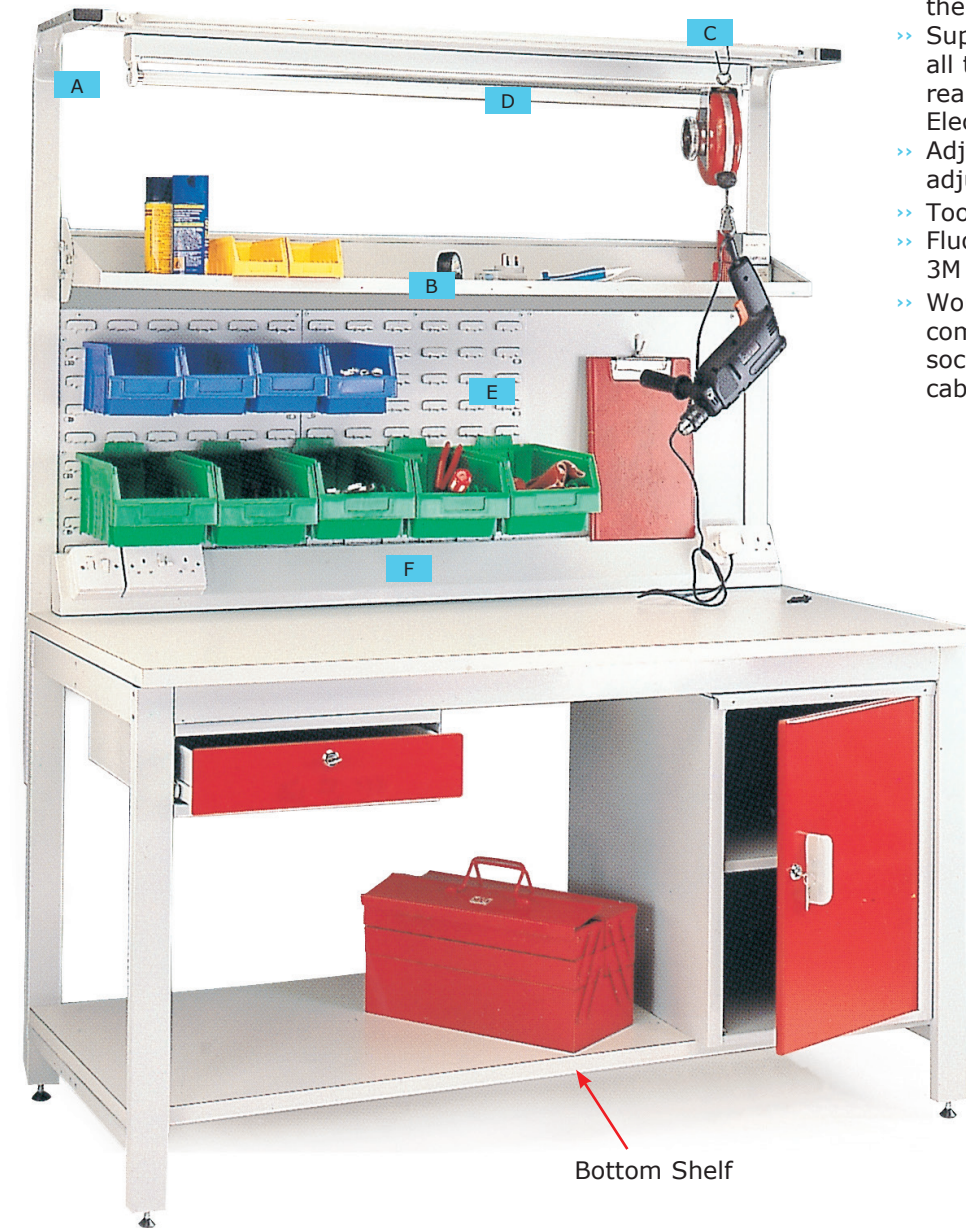
Description	To Suit	Model	Price
Upper 2 Shelf	1500	PRPT215Z	£210.70
Upper 2 Shelf	2000	PRPT220Z	£218.15
Light Rail - requires support legs		PRPT97Z	£298.80
Tool Rail - requires support legs		PRPT99Z	£51.10
Support Legs - for use with above		PRPT06Z	£168.95
Electrical Powerpoint		PRPT98Z	£344.30
Single Drawer: 440W x 570D x 155H mm	Left	PRPT10ZL	£251.45
	Right	PRPT20ZR	£251.45
Double Drawer: 440W x 570D x 300H mm	Left	PRPT11ZL	£410.40
	Right	PRPT21ZR	£410.40
Three Drawer: 440W x 570D x 445H mm	Left	PRPT12ZL	£558.95
	Right	PRPT22ZR	£558.95
Four Drawer: 440W x 570D x 590H mm	Left	PRPT13ZL	£690.00
	Right	PRPT23ZR	£690.00
Lockable Cupboard: 440W x 570D x 590H mm	Left	PRPT14ZL	£237.15
	Right	PRPT24ZR	£237.15



PR222M fitted with PRS22M, PRPT220Z, PRPT13ZL & PRPT21ZR

Workbenches & Drawer Cabinets

General Purpose Workbenches - Accessories



- >> Accessories for the General Purpose Workbenches shown on the opposite page
- >> Support Legs - must be used with all the optional extras except the rear/side lips & the Worktop Electric Power Point
- >> Adjustable Cantilever Shelf - adjustable to 3 positions
- >> Tool Rail - runs the length of the bench
- >> Fluorescent Light - supplied with 3M of core cable & 13 amp plug
- >> Worktop Electric Power Point - complete with 2 double 13 amp sockets. Supplied with 3M of core cable & a safety cut out plug

i Information

**COMPLETE YOUR
WORKBENCH
WITH THESE
ACCESSORIES**



Drawer & Cupboards

- >> Factory fitted cupboard or single drawer
- >> Drawer size: 440W x 570D x 155H mm
- >> Cupboard size: 440W x 570D x 590H mm



COLOUR OPTIONS

- Red
- Green
- Blue
- Grey

specify when ordering

Left Fitting Model	Right Fitting Model	Price
Lockable Single Drawer		
OPT100ZL	OPT200ZR	£252.70*
Cupboard		
OPT104ZL	OPT204ZR	£239.30*

Key	Description	1500mm Benches		1800mm Benches	
		Model	Price	Model	Price
A	Rear Support Legs	OPT106Z	£168.95*	OPT106Z	£168.95*
B	Adjustable Cantilever Shelf	OPT252Z	£184.50*	OPT282Z	£191.60*
C	Tool Rail	OPT199Z	£51.10*	OPT199Z	£51.10*
D	Fluorescent Light - 1220mm Long	OPT197Z	£299.80*	OPT197Z	£299.80*
E	Louved back panel	OPT353Z	£256.90*	OPT383Z	£311.60*
F	Worktop Electric Power Point**	OPT198Z	£345.15*	-	-
-	Rear Lips (Vinyl & Plywood Tops only)	OPT454Z	£36.80*	OPT484Z	£62.75*
Key Description		750mm Deep Benches		900mm Deep Benches	
-	Side Lips (Vinyl & Plywood Tops only)	OPT555Z	£41.35*	OPT585Z	£42.30*

Bottom Shelf

>> *The shelf sits within the frame of the bench*

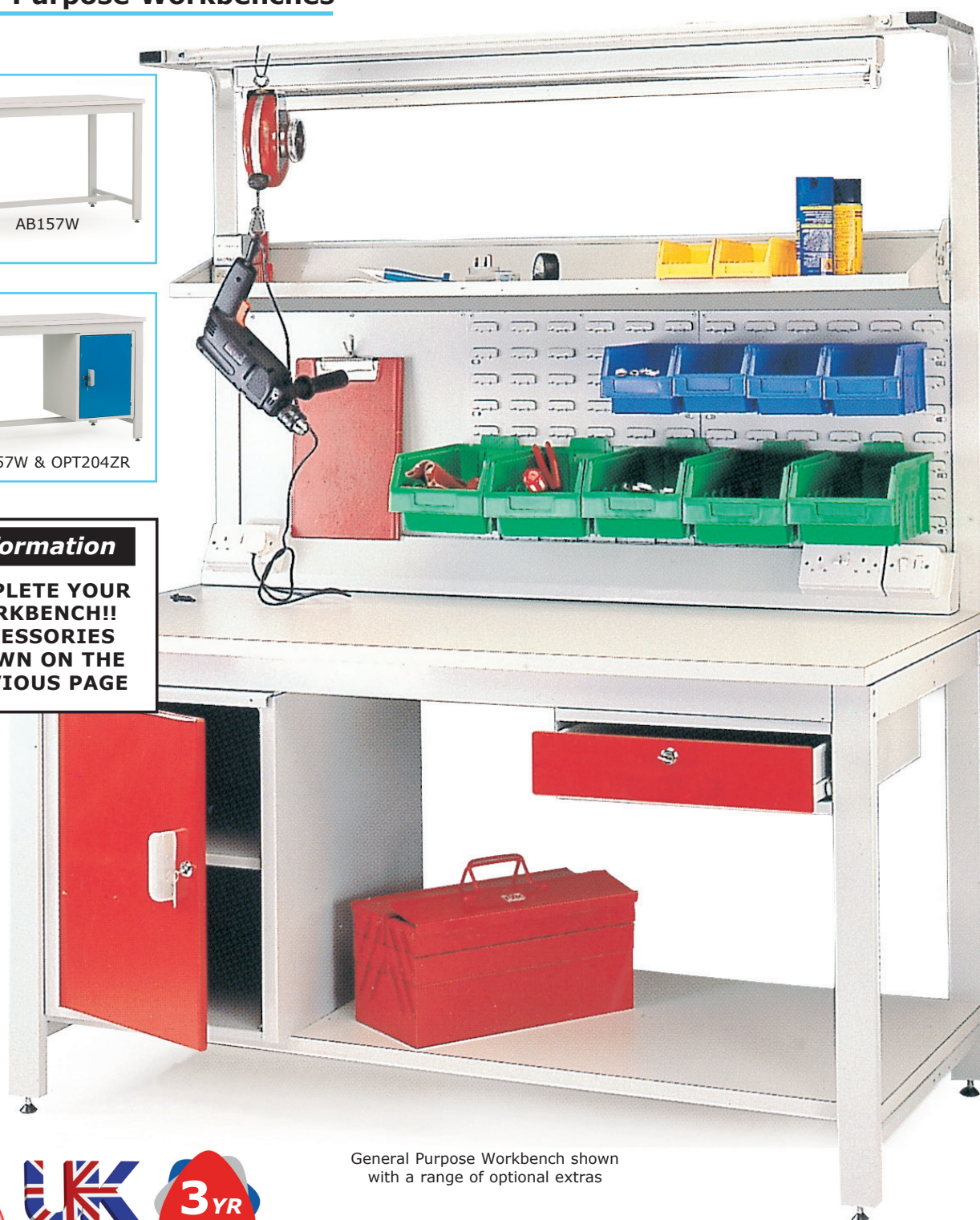
To Suit		General Purpose Bench - Bottom Shelf					
		28mm Vinyl		25mm Plywood		28mm Waverite	
Length mm	Depth mm	Model	Price	Model	Price	Model	Price
1500	750	ABS57L	£251.10*	ABS57P	£195.45*	ABS57W	£268.30*
	900	ABS59L	£276.70*	ABS59P	£241.65*	ABS59W	£281.10*
1800	750	ABS87L	£236.00*	ABS87P	£196.55*	ABS87W	£282.20*
	900	ABS89L	£281.10*	ABS89P	£242.50*	ABS89W	£354.45*

General Purpose Workbenches



Information

**COMPLETE YOUR
WORKBENCH!!
ACCESSORIES
SHOWN ON THE
PREVIOUS PAGE**



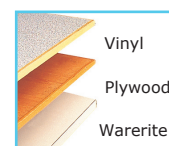
General Purpose Workbench shown
with a range of optional extras



- >> Fully welded bench frames meet the requirements of the assembly & workshop environments
- >> Fitted with adjustable feet to ensure a level work surface
- >> Worktop height: 840mm

Worktop Options

- >> 28mm vinyl faced plywood with wood edging
- >> 25mm exterior plywood with wood edging
- >> 28mm plastic chipboard faced with warerite or similar grey surface & edges



Top Options		28mm Vinyl		25mm Plywood		28mm Warerite	
Length mm	Depth mm	Model	Price	Model	Price	Model	Price
1500	750	AB157L	£734.45	AB157P	£675.25	AB157W	£745.90
	900	AB159L	£762.75	AB159P	£694.40	AB159W	£784.60
1800	750	AB187L	£759.50	AB187P	£669.45	AB187W	£820.15
	900	AB189L	£785.95	AB189P	£724.15	AB189W	£898.15

Workbenches & Drawer Cabinets

Heavy Duty Workbenches



Workbench shown with optional triple drawer, cupboard unit & accessories

- » Heavy duty bench suitable for heavy duty applications such as engineering & manufacturing
- » Fully welded construction for extra strength
- » Powder coated dark grey framework

- » Steel plate, beech, linoleum & laminate worktop options
- » Full range of accessories available including drawers, cupboards, shelves and sliding doors.
- » Standard bench height: 840mm (760 & 920mm also available - call for details)

Drawer & Cupboard Options

Description	Model	Price
Single Drawer - 220 x 420 x 420	BXDR04021	£179.23
Triple Drawer - 435 x 420 x 420	BXDR04043	£307.93
Cupboard Unit - 560 x 420 x 420	BXCU04051	£195.51

Please Note: Only Light Grey Drawers & Cupboards are available on 5 Day Delivery



Heavy Duty Workbenches

Steel Plate Worktop 2 mm Thick			Linoleum Worktop 20mm Thick			Solid Beech Worktop 27mm Thick		
Size H x W x D mm	Model	Price	Size H x W x D mm	Model	Price	Size H x W x D mm	Model	Price
840 x 1200 x 600	BJ841260SKXX	£340.53	840 x 1200 x 600	BJ8412608KXX	£405.80	840 x 1200 x 600	BJ841260BKXX	£408.87
840 x 1200 x 750	BJ841275SKXX	£379.65	840 x 1200 x 750	BJ8412758KXX	£420.77	840 x 1200 x 750	BJ841275BKXX	£435.08
840 x 1200 x 900	BJ841290SKXX	£388.92	840 x 1200 x 900	BJ8412908KXX	£468.60	840 x 1200 x 900	BJ841290BKXX	£476.86
840 x 1500 x 600	BJ841560SKXX	£390.75	840 x 1500 x 600	BJ8415608KXX	£487.69	840 x 1500 x 600	BJ841560BKXX	£524.32
840 x 1500 x 750	BJ841575SKXX	£463.18	840 x 1500 x 750	BJ8415758KXX	£523.86	840 x 1500 x 750	BJ841575BKXX	£553.94
840 x 1500 x 900	BJ841590SKXX	£472.72	840 x 1500 x 900	BJ8415908KXX	£597.21	840 x 1500 x 900	BJ841590BKXX	£606.46
840 x 1800 x 600	BJ841860SKXX	£415.11	840 x 1800 x 600	BJ8418608KXX	£522.43	840 x 1800 x 600	BJ841860BKXX	£549.82
840 x 1800 x 750	BJ841875SKXX	£487.54	840 x 1800 x 750	BJ8418758KXX	£537.43	840 x 1800 x 750	BJ841875BKXX	£607.88
840 x 1800 x 900	BJ841890SKXX	£505.98	840 x 1800 x 900	BJ8418908KXX	£619.85	840 x 1800 x 900	BJ841890BKXX	£673.95

Laminate Worktop 20mm Thick			Lower Shelves - Fitted Steel Plate		
Size H x W x D mm	Model	Price	To Fit W x D mm	Model	Price
840 x 1200 x 600	BJ841260PKXX	£405.80	1200 x 600	BXLS1206XXXX	£86.43
840 x 1200 x 750	BJ841275PKXX	£420.77	1200 x 750	BXLS1207XXXX	£103.43
840 x 1200 x 900	BJ841290PKXX	£468.60	1200 x 900	BXLS1209XXXX	£103.43
840 x 1500 x 600	BJ841560PKXX	£487.69	1500 x 600	BXLS1506XXXX	£100.59
840 x 1500 x 750	BJ841575PKXX	£523.86	1500 x 750	BXLS1507XXXX	£119.01
840 x 1500 x 900	BJ841590PKXX	£597.21	1500 x 900	BXLS1509XXXX	£119.01
840 x 1800 x 600	BJ841860PKXX	£522.43	1800 x 600	BXLS1806XXXX	£114.76
840 x 1800 x 750	BJ841875PKXX	£537.43	1800 x 750	BXLS1807XXXX	£130.34
840 x 1800 x 900	BJ841890PKXX	£619.85	1800 x 900	BXLS1809XXXX	£130.34

**All RED product codes
are available
on 5 Day Delivery**

Workbench Accessories

Heavy Duty Bench Accessories			
Key	Description	Model	Price
A	760mm Rear Support Posts	BESP760SXXXX	£71.84
A	1180mm Rear Support Posts	BESP1180XXXX	£87.33
B	Upper shelf 300mm Laminate for 1200mm bench	BEUS1200PXXX	£100.33
B	Upper shelf 300mm Laminate for 1500mm bench	BEUS1500PXXX	£120.12
B	Upper shelf 300mm Laminate for 1800mm bench	BEUS1800PXXX	£142.96
C	Light/Tool Rail Support for 1200mm bench	BERS1200XLXX	£75.09
C	Light/Tool Rail Support for 1500mm bench	BERS1500XLXX	£80.76
C	Light/Tool Rail Support for 1800mm bench	BERS1800XLXX	£83.59
-	3 Setting LED Light - 1200mm	BE3LED1200XX	£58.64
-	Tilting LED Light - 30 Watt - 1200mm	BELED3012XXX	£155.40
E	Louvred back panel with pinboard for 1200mm bench	BELO4812IXXX	£138.84
E	Louvred back panel with pinboard for 1500mm bench	BELO4815IXXX	£151.60
E	Louvred back panel with pinboard for 1800mm bench	BELO4818IXXX	£168.60
F	Worktop service duct for 1200mm bench	BESDWT122XXX	£116.18
F	Worktop service duct for 1500mm bench	BESDWT15XXX	£119.01
F	Worktop service duct for 1800mm bench	BESDWT18XXX	£124.68
G	Post fitted service duct for 1200mm bench	BESDSP12XXXX	£127.51
G	Post fitted service duct for 1500mm bench	BESDSP15XXXX	£133.38
G	Post fitted service duct for 1800mm bench	BESDSP18XXXX	£142.23
H	Monitor and keyboard Support Arm	BEMONARMFMFG	£168.76
-	Flat Screen Support Arm	BEMONARMLSC	£66.41

Heavy Duty Bench Accessories			
Key	Description	Model	Price
I	Retaining Lip for 1200 x 600mm bench	BXRL1206XXXX	£50.56
I	Retaining Lip for 1200 x 750mm bench	BXRL1208XXXX	£57.77
I	Retaining Lip for 1200 x 900mm bench	BXRL1209XXXX	£65.00
I	Retaining Lip for 1500 x 600mm bench	BXRL1506XXXX	£57.77
I	Retaining Lip for 1500 x 750mm bench	BXRL1507XXXX	£65.00
I	Retaining Lip for 1500 x 900mm bench	BXRL1509XXXX	£69.81
I	Retaining Lip for 1800 x 600mm bench	BXRL1806XXXX	£65.00
I	Retaining Lip for 1800 x 750mm bench	BXRL1807XXXX	£69.81
I	Retaining Lip for 1800 x 900mm bench	BXRL1809XXXX	£77.10
J	Vice Plate	BXVICEPLXXXX	£22.67



Workbenches & Drawer Cabinets

Heavy Duty Workbench Kits with Laminate Tops



NEW



Size H x W x D mm	Model	Price
840 x 1200 x 750	BJ841275PX1A	£795.51
840 x 1500 x 750	BJ841575PX1B	£898.59
840 x 1800 x 750	BJ841875PX1C	£912.17

Size H x W x D mm	Model	Price
840 x 1200 x 750	BJ841275PX3A	£924.22
840 x 1500 x 750	BJ841575PX3B	£1027.30
840 x 1800 x 750	BJ841875PX3C	£1040.88



Size H x W x D mm	Model	Price
840 x 1200 x 750	BJ841275PX5A	£1106.52
840 x 1500 x 750	BJ841575PX5B	£1242.15
840 x 1800 x 750	BJ841875PX5C	£1295.56

Size H x W x D mm	Model	Price
840 x 1200 x 750	BJ841275PX7A	£1235.23
840 x 1500 x 750	BJ841575PX7B	£1370.86
840 x 1800 x 750	BJ841875PX7C	£1424.28



Size H x W x D mm	Model	Price
840 x 1200 x 750	BJ841275PX9A	£1371.92
840 x 1500 x 750	BJ841575PX9B	£1516.05
840 x 1800 x 750	BJ841875PX9C	£1577.97

Size H x W x D mm	Model	Price
840 x 1200 x 750	BJ841275P11A	£1500.63
840 x 1500 x 750	BJ841575P11B	£1644.76
840 x 1800 x 750	BJ841875P11C	£1706.68

Heavy Duty Workbench Kits with Beech Tops



NEW

UK
manufactured



Size H x W x D mm	Model	Price
840 x 1200 x 750	BJ841275BX2A	£809.82
840 x 1500 x 750	BJ841575BX2B	£928.67
840 x 1800 x 750	BJ841875BX2C	£982.62

Size H x W x D mm	Model	Price
840 x 1200 x 750	BJ841275BX4A	£938.53
840 x 1500 x 750	BJ841575BX4B	£1057.38
840 x 1800 x 750	BJ841875BX4C	£1111.33



Size H x W x D mm	Model	Price
840 x 1200 x 750	BJ841275BX6A	£1120.83
840 x 1500 x 750	BJ841575BX6B	£1272.23
840 x 1800 x 750	BJ841875BX6C	£1366.01

Size H x W x D mm	Model	Price
840 x 1200 x 750	BJ841275BX8A	£1249.54
840 x 1500 x 750	BJ841575BX8B	£1400.94
840 x 1800 x 750	BJ841875BX8C	£1494.73



Size H x W x D mm	Model	Price
840 x 1200 x 750	BJ841275B10A	£1386.23
840 x 1500 x 750	BJ841575B10B	£1546.13
840 x 1800 x 750	BJ841875B10C	£1648.42

Size H x W x D mm	Model	Price
840 x 1200 x 750	BJ841275B12A	£1514.94
840 x 1500 x 750	BJ841575B12B	£1674.84
840 x 1800 x 750	BJ841875B12C	£1777.14

H.D. Premium Stainless Steel Workbenches

- » Fully welded construction
- » Manufactured from food quality grade 304 stainless steel
- » Ideal for food preparation, healthcare facilities & any other environment where hygiene is essential
- » Worktop height: 840mm
- » Hygienic - can be steam cleaned



The bottom shelf has an integral rear lip

i Information

**CONSTRUCTED
COMPLETELY FROM
FOOD QUALITY
GRADE 304
STAINLESS STEEL**

PB157S shown with PBS57S,
PBD03S, PBC04S, PBRL1S, PBPB5P,
PBSR6P, PBCS2P & PBLF7P



Workbench

Overall Size L x D mm	Weight kg	Model	Price
1500 x 750	75	PB157S	£1278.35
1800 x 900	102	PB189S	£1497.30

Optional Extras - factory fitted

Description	Model	Price
Bottom Shelf - 1500 x 575	PBS57S	£190.05
Bottom Shelf - 1800 x 575	PBS89S	£213.90
Cantilever Shelf* (Horizontal Fitting)	PBCS2P	£234.05
Rear Retaining Lip	PBRL1S	£82.70
Side Retaining Lip - Each	PBSL2S	£52.30
Single Drawer	PBD03S	£475.20
Lockable Cupboard	PBC04S	£519.90
Electric Powerpoint	PBPB5P	£473.30
Light Fitment*	PBLF7P	£311.10
Support Rails* - for use with the Light Fitment & Cantilever Shelf	PBSR6P	£246.90

* Support Rails are needed for use with Cantilever Shelf & Light Fitment



PB157S fitted with
PBC04S & PBD03S



PB157S shown
with PBS57S

Stainless Steel Preparation Workbenches

- » Ideal for food preparation, healthcare facilities & any other environment where hygiene is essential
- » Manufactured from grade 304 stainless steel
- » Worktop height: 875mm
- » Hygienic - can be steam cleaned
- » Complete with undershelf & rear worktop retaining lip

i Information

**CONSTRUCTED
COMPLETELY FROM
FOOD QUALITY
GRADE 304
STAINLESS STEEL**



SSB6502

Workbench Length mm	650mm Deep		750mm Deep	
	Model	Price	Model	Price
900	SSB6501	£491.70	SSB7501	£528.35
1000	SSB6502	£528.35	SSB7502	£566.70
1200	SSB6503	£548.35	SSB7503	£586.70
1500	SSB6504	£576.70	SSB7504	£615.00
1800	SSB6505	£625.00	SSB7505	£663.35

Stainless Steel Preparation Workbenches with Bowl Sinks

- » Ideal for food preparation, healthcare facilities & any other environment where hygiene is essential
- » Manufactured from grade 304 stainless steel
- » Worktop height: 875mm
- » Hygienic - can be steam cleaned
- » Complete with undershelf & rear worktop retaining lip
- » Valance is cladding that covers the front of the sink to the bowls



SSB6511 & SSBMT01

Workbench Accessories

Must be ordered with Workbenches

Description	Model	Price
Mixer Taps for Sinks	SSBMT01	£116.70
Aquajet Spray Wash	SSBMT02	£406.70
Valance	SSBMT03	£80.00

Workbench with Single Bowl Sink

Workbench Length mm	650mm Deep		750mm Deep	
	Model	Price	Model	Price
900	SSB6506	£911.70	SSB7506	£945.00
1000	SSB6507	£936.70	SSB7507	£970.00
1200	SSB6508	£961.70	SSB7508	£995.00
1500	SSB6509	£995.00	SSB7509	£1028.35
1800	SSB6510	£1053.35	SSB7510	£1095.00

Workbench with Double Bowl Sink

Workbench Length mm	650mm Deep		750mm Deep	
	Model	Price	Model	Price
1500	SSB6511	£1295.00	SSB7511	£1328.35
1800	SSB6512	£1361.70	SSB7512	£1361.70
2000	SSB6513	£1428.35	SSB7513	£1428.35
2400	SSB6514	£1495.00	SSB7514	£1495.00

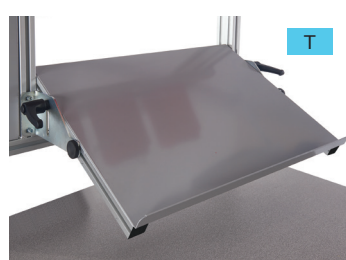
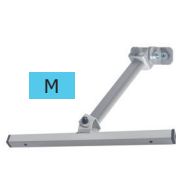
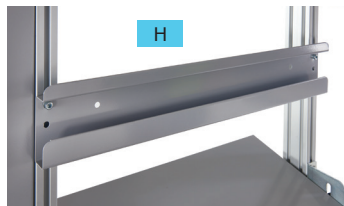
Binary Electric Height Adjustable Workbenches

Information

**COMPLETE YOUR
WORKBENCH
WITH THESE
ACCESSORIES**



Binary Workbench Accessories			
Key	Description	Model	Price
A	Aluminium Accessory Frame (to suit 1200mm bench)	BIALBFME12XX	£181.38
A	Aluminium Accessory Frame (to suit 1500mm bench)	BIALBFME15XX	£204.33
A	Aluminium Accessory Frame (to suit 1800mm bench)	BIALBFME18XX	£236.01
B	Laminate Upper Shelf (to suit 1200mm bench) 50H x 1200W x 300Dmm	BIUS3012PLXX	£116.91
B	Laminate Upper Shelf (to suit 1500mm bench) 50H x 1500W x 300Dmm	BIUS3015PLXX	£138.77
B	Laminate Upper Shelf (to suit 1800mm bench) 50H x 1800W x 300Dmm	BIUS3018PLXX	£160.62
C	Peg Back Panel (to suit 1500mm bench) 500H x 450W x 30Dmm	BIBPPEG15LXX	£67.74
C	Peg Back Panel (to suit 1200 & 1800mm bench) 500H x 545W x 30Dmm	BIBPPEG18-12	£71.02
D	Louvre Back Panel (to suit 1500mm bench) 500H x 450W x 30Dmm	BIBPLOV15LXX	£67.74
D	Louvre Back Panel (to suit 1200 & 1800mm bench) 500H x 545W x 30Dmm	BIBPLOV18-12	£71.02
E	Magnetic Back Panel (to suit 1500mm bench) 500H x 450W x 30Dmm	BIBPMAG15LXX	£67.74
E	Magnetic Back Panel (to suit 1200 & 1800mm bench) 500H x 545W x 30Dmm	BIBPMAG18-12	£71.02
F	Shelf Dividers (Pack of 5) - to be fitted to the Upper Shelf	BIDIVPK5LXXX	£60.10
G	Modular Half Shelf (to suit 1200mm bench) 50H x 600W x 150Dmm	BIMDS1200PLX	£85.23
G	Modular Half Shelf (to suit 1500mm bench) 50H x 500W x 150Dmm	BIMDS1500PLX	£78.67
G	Modular Half Shelf (to suit 1800mm bench) 50H x 600W x 150Dmm	BIMDS1800PLX	£85.23



Binary Workbench Accessories			
Key	Description	Model	Price
H	Modular Bin Rail (to suit 1200mm bench) 100H x 600W x 30Dmm (containers sold separately)	BIBINRL12LXX	£30.59
H	Modular Bin Rail (to suit 1500mm bench) 100H x 500W x 30Dmm (containers sold separately)	BIBINRL15LXX	£34.96
H	Modular Bin Rail (to suit 1800mm bench) 100H x 600W x 30Dmm (containers sold separately)	BIBINRL18LXX	£39.34
I	Above Bench Light Rail (to suit 1200mm bench)	BILIGHTRL12LX	£105.99
I	Above Bench Light Rail (to suit 1500mm bench)	BILIGHTRL15LX	£109.26
I	Above Bench Light Rail (to suit 1800mm bench)	BILIGHTRL18LX	£112.54
J	Above Bench LED Light (30 Watt)	BILED30WXXXX	£151.61
K	Worktop Service Duct - 130H x 410W x 55Dmm	BISERVDCTLXX	£85.00
L	Side Panel Support Arm (to be fitted with panels or storage shelf) - 530Lmm	BISUPARM530L	£81.95
M	Centre Panel Support Arm (to be fitted with panels or storage shelf) - 305Lmm	BISUPARM305L	£74.30
N	Side Peg Board (to be fitted to panel support arm) 440H x 290W x 30Dmm	BISPPEG4429L	£52.45
O	Side Louvre Panel (to be fitted to panel support arm) 440H x 290W x 30Dmm	BISPLOV4429L	£52.45
P	Side Magnetic Panel (to be fitted to panel support arm) 440H x 290W x 30Dmm	BISPMAG4429L	£50.26
Q	Container Storage Shelf (to be fitted to panel support arm) To suit 80H x 100W x 160Dmm plastic containers	BICONSH51LXX	£74.30
R	Monitor Support Arm (Centre Fitted) - 305Lmm	BIMONARM305L	£78.67
S	Monitor Support Arm (Side Fitted) - 530Lmm	BIMONARM530L	£92.88
T	Adjustable Tilting Shelf (to suit 1200 & 1800mm bench)	BIADJSH18-12	£138.77
T	Adjustable Tilting Shelf (to suit 1500mm bench)	BIADJSH15LXX	£135.49

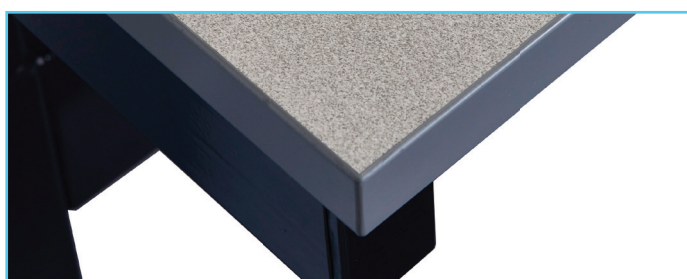


The Electric Height Adjustable Binary Workbench offers a premium solution for your workshop. Each bench comes fitted with a two-button adjustment switch which quickly & effortlessly adjusts the height of the bench.

- » Adjusts between 660mm & 1300mm high
- » Available in widths of 1200mm, 1500mm & 1800mm
- » All above bench accessories are fully modular & adjustable
- » Available with either a 30mm Laminate top or a 27mm Beech top
- » UDL of 240kg, evenly distributed

Information

COMPLETE YOUR WORKBENCH! ACCESSORIES SHOWN ON THE PREVIOUS PAGE



Workbench with Laminate Worktop (30mm Thick)

Size H x W x D mm	Model	Price
660/1300 x 1200 x 755	BIE661275PLX	£1472.89
660/1300 x 1500 x 755	BIE661575PLX	£1542.82
660/1300 x 1800 x 755	BIE661875PLX	£1621.49

Workbench with Solid Beech Worktop (27mm Thick)

Size H x W x D mm	Model	Price
660/1300 x 1200 x 755	BIE661275BLX	£1529.71
660/1300 x 1500 x 755	BIE661575BLX	£1593.08
660/1300 x 1800 x 755	BIE661875BLX	£1649.90



Premium Height Adjustment Module

Description	Model	Price
Memory function which can store up to 3 height positions	BIHADJ3MODXX	£51.90

Workbenches & Drawer Cabinets

Ergonomic Workbenches - Accessories

Information

**COMPLETE YOUR
WORKBENCH
SYSTEM!**



No.	Overall Size D x W mm	To Suit TPH bench length	Standard Model	Price
1	Standard Version			
	1115 Length	1200	BP 120	£60.33
	1415 Length	1500	BP 150	£74.93
	1715 Length	1800	BP 180	£81.74
	ESD Version			
	1115 Length	1200	BP 120 ESD	£77.46
	1415 Length	1500	BP 150 ESD	£89.88
2	1715 Length	1800	BP 180 ESD	£92.03
	Standard Version			
	310 x 1200	1200	SH 120	£162.18
	310 x 1500	1500	SH 150	£171.62
	310 x 1800	1800	SH 180	£178.93
	ESD Version			
	310 x 1200	1200	SH 120 ESD	£237.39
3	310 x 1500	1500	SH 150 ESD	£269.47
	310 x 1800	1800	SH 180 ESD	£293.55
	1200 Length	1200	KT 120	£177.21
	1500 Length	1500	KT 150	£180.37
	1800 Length	1800	KT 180	£183.56
4	1500 Length - Bar	1500	SPR 150	£48.01
	1800 Length - Bar	1800	SPR 180	£54.01
	430 x 120	1200, 1500 & 1800	TNL500W	£357.98
5	900 x 120	1200, 1500 & 1800	TNL900	£503.82
	1180 x 120	1200, 1500 & 1800	TNL1200	£556.84
	1160	1200	ELTPH12-P04	£265.51
5	1460	1500	ELTPH15-P04	£253.50
	1760	1800	ELTPH18-P04	£266.53

1) Bin Rail BP

- » For picking/stacking bins
- » Aluminium profile
- » Load capacity: 15kg
- » For TPH bench

2) Auxiliary Shelf SH

- » For more than one shelf on your bench
- » Load capacity: 50kg
- » For TPH bench

3) Tool & Lighting Support Kit KT

- » Includes 1 x C-profile & sliding hook
- » Order extra bar to mount tools & light - SPR
- » For TPH bench

4) LED NaturLite

- » Pre-wired 3 metre cable to UK plug
- » Built in diffuser

5) 4 x UK Power Sockets

- » UK BS 1363 power sockets
- » 1 neon on/off switch
- » 3M mains cable
- » 13A plug UK BS 1363
- » 1 USB, Data & RCD sockets available upon request



ESD Versions are
on an extended
lead time

Ergonomic Workbenches



Frames are epoxy powder coated steel in light grey RAL 7035. The worktops are either 25mm melamine-laminate or volume conductive melamine-laminate on particle board. ESD benches are earthed via a protective 1 mega-ohm resistor. Supplied knock down for self-assembly

Workbench TP

- » Height adjustable from 650 to 900mm (by allen key)
- » Can be also supplied as a line or angle extension
- » Steel frame in light grey RAL7035

Worktop D x W mm	Model	Price	ESD Model	Price
500 x 700	TP 507	£293.55	TP 507 ESD	£309.99
500 x 1000	TP 510	£321.00	TP 510 ESD	£376.85
700 x 1000	TP 710	£342.55	TP 710 ESD	£430.13
700 x 1200	TP 712	£366.79	TP 712 ESD	£499.57
700 x 1500	TP 715	£389.83	TP 715 ESD	£545.66
700 x 1800	TP 718	£418.90	TP 718 ESD	£646.57
900 x 1500	TP 915	£424.97	TP 915 ESD	£691.17
900 x 1800	TP 918	£461.55	TP 918 ESD	£794.89

Workbench with Shelf TPH

- » Construction as TP with upright profiles & a 310 mm deep laminate shelf
- » Upper shelf is height adjustable from 1080 to 1550mm

Worktop D x W mm	Model	Price	ESD Model	Price
700 x 1200	TPH 712	£584.04	TPH 712 ESD	£759.15
700 x 1500	TPH 715	£620.59	TPH 715 ESD	£839.26
700 x 1800	TPH 718	£688.04	TPH 718 ESD	£999.45
900 x 1500	TPH 915	£678.78	TPH 915 ESD	£957.98
900 x 1800	TPH 918	£724.62	TPH 918 ESD	£1123.93

Mobile Bench SAP

- » Construction as TP but with 100mm swivel castors, 2 braked
- » Height adjustable from 650 to 900mm
- » Lower shelf & push handles are optional extras

Worktop D x W mm	Model	Price	ESD Model	Price
500 x 700	SAP 507	£345.49	SAP 507 ESD	£400.51
700 x 1000	SAP 710	£409.66	SAP 710 ESD	£533.85
700 x 1500	SAP 715	£480.04	SAP 715 ESD	£674.60
Lower Shelf				
500 x 700	AT 507	£70.00	AT 507 ESD	£160.18
700 x 1000	AT 710	£110.07	AT 710 ESD	£292.13
Push Handle				
Push Handle for 500mm deep benches			PUSH 50	£79.26
Push Handle for 700mm deep benches			PUSH 70	£81.53

ESD protected workbenches are for use in the electronics industry & comply with EN61340-5-1



Workbench TP



Workbench with shelf TPH



Mobile Bench SAP with Push Handle

Workbenches & Drawer Cabinets

Heavy Duty Workbenches

- » Ideal for factories, laboratories, retail environments & schools etc
- » Heavy duty & robust construction
- » 40mm beech laminated veneer worktop
- » Drawer sets come complete with central locking & have a load capacity of 50kg per drawer



FROM STOCK



WTB12Z



WTB02Z



WTB04Z



WTB06Z



WTB08Z



WTB10Z



WTB13Z



WTB14Z



WTB15Z



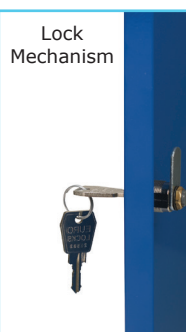
WTB16Z



Smooth Running Drawers



Cupboard



Lock Mechanism

Configuration	Overall Size L x W x H mm	Model	Price
Workbench	1800 x 650 x 840	WTB01Z	£417.05
	2000 x 650 x 840	WTB02Z	£443.60
Workbench with a Cupboard Unit	1800 x 650 x 840	WTB03Z	£531.85
	2000 x 650 x 840	WTB04Z	£560.20
Workbench with 2 x Cupboard Units	1800 x 650 x 840	WTB05Z	£658.00
	2000 x 650 x 840	WTB06Z	£687.85
Workbench with 3 Drawer Set	1800 x 650 x 840	WTB07Z	£671.00
	2000 x 650 x 840	WTB08Z	£710.60
Workbench with a 3 Drawer Set & a Cupboard Unit	1800 x 650 x 840	WTB09Z	£806.65
	2000 x 650 x 840	WTB10Z	£832.65
Workbench with 2 x 3 Drawer Sets	1800 x 650 x 840	WTB11Z	£955.30
	2000 x 650 x 840	WTB12Z	£978.00
Workbench with 3 x Cupboard Units	2000 x 650 x 840	WTB13Z	£832.65
Workbench with a 3 Drawer Set & 2 x Cupboard Units	2000 x 650 x 840	WTB14Z	£954.70
Workbench with 2 x 3 Drawer Sets & a Cupboard Unit	2000 x 650 x 840	WTB15Z	£1100.05
Workbench with 3 x 3 Drawer Sets	2000 x 650 x 840	WTB16Z	£1243.90

Super Heavy Duty Framework Benches

- » Heavy duty braced framework
- » 40mm multiplex or lino worktops
- » Maximum load capacity: 800kg UDL
- » Multiplex worktop: resin bonded layered beech ply with a cross laminated construction. A tough general duty worktop suitable for most applications.
- » Lino worktop: chipboard core with 3mm industrial linoleum top surface & plastic edge banding. Resistant to oils & greases.
- » Suspended cabinets with 75kg UDL capacity drawers with 100% extensions
- » Epoxy powder coated in grey & blue



41003082.16v

PRICES HELD



41003396.11v

Configuration	Overall Size L x D x H mm	Worktop Type	Model	Price
Frame Bench	1500 x 750 x 840	Multiplex	41003082.16v	£301.76
		Lino	41003084.16v	£338.64
	2000 x 750 x 840	Multiplex	41003178.16v	£370.50
		Lino	41003180.16v	£409.42

Configuration	Overall Size L x D x H mm	Worktop Type	Model	Price
Bench with 1 x 150mm Drawer	1500 x 750 x 840	Multiplex	41003396.11v	£592.89
		Lino	41003397.11v	£619.69
	2000 x 750 x 840	Multiplex	41003399.11v	£661.63
		Lino	41003400.11v	£689.59

Super Heavy Duty Storage Benches



41002055.11v

- » 40mm multiplex worktop
- » Storage framework allows easy cleaning
- » Maximum load cap: 800kg UDL
- » Integral cabinets with full extension 75kg U.D.L. capacity drawers



41002022.11v



41002025.11v



41002064.11v

Overall Size L x D x H mm	Drawers / Cupboards	Model	Price
1500 x 750 x 840	2 x 500mm cupboards each with adjustable shelves	41002022.11v	£773.11
2000 x 750 x 840	4 x 150mm drawers, 1 x 200mm drawer & 2 x 350mm cupboards	41002064.11v	£1239.15
1500 x 750 x 840	2 x 150mm drawers, 1 x 200mm drawer & 500mm cupboard with adjustable shelf	41002025.11v	£866.53
2000 x 750 x 840	2 x 500mm cupboards each with adjustable shelves, 2 x 150mm drawers & 1 x 200mm drawer	41002055.11v	£1121.55

Workbenches & Drawer Cabinets

Euroslide Superbench



manufactured



i Information

**ADD YOUR CABINET
FROM THE OPPOSITE
PAGE TO COMPLETE
YOUR WORKBENCH**

Beech Worktop



Laminate Worktop



Linoleum Worktop



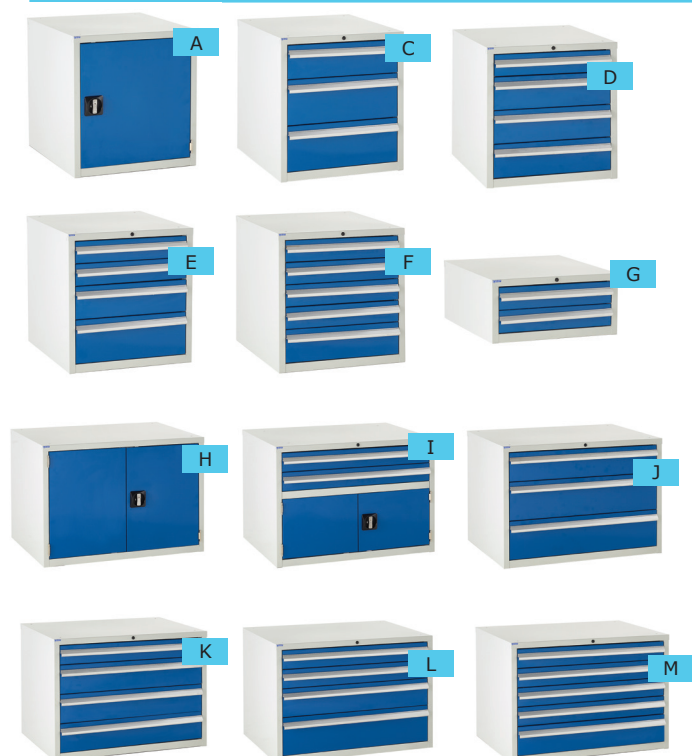
Steel Worktop



Overall Size H x W x D mm	Beech Top		Laminate Top		Linoleum Top		Steel Top	
	Model	Price	Model	Price	Model	Price	Model	Price
840 x 1200 x 750	BSE841275BLX	£429.79	BSE841275PLX	£450.51	BSE8412758LX	£450.51	BSE841275SLX	£431.70
840 x 1200 x 900	BSE841290BLX	£471.06	BSE841290PLX	£497.75	BSE8412908LX	£497.75	BSE841290SLX	£478.94
840 x 1500 x 750	BSE841575BLX	£547.20	BSE841575PLX	£552.08	BSE8415758LX	£552.08	BSE841575SLX	£534.53
840 x 1500 x 900	BSE841590BLX	£599.09	BSE841590PLX	£621.25	BSE8415908LX	£621.25	BSE841590SLX	£545.01
840 x 1800 x 750	BSE841875BLX	£600.50	BSE841875PLX	£622.50	BSE8418758LX	£622.50	BSE841875SLX	£573.82
840 x 1800 x 900	BSE841890BLX	£665.75	BSE841890PLX	£753.66	BSE8418908LX	£753.66	BSE841890SLX	£596.68

Euroslide Superbench - Drawer Cabinets

B



DOOR & DRAWER COLOUR OPTIONS

- Red
- Green
- Blue
- Dark Grey

specify when ordering

i Information

COMPLETE YOUR WORKBENCH WITH THESE CABINETS

Cabinet Size - 620H x 600W x 650D mm

Key	Description	Model	Price
A	Single Cupboard	EUC6760651	£163.84
B	2 x 100mm Drawers & Cupboard	EUC6760652	£377.74
C	1 x 150mm & 2 x 200mm Drawers	EUC6760653	£473.92
D	1 x 100mm & 3 x 150mm Drawers	EUC676065A	£549.69
E	2 x 100mm, 1 x 150mm & 1 x 200mm Drawers	EUC6760654	£551.05
F	4 x 100mm & 1 x 150mm Drawers	EUC676065C	£625.45
G	2 x 100mm Drawers (275mm High)	EUC276065DS	£300.87

Cabinet Size - 620H x 900W x 650D mm

Key	Description	Model	Price
H	Double Cupboard	EUC6790651	£227.09
I	2 x 100mm Drawers & Cupboard	EUC6790652	£417.86
J	1 x 150mm & 2 x 200mm Drawers	EUC6790653	£497.77
K	1 x 100mm & 3 x 150mm Drawers	EUC679065A	£573.54
L	2 x 100mm, 1 x 150mm & 1 x 200mm Drawers	EUC6790655	£574.90
M	4 x 100mm & 1 x 150mm Drawers	EUC679065C	£649.30

Above Bench Accessories

Key	Description	Model	Price
A	760mm Rear Support Posts	BESP760SXXXX	£71.84
A	1180mm Rear Support Posts	BESP1180SXXXX	£87.33
B	Upper Shelf 300mm Laminate for 1200 Bench	BEUS1200PXXX	£100.33
B	Upper Shelf 300mm Laminate for 1500 Bench	BEUS1500PXXX	£120.12
B	Upper Shelf 300mm Laminate for 1800 Bench	BEUS1800PXXX	£142.96
B	Upper Shelf 300mm Beech for 1200 Bench	BEUS1200BXXX	£116.13
B	Upper Shelf 300mm Beech for 1500 Bench	BEUS1500BXXX	£140.58
B	Upper Shelf 300mm Beech for 1800 Bench	BEUS1800BXXX	£170.93
C	Light/Tool Rail Support for 1200mm Bench	BERS1200XLXX	£75.09
C	Light/Tool Rail Support for 1500mm Bench	BERS1500XLXX	£80.76
C	Light/Tool Rail Support for 1800mm Bench	BERS1800XLXX	£83.59
D	3 Setting LED Light - 1200mm	BE3LED1200XX	£58.64
E	Combi Panel for 1200mm Bench	BECP4812I3XX	£151.78
E	Combi Panel for 1500mm Bench	BECP4815I3XX	£162.59
E	Combi Panel for 1800mm Bench	BECP4818I3XX	£180.14
F	Worktop service duct for 1200mm Bench	BESDWT122XX	£116.18
F	Worktop service duct for 1500mm Bench	BESDWT15XXXX	£119.01
F	Worktop service duct for 1800mm Bench	BESDWT18XXXX	£124.68
G	Post fitted service duct for 1200mm Bench	BESDP12XXXXXX	£127.51
G	Post fitted service duct for 1500mm Bench	BESDP15XXXXXX	£133.38
G	Post fitted service duct for 1800mm Bench	BESDP18XXXXXX	£142.23



i Information

COMPLETE YOUR WORKBENCH WITH THESE ACCESSORIES

Workbenches & Drawer Cabinets

Euroslide Cabinets



Supplied with 1 Galvanised shelf as standard

Description	Model	Price
Overall Cabinet Size - 825H x 600W x 650D mm		
Single Cupboard	EUC18260651	£194.22



Supplied with 1 Galvanised shelf as standard

Description	Model	Price
Overall Cabinet Size - 825H x 600W x 650D mm Drawer Sizes: 2 x 100mm & 1 x 500mm Cupboard		
2 Drawers & Cupboard	EUC18260652	£407.20



Description	Model	Price
Overall Cabinet Size - 825H x 600W x 650D mm Drawer Sizes: 1 x 150mm & 3 x 200mm		
4 Drawers	EUC1826065A	£606.84



Description	Model	Price
Overall Cabinet Size - 825H x 600W x 650D mm Drawer Sizes: 5 x 150mm		
5 Drawers	EUC1826065C	£686.22



Description	Model	Price
Overall Cabinet Size - 825H x 600W x 650D mm Drawer Sizes: 2 x 100mm, 2 x 150mm & 1 x 200mm		
5 Drawers	EUC18260655	£674.03



Description	Model	Price
Overall Cabinet Size - 825H x 600W x 650D mm Drawer Sizes: 4 x 100mm, 1 x 150mm & 1 x 200mm		
6 Drawers	EUC1826065E	£758.96



Description	Model	Price
Overall Cabinet Size - 825H x 600W x 650D mm Drawer Sizes: 7 x 100mm		
7 Drawers	EUC1826065V	£824.49

DOOR & DRAWER
COLOUR OPTIONS

Red

Green

Blue

Dark Grey

specify when ordering



i

Information

IDEAL FOR
STORING ALL
YOUR TOOLS



Description	Worktop Thickness	Model	Price
Worktop Options			
Beech	27mm	ESBEETOP6065	£75.04
Laminate	20mm	ESLAMTOP6065	£123.45
Tool Tray	24mm (lip)	ESTLTTOP6065	£28.76

Euroslide Cabinets



Supplied with 1 Galvanised shelf as standard

Description	Model	Price
Overall Cabinet Size - 825H x 900W x 650D mm		
Double Cupboard	EUC18290651	£251.84



Supplied with 1 Galvanised shelf as standard

Description	Model	Price
Overall Cabinet Size - 825H x 900W x 650D mm Drawer Sizes: 2 x 100mm & 1 x 500mm Cupboard		
2 Drawers & Double Cupboard	EUC18290653	£453.79



Description	Model	Price
Overall Cabinet Size - 825H x 900W x 650D mm Drawer Sizes: 1 x 150mm & 3 x 200mm		
4 Drawers	EUC1829065A	£630.03



Description	Model	Price
Overall Cabinet Size - 825H x 900W x 650D mm Drawer Sizes: 5 x 150mm		
5 Drawers	EUC1829065C	£722.07



Description	Model	Price
Overall Cabinet Size - 825H x 900W x 650D mm Drawer Sizes: 2 x 100mm, 2 x 150mm & 1 x 200mm		
5 Drawers	EUC18290655	£705.51



Description	Model	Price
Overall Cabinet Size - 825H x 900W x 650D mm Drawer Sizes: 4 x 100mm, 1 x 150mm & 1 x 200mm		
6 Drawers	EUC1829065E	£793.45



Description	Model	Price
Overall Cabinet Size - 825H x 900W x 650D mm Drawer Sizes: 7 x 100mm		
7 Drawers	EUC1829065V	£863.77

DOOR & DRAWER COLOUR OPTIONS

- Red
 - Green
 - Blue
 - Dark Grey
- specify when ordering*



Information

**IDEAL FOR
STORING ALL
YOUR TOOLS**



Description	Worktop Thickness	Model	Price
Worktop Options			
Beech	27mm	ESBEETOP9065	£112.30
Laminate	20mm	ESLAMTOP9065	£145.21
Tool Tray	24mm (lip)	ESTLTTOP9065	£40.58

Workbenches & Drawer Cabinets

System Tek Workbenches



DOOR & DRAWER COLOUR OPTIONS

- Red
 - Green
 - Blue
 - Dark Grey
- specify when ordering*



1 - Choose your Cabinet

Key	Description	Model	Price
A	Single Cupboard	EUC18260651	£194.22
B	2 x 100mm Drawers & Cupboard	EUC18260652	£407.20
C	1 x 150mm & 3 x 200mm Drawers	EUC1826065A	£606.84
D	5 x 150mm Drawers	EUC1826065C	£686.22
E	2 x 100mm, 2 x 150mm & 1 x 200mm Drawers	EUC18260655	£674.03
F	4 x 100mm, 1 x 150mm & 1 x 200mm Drawers	EUC1826065E	£758.96
G	7 x 100mm Drawers	EUC1826065V	£824.49

2 - Choose your Worktop

Description	Size H x W x D mm	Model	Price
Beech Top	27 x 1500 x 650	ESBEETOP1565	£180.56
Laminate Top	19 x 1500 x 650	ESLAMTOP1565	£201.77
Beech Top	27 x 1880 x 650	ESBEETOP1865	£216.39
Laminate Top	19 x 1880 x 650	ESLAMTOP1865	£202.65



2 - Choose your Accessories

Description	Model	Price
760mm Rear Support Posts	BESP760SXXXX	£71.84
1180mm Rear Support Posts	BESP1180XXXX	£87.33
Upper Shelf 300mm Laminate for 1500 Bench	BEUS1500PXXX	£120.12
Upper Shelf 300mm Laminate for 1800 Bench	BEUS1800PXXX	£142.96
Upper Shelf 300mm Beech for 1500 Bench	BEUS1500BXXX	£140.58
Upper Shelf 300mm Beech for 1800 Bench	BEUS1800BXXX	£170.93
Light/Tool Rail Support for 1500mm Bench	BERS1500XLXX	£80.76
Light/Tool Rail Support for 1800mm Bench	BERS1800XLXX	£83.59
3 Setting LED Light - 1200mm	BE3LED1200XX	£58.64
Louvred/Perforated Back Panel - 1500mm	BECP4815IXXX	£151.95
Louvred/Perforated Back Panel - 1800mm	BECP4818IXXX	£168.53
Louvred/Pin Back Panel - 1500mm	BELO4815IXXX	£144.51
Louvred/Pin Back Panel - 1800mm	BELO4818IXXX	£168.60
Combi Panel for 1500mm Bench	BECP4815I3XX	£162.59
Combi Panel for 1800mm Bench	BECP4818I3XX	£180.14
Worktop Service Duct 1500mm Bench	BESDWT15XXXX	£119.01
Post Fitted Service Duct 1500mm Bench	BESDP15XXXXXX	£133.38
Support Leg & Modesty Panel	E2LEGMOD6560	£84.14

Mobile Euroslide Cabinets



Mobile Cabinet Size - 980H x 600W x 650D mm

Key	Description	Model	Price
A	Cupboard	EUC9860651M	£343.32
B	2 x 100mm Drawers & Cupboard	EUC9860652M	£556.30
C	2 x 100mm, 2 x 150mm & 1 x 200mm Drawers	EUC9860655M	£802.40
D	4 x 100mm, 1 x 150mm & 1 x 200mm Drawers	EUC986065EM	£887.33
E	1 x 150mm & 3 x 200mm Drawers	EUC986065AM	£735.21
F	5 x 150mm Drawers	EUC986065CM	£814.58
G	7 x 100mm Drawers	EUC986065VM	£952.86

DOOR & DRAWER COLOUR OPTIONS

- Red
 - Green
 - Blue
 - Dark Grey
- specify when ordering*



manufactured



Description	Size H x W x D mm	Model	Price
Beech Top	27 x 600 x 650	ESBEETOP6065	£75.04
Laminate Top	20 x 600 x 650	ESLAMTOP6065	£123.45
Tool Tray	24 x 600 x 650	ESTLTTOP6065	£28.76

Workbenches & Drawer Cabinets

Drawer Cabinets

- » Robust re-inforced housing with up to 1 tonne overall capacity
- » Ergonomic handle with label strip & cover
- » Full range of drawer dividers available - *call for details*

- » 75kg UDL drawer capacity on 100% extension
- » Drawer blocking mechanism to prevent more than 1 drawer opening at one time
- » Epoxy powder coated in grey & blue



40019031.11v



40019035.11v

PRICES
HELD

Configuration	Overall Size W x D x H mm	Model	Price
1 x 100 & 1 x 175mm Drawers with a 400mm Cupboard	650 x 650 x 800	40019031.11v	£487.06

Configuration	Overall Size W x D x H mm	Model	Price
2 x 100 & 2 x 150 & 1 x 200mm Drawers	650 x 650 x 800	40019035.11v	£593.39



40020033.11v



40020041.11v

PRICES
HELD

Configuration	Overall Size W x D x H mm	Model	Price
1 x 100, 1 x 125 & 1 x 150mm Drawers with a 400mm Cupboard	800 x 650 x 900	40020033.11v	£721.44

Configuration	Overall Size W x D x H mm	Model	Price
5 x 100 & 2 x 150mm Drawers	800 x 650 x 900	40020041.11v	£906.66



40029031.11v



40029037.11v

PRICES
HELD

Configuration	Overall Size W x D x H mm	Model	Price
2 x 75, 1 x 100, 3 x 150 & 2 x 200mm Drawers	1050 x 750 x 1200	40029031.11v	£1275.95

Configuration	Overall Size W x D x H mm	Model	Price
4 x 100, 2 x 125, 3 x 150 & 2 x 200mm Drawers	1050 x 750 x 1600	40029037.11v	£1642.96

Team Leader Workstations

- » Designed for team leaders, supervisors or line managers
- » Fully welded steel frame
- » Ideal for standing at to improve health & fitness, but can be used in conjunction with an industrial stool or chair
- » Drawer sets come complete with central locking & have a load capacity of 50kg per drawer. Each drawer set can be fitted either on the left or right of the bench. Cupboard sets can only be positioned on the right hand side
- » Sloping top units add 140mm to the overall height
- » Red, blue & black sloping tops available - call for details
- » Red & black drawer & cupboard fronts available - call for details

Information

**IMPROVE HEALTH
& FITNESS BY
STANDING AT THESE
WORKSTATIONS**



TLF9210461LX



TLF9210462LX



TLF9210463LX



TLF9210464LX



TLS1010465LX



TLF9210466LX



TLF9210467LX



TLS1010468LX



TLF9210469LX

Description	Overall Size H x W x D mm	Workstation with Flat Top		Workstation with Sloping Top	
		Model	Price	Model	Price
Workstation Only	920 x 1000 x 460	TLF9210461LX	£218.99	TLS1010461LX	£218.99
	920 x 1000 x 600	TLF9210601LX	£231.22	TLS1010601LX	£231.22
Workstation with Single Drawer	920 x 1000 x 460	TLF9210462LX	£366.29	TLS1010462LX	£366.29
	920 x 1000 x 600	TLF9210602LX	£378.53	TLS1010602LX	£378.53
Workstation with 2 x Single Drawers	920 x 1000 x 460	TLF9210463LX	£513.60	TLS1010463LX	£513.60
	920 x 1000 x 600	TLF9210603LX	£525.84	TLS1010603LX	£525.84
Workstation with Cupboard	920 x 1000 x 460	TLF9210464LX	£350.97	TLS1010464LX	£350.97
	920 x 1000 x 600	TLF9210604LX	£386.05	TLS1010604LX	£386.05
Workstation with Single Drawer & Cupboard	920 x 1000 x 460	TLF9210465LX	£498.28	TLS1010465LX	£498.27
	920 x 1000 x 600	TLF9210605LX	£510.51	TLS1010605LX	£510.51
Workstation with Triple Drawer	920 x 1000 x 460	TLF9210466LX	£498.69	TLS1010466LX	£498.69
	920 x 1000 x 600	TLF9210606LX	£510.92	TLS1010606LX	£510.92
Workstation with Triple Drawer & Single Drawer	920 x 1000 x 460	TLF9210467LX	£646.00	TLS1010467LX	£646.00
	920 x 1000 x 600	TLF9210607LX	£658.23	TLS1010607LX	£658.23
Workstation with Double Cupboard	920 x 1000 x 460	TLF9210468LX	£440.87	TLS1010468LX	£440.87
	920 x 1000 x 600	TLF9210608LX	£453.11	TLS1010608LX	£453.11
Workstation with Triple Drawer & Cupboard	920 x 1000 x 460	TLF9210469LX	£630.67	TLS1010469LX	£630.67
	920 x 1000 x 600	TLF9210609LX	£642.90	TLS1010609LX	£642.90

Workbenches & Drawer Cabinets

Flat & Sloping Top Workstations

- » Ideal for paperwork based environments including goods inwards, despatch & assembly areas.
- » Available fitted with lockable storage drawers, open fronts & powder coated adjustable shelves
- » Sloping top available for ease of use as a writing station
- » Available with various accessories including extra shelves, ringbinder holder, perforated back panel & magnetic back panel - please call for details

DOOR/DRAWER COLOUR OPTIONS

- Blue
- Light Grey

specify when ordering



DW119245DS



DW989245DS



Drawer & Shelf Workstations

Description	Overall Size H x W x D mm	Model	Price
Flat Top	980 x 920 x 450	DW989245DS	£359.28
Sloping Top	1100 x 920 x 450	DW119245DS	£383.99

IT Workstation

- » All in one storage for industrial computer workstations - ideal for industrial environments
- » Includes Workstation, internal shelves, keyboard pull out shelf, sloping top & lockable monitor box



DOOR/DRAWER COLOUR OPTIONS

- Blue
- Light Grey

specify when ordering

ITCW139245

Overall Size H x W x D mm	Model	Price
1580 x 920 x 450	ITCW139245	£617.33



DW989245DD



DW119245SD

Single or Double Drawer Workstations

Drawer Type	Description	Overall Size H x W x D mm	Model	Price
Single	Flat Top	980 x 920 x 450	DW989245SD	£549.77
Single	Sloping Top	1100 x 920 x 450	DW119245SD	£574.48
Double	Flat Top	980 x 920 x 450	DW989245DD	£461.58
Double	Sloping Top	1100 x 920 x 450	DW119245DD	£486.29

Desk Converter

- » **Ideal for your workshop or production department**
- » Simply place on a surface & enjoy the flexibility of standing or sitting at your desk
- » A pneumatic air cylinder allows smooth adjustments from sit to stand in mere seconds, bringing the maximum height of 620mm above the desktop
- » The ergonomic two-tier design offers a spacious 32-inch (813mm) top shelf for monitors & a second shelf for a mouse/keyboard
- » Meets ANSI/BIFMA standards
- » Chamfered keyboard shelf edge for extra operator comfort

i Information

**SIGNIFICANTLY
IMPROVE YOUR
POSTURE WHILST
WORKING**

**LOWER
PRICE**



DC831L Raised



DC831L Lowered



DC831L

**3 day
delivery**

Overall Size H x W x D mm	Top Shelf Size W x D mm	Bottom Shelf Size W x D mm	Base Size W x D mm	Model	Price
146/620 x 813 x 596	813 x 349	699 x 248	813 x 596	DC831L	£325.00

Mobile Work Benches



WTP12Y



WTS30Y



WTP42Y



**FROM ONLY
£554.40**



WTS20Y

- » Strong welded construction
- » Worktops have a steel retaining lip
- » Constructed from 40mm steel square section
- » Mobile, on 2 fixed, 2 swivel braked 100mm nylon castors
- » Tubular steel push handle to aid manoeuvrability
- » Bottom shelf comes complete with a 40mm surround to 3 sides & a 40mm drop edge to the front

Description	Overall Size W x D x H	2mm Steel Work Top			18mm Plywood Work Top		
		Weight	Model	Price	Weight	Model	Price
Mobile Work Bench	1130 x 670 x 1000 mm	39 kg	WTS10Y	£554.40	49 kg	WTP12Y	£620.55
Mobile Work Bench with Single Drawer		50 kg	WTS20Y	£662.15	60 kg	WTP22Y	£779.60
Mobile Work Bench with Cupboard		55 kg	WTS30Y	£654.15	65 kg	WTP32Y	£774.65
Mobile Work Bench with Single Drawer & Cupboard		66 kg	WTS40Y	£816.05	76 kg	WTP42Y	£935.55