




Fort Secure Access

Safety, Strength & Durability

WHY CHOOSE FORT ACCESS STEPS?

- ✓ Triple welded for maximum safety on all treads
- ✓ Powder coated for a durable finish
- ✓ Tested in excess of the load capacity

ARE YOUR WAREHOUSE STEPS CERTIFIED TO EN 131?

Following the introduction of part 7 to the EN 131 standard there is growing interest in tested warehouse steps. Heavy duty warehouse steps were previously covered within the European BGI637 standard and this standard was effectively incorporated into the scope of EN 131-7 in September 2013. This, together with the previous levels of parts 1 to 3 of the EN 131 standard, has defined criteria for design, test and certification across a wide spectrum of step units. We have a vast range of UK manufactured steps which are tested to the EN 131 standard and the EN 14183 standard and users are becoming increasingly interested in using products that have the benefit of conformance and certification. **No longer can manufacturers & suppliers say that there is no British standard.**

We have been the only UK manufacturer of Safety Steps which are accredited to the European GS & DGUV Standard for many years and elements of these relevant standards have been incorporated into our design and test criteria for all of our UK manufactured steps. This is so we can ensure that the necessary levels of product strength, durability and stability are achieved. Our manufacturing processes all take place under controlled conditions conforming to BS EN ISO 9001:2015 ensuring product conformity is verified.

Fort® Handy Steps

- » Strong steel frame
- » Nestable, lightweight static steps
- » All weather non-slip injection moulded treads



HS302Z



HS301Z



All weather, non-slip, injection moulded treads



HS312Z

No. of Treads	Overall Size H x W x D mm	Weight kg	Model	Price 1 Off	Price (each) 2+
1	285 x 400 x 400	3	HS301Z	£76.70	£69.50
2	405 x 415 x 730	5	HS302Z	£118.40	£112.65
2 with post	1400 x 415 x 730	5.5	HS312Z	£143.25	£137.50

Fort® Stable BS EN 14183 Steps

- » **Certified to BS EN 14183**
- » Platform size: 200D x 396W mm
- » Open mesh treads facilitate safe use with muddy boots & in dirty environments
- » Robust, ergonomic & heavy duty grey rubber non-marking grounding feet make these units extremely stable



GS3002G
Galvanised
Finish

GS3113M
In Use

Why Choose Me?

- ✓ Equipment for low level access is important for comfort & safety
- ✓ Open mesh treads & a galvanised option mean these units can be used in most environments



GS3013M

Description	Platform Height mm	Overall Size H x W x D mm	Weight kg	Painted Finish		Galvanised Finish	
				Model	Price	Model	Price
2 Tread without Handrail	400	436 x 450 x 606	7	GS3002M	£98.35	GS3002G	£112.15
2 Tread with Handrail		990 x 450 x 606	7	GS3012M	£114.10	GS3012G	£131.45
2 Tread with Handrail & Rear Wheels		990 x 450 x 686	8	GS3112M	£127.90	GS3112G	£145.15
3 Tread without Handrail	600	636 x 450 x 806	11	GS3003M	£136.95	GS3003G	£157.65
3 Tread with Handrail		1190 x 450 x 806	11	GS3013M	£155.70	GS3013G	£179.85
3 Tread with Handrail & Rear Wheels		1190 x 450 x 886	12	GS3113M	£169.20	GS3113G	£193.40

Fort® Heavy Duty Handy Steps



Red, Blue or Light Grey

COLOUR OPTIONS

- Red
- Green
- Blue
- Light Grey
- Grey
- Yellow

specify when ordering



All weather, non-slip, injection moulded treads

Fort® Handy Steps



HS322Z

COLOUR OPTIONS

- Red
- Blue
- Yellow
- Grey

specify when ordering

- » **Certified to BS EN 14183**
- » Fitted with non-marking rubber feet & all weather non-slip injection moulded treads
- » Tread size: 400W x 200D mm

Description	Platform Height mm	Overall Size H x W x D mm	Wt kg	Model	Price
1 Tread	270	270 x 460 x 370	3	GS301Z	£82.45
1 Tread with post	270	1020 x 460 x 370	4	GS311Z	£125.90
2 Tread	430	430 x 520 x 550	5	GS302Z	£124.30
2 Tread with post	430	1330 x 520 x 550	6	GS312Z	£168.75

- » **Certified to BS EN 14183**
- » Fully welded tubular steel, with a looped handle
- » Fitted with non-marking rubber feet & all weather non-slip injection moulded treads
- » Handle height: 650mm

Platform Height mm	Overall Size H x W x D mm	Weight kg	Model	Price
400	1060 x 520 x 555	8	HS322Z	£157.60

Mobile, Safety & Warehouse Steps

Fort® Machine Steps

- » Platform size: 550 x 300mm
- » Fully welded construction with wide aluminium treads
- » The optional handrail & the wheel facility means that these units are quick & easy to position into the required place



Safety, Strength & Durability



MCS03Z

Wheels can be positioned inside the frame when not in use



MCS04Z, MCSHR4
& MCS01W

No. of Treads	Platform Height mm	Overall Size H x W x D mm	Weight kg	Model	Price
2	400	400 x 665 x 660	12	MCS02Z	£256.05
Optional Handrail to suit - MCS02Z				MCSHR2	£49.90*
3	600	600 x 715 x 800	16	MCS03Z	£338.55
Optional Handrail to suit - MCS03Z				MCSHR3	£55.55*
4	800	800 x 765 x 1010	20	MCS04Z	£433.95
Optional Handrail to suit - MCS04Z				MCSHR4	£62.30*
5	1000	1000 x 815 x 1220	25	MCS05Z	£528.35
Optional Handrail to suit - MCS05Z				MCSHR5	£68.10*
Optional Wheels - Factory Fitted				MCS01W	£71.35*

*prices applicable when ordering with the Fort Machine Steps.
Order charges will apply if ordered on their own.

Fort® Double Sided Steps

- » All weather non-slip injection moulded treads
- » Mobile models are fitted with 4 x 80mm sprung weight reactive retractable swivel castors
- » Tread size: 400 x 200mm

COLOUR OPTIONS

- Red
 - Blue
 - Green
 - Light Grey
- specify when ordering



HS3212



MS7312

Description	Platform Height	Overall Size H x W x D mm	Weight kg	Model	Price
Static 2 Tread w/out handle	500 mm	555 x 460 x 610	11	HS3212	£320.60
Static 2 Tread with handle	500 mm	1255 x 460 x 610	13	HS3312	£383.90
Mobile 2 Tread w/out handle	500 mm	575 x 490 x 610	11	MS7212	£489.10
Mobile 2 Tread with handle	500 mm	1245 x 490 x 610	13	MS7312	£552.85

Fort® Mobile Step - Tilt & Pull

- » Double sided tubular steel unit
- » Resilient anti-slip treads, two swivel castors & a handle on one side



HS9222



HS9222

HS9222

£229.05



Platform Height	Overall Size H x W x D mm	Tread Size mm	Weight kg	Model	Price
390 mm	1120 x 400 x 410	290 x 160	7	HS9222	£229.05

Fort® Buttress BS EN 14183 Steps

- » **Certified to BS EN 14183**
- » Graduated widths & a 45° easy slope comfort angle makes these steps strong, comfortable & stable
- » The 2 step unit is static on 4 landing feet but can easily be carried. 3-5 step units are mobile on 2 x 150mm rear wheels which enable 'tilt & pull'
- » Platform sizes: 2 tread - 400H x 630W x 250Dmm
3 tread - 600H x 600W x 250Dmm
4 tread - 800H x 550W x 250Dmm
5 tread - 1000H x 500W x 250Dmm
- » Available with 4 tread options; expanded steel mesh, phenolic non-slip, aluminium & galvanised



FROM ONLY
£161.00



Safety, Strength & Durability



BS9003R &
BS9103



BS9003R &
BS9103



BS9004A



BS9002M

Why Choose Me?

- ✓ Equipment for low level access is important for comfort & safety
- ✓ Extra large treads are ideal for comfort & stability over extended periods
- ✓ Optional handles allow for different applications

COLOUR OPTIONS

- Red
 - Blue
 - Grey
- specify when ordering

No. of Treads	Overall Size H x W x D mm	Wt kg	Painted Tubular Steel Steps								Galvanised Steps			
			Expanded Steel Mesh Tread		Phenolic Non-slip Tread		Aluminium Tread		Handrails to Suit		Galvanised Tread		Handrails to Suit	
			Model	Price	Model	Price	Model	Price	Model	Price	Model	Price	Model	Price
2	400 x 760 x 600	10	BS9002M	£161.00	BS9002R	£165.00	BS9002A	£166.80	BS9102	£41.50*	BS9002G	£174.55	BS9102G	£45.40*
3	600 x 900 x 800	18	BS9003M	£280.50	BS9003R	£288.30	BS9003A	£292.10	BS9103	£41.50*	BS9003G	£305.15	BS9103G	£45.40*
4	800 x 900 x 1000	24	BS9004M	£341.85	BS9004R	£349.60	BS9004A	£353.40	BS9104	£48.20*	BS9004G	£384.70	BS9104G	£52.55*
5	1000 x 900 x 1200	30	BS9005M	£401.20	BS9005R	£408.95	BS9005A	£412.90	BS9105	£54.60*	BS9005G	£436.95	BS9105G	£59.25*

*prices applicable when ordering with the Fort Buttress Steps. Order charges will apply if ordered on their own.

Stainless Steel Fort® Tilt & Pull Steps

- » Tread size: 400 x 160mm
- » Platform size: 400 x 200mm
- » Constructed from grade 304 stainless steel
- » Grey non-marking rubber wheels at the front of the units enable the steps to be tilted forwards & wheeled into position
- » Treads are covered in a resilient anti-slip surface

**FROM ONLY
£709.60**



Safety, Strength & Durability



SS2002

SS2004

SS2003

No. of Treads	Platform Height mm	Overall Size H x W x D mm	Weight kg	Model	Price
2	500	1055 x 455 x 620	10	SS2002	£709.60
3	750	1300 x 480 x 790	12	SS2003	£1039.70
4	1000	1700 x 550 x 980	16	SS2004	£1300.85

Fort® Arrow BS EN 131 Professional Stainless Steel Steps

- » **Certified to BS EN 131 Professional**
- » Manufactured from grade 304 tubular stainless steel with non-slip tread plate
- » Units are easy to manoeuvre on the 2 wheels - simply use the handles to lift the front & wheel into position
- » A retro fit grip lift mechanism is available - see page 477 for details
- » Tread size: 500W x 150Dmm
- » Platform size: 500W x 300Dmm
- » 2 x 150mm nylon wheels
- » 600mm high rear handrail



Safety, Strength & Durability



No. of Treads	Platform Height mm	Overall Size H x W x D mm	Weight kg	Model	Price
3	750	1450 x 640 x 1110	27	GS0603S	£1260.25
4	1000	1700 x 670 x 1220	30	GS0604S	£1543.15
5	1250	1950 x 700 x 1535	34	GS0605S	£1742.40
6	1500	2200 x 730 x 1745	38	GS0606S	£2027.90
7	1750	2450 x 760 x 1955	43	GS0607S	£2478.40
8	2000	2700 x 790 x 2165	49	GS0608S	£2716.90
Optional Grip Lift Mechanism (factory fitted)				MS0600	£104.60



GS0604S

Fort® Tilt & Pull Steps

- » Available as a standard version or as a model which is Certified to BS EN 14183
- » Tread size: 400 x 150mm
- » Top tread size: 400 x 200mm
- » Wheels fitted at front enabling the steps to be tilted forwards
- » Fitted with rubber feet & 2 x 75mm grey rubber tyred wheels
- » Standard version fitted with resilient anti-slip treads with tread clamps. Available in blue only.
- » BS EN 14183 version is fitted with phenolic non-slip treads. Frame available in red, blue, yellow or green - please specify when ordering

FROM ONLY

£165.60



Safety, Strength & Durability



**BS EN 14183
COLOUR
OPTIONS**

- Red
- Blue
- Yellow
- Green

specify when ordering



BS EN 14183 Model
GS2003R



BS EN 14183 Model
GS2004R



**WS2002, WS2003
& WS2004**

Resilient anti-slip treads with tread clamps

Resilient anti-slip treads which are clamped to the steel tread by a high visibility yellow strip to prevent the edges peeling



No. of Treads	Platform Height mm	Overall Size H x W x D mm	Weight kg	Model	Price
Standard Version - Anti-slip treads with Tread Clamps					
2	500	1050 x 470 x 630	10	WS2002	£165.60
3	750	1300 x 490 x 800	12	WS2003	£212.80
4	1000	1700 x 565 x 1005	16	WS2004	£284.50
BS EN 14183 Version - Phenolic Non-slip Treads					
2	470	1070 x 490 x 580	10	GS2002R	£251.00
3	705	1410 x 520 x 745	12	GS2003R	£334.45
4	940	1650 x 540 x 910	16	GS2004R	£443.40

Standard Model
WS2003 - Tilted

Mobile, Safety & Warehouse Steps

Fort® Easy Glide Domed Feet Steps

- » All weather non-slip injection moulded treads
- » Tread size: 400 x 200mm



MEG513



MEG515



COLOUR OPTIONS

- Red
- Blue
- Light Grey
- Green

specify when ordering



Safety, Strength & Durability



MEG514

Description	Platform Height mm	Platform W x D mm	Overall Size H x W x D mm	Weight kg	Model	Price
2 Tread with looped handrail	500	400 x 300	1210 x 560 x 640	10	MEG511	£353.50
2 Tread with full handrail	500	400 x 300	1210 x 560 x 640	11	MEG512	£368.55
3 Tread with full handrail	750	400 x 300	1450 x 560 x 840	14	MEG513	£413.60
4 Tread with full handrail	1000	400 x 300	1700 x 560 x 1040	17	MEG514	£474.65
5 Tread with full handrail	1250	450 x 300	1950 x 610 x 1360	21	MEG515	£572.95

Fort® Premier Range of Mobile Steps

- » All weather non-slip injection moulded treads
- » Tread size: 400 x 200mm



MS6014



MS6012 & MS002Z



MS6013



Safety, Strength & Durability



No. of Treads	Platform Height mm	Platform Size W x D mm	Overall Size H x W x D mm	Weight kg	Model	Price
2	508	400 x 200	605 x 560 x 640	7	MS6012	£388.05
3	762	400 x 400	1445 x 560 x 860	13	MS6013	£554.75
4	1016	400 x 400	1690 x 560 x 1060	20	MS6014	£711.95
5	1290	400 x 400	1955 x 615 x 1450	25	MS6015	£888.50
Optional extra safety post with handgrip for two step model - Height from floor: 1350 mm					MS002Z	£28.05*

*price applicable when ordering with the Fort Premier Range of Mobile Steps.
Order charges will apply if ordered on their own.

COLOUR OPTIONS

- Red
- Blue
- Light Grey
- Green

specify when ordering



MS6015

Fort® Domed Feet Steps

- » Tread size: 400W x 150D mm
- » These steps glide easily across floors, but once body weight is applied they stay firmly in position



WS512



WS510



BLUE ONLY

COLOUR OPTIONS

- Red
- Blue
- Yellow

specify when ordering



WS513



WS514



Safety, Strength & Durability



Specially designed, impact resistant, steel domed feet



The design incorporates a heavy duty pressed steel dome with an annular flange to facilitate the mounting of a moulded plastic rim which is shrink fitted for ultimate durability. The turned out rim gives significantly increased lateral strength & protection from side impact forces. These castors are fitted to the Fort Mobile Steps shown on pages 464 to 467

Resilient anti-slip treads with tread clamps

Resilient anti-slip treads which are clamped to the steel tread by a high visibility yellow strip to prevent the edges peeling



Why Choose Me?

- ✓ Bestselling range of domed feet steps
- ✓ Impact resistant domed feet that are welded, not bolted & do not break (subject to normal use)
- ✓ The anti-slip treads on the WS models have the following advantages over rubber treads: Do not peel up; Are REACH compliant; Provide more grip when exposed to liquids



WS513



WS515

Description	Platform Height mm	Platform Size W x D mm	Overall Size H x W x D mm	Weight kg	Expanded Steel Mesh Treads		Anti-Slip Treads	
					Model	Price	Model	Price
2 Tread without handrail	500	400 x 300	580 x 560 x 575	8	WS510	£218.40	WS510	£234.70
2 Tread with looped handrail			1200 x 560 x 575	9	WS511	£254.00	WS511	£272.95
2 Tread with full handrail			1200 x 560 x 575	10	WS512	£267.40	WS512	£287.40
3 Tread with full handrail	750		1460 x 560 x 725	13	WS513	£314.20	WS513	£338.05
4 Tread with full handrail	1000		1710 x 560 x 875	16	WS514	£371.15	WS514	£398.45
5 Tread with full handrail	1250		1960 x 610 x 1025	21	WS515	£441.30	WS515	£473.80

Fort® 'Gamma' BS EN 131 Professional Steps



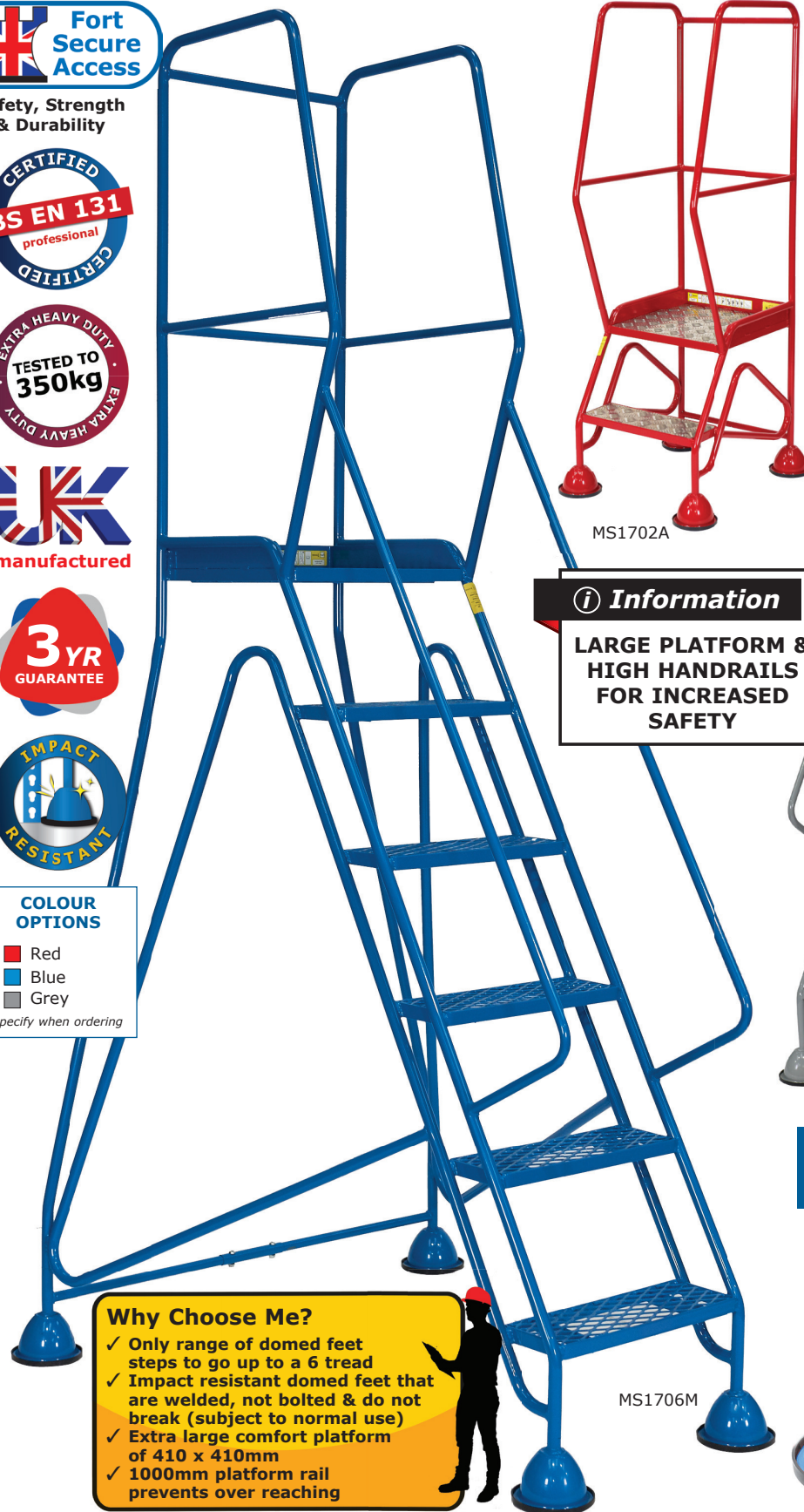
Safety, Strength
& Durability



COLOUR OPTIONS

- Red
- Blue
- Grey

specify when ordering



MS1702A

Information

**LARGE PLATFORM &
HIGH HANDRAILS
FOR INCREASED
SAFETY**



MS1704R

MS1706M

Why Choose Me?

- ✓ Only range of domed feet steps to go up to a 6 tread
- ✓ Impact resistant domed feet that are welded, not bolted & do not break (subject to normal use)
- ✓ Extra large comfort platform of 410 x 410mm
- ✓ 1000mm platform rail prevents over reaching

Specially designed, impact resistant, steel domed feet



The design incorporates a heavy duty pressed steel dome with an annular flange to facilitate the mounting of a moulded plastic rim which is shrink fitted for ultimate durability. The turned out rim gives significantly increased lateral strength & protection from side impact forces. These castors are fitted to the Fort Mobile Steps shown on pages 464 to 467

No of Treads	Platform Height mm	Overall Size H x W x D mm	Weight kg	Expanded Steel Mesh Treads		Phenolic Treads		Aluminium Treads	
				Model	Price	Model	Price	Model	Price
2	500	1500 x 570 x 670	18	MS1702M	£399.60	MS1702R	£407.90	MS1702A	£432.65
3	750	1750 x 610 x 830	22	MS1703M	£448.55	MS1703R	£460.10	MS1703A	£473.40
4	1000	2000 x 760 x 1000	26	MS1704M	£508.40	MS1704R	£523.30	MS1704A	£541.50
5	1250	2250 x 930 x 1120	29	MS1705M	£587.25	MS1705R	£605.50	MS1705A	£625.35
6	1500	2500 x 1100 x 1280	33	MS1706M	£660.30	MS1706R	£681.90	MS1706A	£701.75

Fort® Easy Glide Range of Mobile Steps

- » **Certified to BS EN 131 Professional**
- » Expanded steel mesh treads or all weather, non-slip, injection moulded treads
- » Tread size: 400 x 200mm



BLUE ONLY



GSE513

**FROM ONLY
£372.20**

COLOUR OPTIONS

- Red
- Blue
- Light Grey
- Green

specify when ordering



Safety, Strength & Durability



GSE514



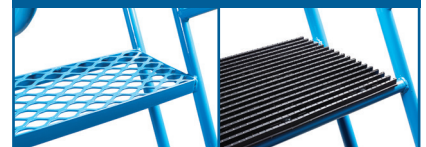
GSE512M

Specially designed, impact resistant, steel domed feet



The design incorporates a heavy duty pressed steel dome with an annular flange to facilitate the mounting of a moulded plastic rim which is shrink fitted for ultimate durability. The turned out rim gives significantly increased lateral strength & protection from side impact forces. These castors are fitted to the Fort Mobile Steps shown on pages 464 to 467

Expanded steel mesh treads or all weather, non-slip, injected moulded treads



Why Choose Me?

- ✓ Impact resistant domed feet that are welded, not bolted & do not break (subject to normal use)
- ✓ All weather, non-slip, injected moulded tread version available
- ✓ Design gives stability whilst enabling you to get close enough to prevent over-reaching



No. of Treads	Platform Height mm	Platform Size W x D mm	Overall Size H x W x D mm	Weight kg	Expanded Steel Mesh Treads		Injected Moulded Treads	
					Model	Price	Model	Price
2	500	400 x 300	1185 x 560 x 640	12	GSE512M	£372.20	GSE512	£385.00
3	750	400 x 300	1435 x 560 x 855	15	GSE513M	£417.95	GSE513	£435.05
4	1000	400 x 300	1685 x 570 x 1065	18	GSE514M	£479.05	GSE514	£500.60
5	1250	450 x 300	1935 x 610 x 1275	23	GSE515M	£583.00	GSE515	£606.00

Fort® Weight Reactive BS EN 131 Professional Mobile Steps

- » Certified to BS EN 131 Professional (GS7012 is certified to BS EN 14183)
- » All weather non-slip injected moulded treads
- » Tread size: 400W x 200D mm



COLOUR OPTIONS

- Red
 - Blue
- specify when ordering

FROM ONLY
£503.45



GS7013



GS7014



GS7012



Safety, Strength & Durability

All weather, non-slip, injection moulded treads



Spring loaded castors



Mobile on 4 spring loaded 80mm swivel castors. When body weight is applied the castors retract leaving the steps firm & safe on rubber feet

Description	Platform Height mm	Platform W x D mm	Overall Size H x W x D mm	Weight kg	Model	Price
2 Tread with handle	470	400 x 200	1330 x 510 x 620	15	GS7012	£503.45
3 Tread	735	400 x 400	1460 x 620 x 1010	17	GS7013	£624.70
4 Tread	980	400 x 400	1710 x 650 x 1250	23	GS7014	£789.05
5 Tread	1225	400 x 400	1960 x 675 x 1490	28	GS7015	£929.65

Why Choose Me?

- ✓ When in use the castors & feet give 8 points of contact with the floor to give extra stability
- ✓ All weather, non-slip, injected moulded tread version available



Fort® Weight Reactive Steps

>> Tread size: 400W x 150D mm



**FROM STOCK
ANTI-SLIP ONLY
5 & 6 TREAD UNITS
ARE ON EXTENDED
LEAD TIME**



WS7014



WM7013



WM7015

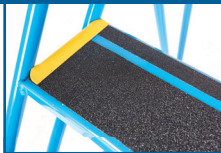
Spring loaded castors



Mobile on 4 spring loaded 75mm swivel castors. When body weight is applied the castors retract leaving the steps firm & safe on rubber feet

Resilient anti-slip treads with tread clamps.

Resilient anti-slip treads which are clamped to the steel tread by a high visibility yellow strip to prevent the edges peeling



Why Choose Me?

- ✓ When in use the castors & feet give 8 points of contact with the floor to give extra stability
- ✓ The anti-slip treads on the WS models have the following advantages over rubber treads: Do not peel up; Are REACH compliant; Provide more grip when exposed to liquids



WM7010



WS7011



WS7012



Safety, Strength & Durability



Description	Platform Height mm	Platform Size W x D mm	Overall Size H x W x D mm	Weight kg	Expanded Steel Mesh Treads		Anti-Slip Treads	
					Model	Price	Model	Price
2 Tread without handrail	500	400 x 300	580 x 540 x 510	10	WM7010	£311.60	WS7010	£335.50
2 Tread with looped handrail			1230 x 540 x 510	11	WM7011	£328.80	WS7011	£353.80
2 Tread with full handrail			1230 x 540 x 510	12	WM7012	£342.80	WS7012	£369.10
3 Tread with full handrail	750		1480 x 540 x 720	17	WM7013	£383.45	WS7013	£412.70
4 Tread with full handrail	1000		1730 x 550 x 870	20	WM7014	£434.50	WS7014	£467.00
5 Tread with full handrail	1250		1980 x 665 x 1020	25	WM7015	£478.50	WS7015	£514.20
6 Tread with full handrail	1500		2230 x 750 x 1170	28	WM7016	£525.05	WS7016	£563.90



SP1204A

'The Universal' Fort® Steps

- » **Certified to BS EN 14183**
- » 140mm deep treads
- » Large working platform size: 450W x 550Dmm
- » 1000mm high platform handrail with mid rail & kick rail
- » Mobile on 2 x swivel braked 125mm rubber castors & spring loaded 75mm weight reactive rubber castors. Brake facility on the 125mm rear castors gives extra security when working for long periods in one position
- » Safety chain facility with snap/lock carbine hooks at the entrance to the platform gives you greater safety when working above head height



COLOUR OPTIONS

- Yellow
 - Blue
- specify when ordering*

FROM ONLY
£460.00

TREAD OPTIONS

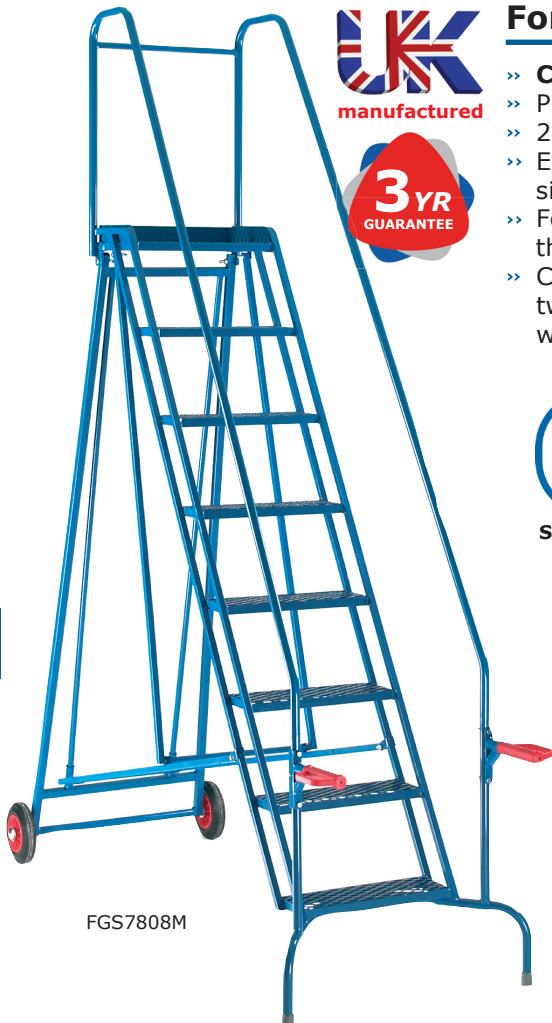


- Phenolic (non-slip)
- Aluminium (non-slip)
- Expanded Steel Mesh



Safety Chain

No of Treads	Overall Size H x W x D mm	Platform Height mm	Weight kg	Expanded Steel Mesh Treads		Phenolic Treads		Aluminium Treads	
				Model	Price	Model	Price	Model	Price
2	1480 x 720 x 950	480	24	SP1202M	£460.00	SP1202R	£485.00	SP1202A	£501.70
3	1720 x 740 x 1085	720	27	SP1203M	£518.60	SP1203R	£549.85	SP1203A	£566.50
4	1960 x 760 x 1220	960	31	SP1204M	£589.30	SP1204R	£624.85	SP1204A	£631.10



FGS7808M



Fort® Quick Folding BS EN 131 Professional Steps

- » **Certified to BS EN 131 Professional**
- » Platform size: 450W x 300Dmm
- » 2 x 200mm black rubber tyred wheels
- » Expanded steel mesh tread size: 450W x 145Dmm
- » Folds & unfolds without the use of nuts & bolts
- » Constructed from tubular steel with two handles at the front, fitted with knuckle guard hand grips



FROM ONLY
£852.95



FGS7805M
Folded

No of Treads	Platform Height mm	Overall Size - In Use H x W x D mm	Overall Size - Folded H x W x D mm	Weight kg	Model	Price
4	1000	1700 x 650 x 1310	930 x 650 x 1830	40	FGS7804M	£852.95
5	1250	1950 x 690 x 1520	930 x 690 x 2120	45	FGS7805M	£970.15
6	1500	2200 x 720 x 1730	930 x 720 x 2410	50	FGS7806M	£1078.90
7	1750	2450 x 770 x 1940	930 x 770 x 2700	55	FGS7807M	£1184.40
8	2000	2700 x 790 x 2150	930 x 790 x 2990	60	FGS7808M	£1290.60

Fort® 'Duplex' Weight Reactive Mobile Steps



MS5961M



MSD103



Safety, Strength & Durability



GS5941



- » Unique 'frame within a frame' design for maximum stability
- » Standard or BS EN 131 Professional version available
- » Fitted with 4 sprung retractable 100mm swivel castors
When body weight is added the castors retract, leaving the steps stable & safe on rubber feet

No of Treads	Platform Height mm	Overall Size H x W x D mm	Platform Size W x D mm	Tread Size W x D mm	Weight kg	Model	Price
1 Standard Version - Expanded Steel Mesh Treads Available in Blue with a Blue Inner Frame							
3	665	1585 x 480 x 740	335 x 205	335 x 132	17	MS5931M	£424.40
4	880	1800 x 480 x 870			21	MS5941M	£455.00
5	1195	2195 x 680 x 960	530 x 255	530 x 165	28	MS5951M	£589.50
6	1310	2310 x 680 x 1110			33	MS5961M	£625.65
2 Standard Version - Phenolic Non-slip Treads Available in Blue, Red or Light Grey with a Yellow Inner Frame - <i>please specify colour when ordering</i>							
3	645	1828 x 470 x 840	380 x 300	380 x 150	20	MSD103	£627.65
4	870	1828 x 470 x 840			24	MSD104	£669.60
5	1090	2310 x 660 x 1120	530 x 300	530 x 150	30	MSD105	£756.10
6	1310	2310 x 660 x 1120			40	MSD106	£817.00
3 BS EN 131 Professional Version - Phenolic Non-slip Treads Available in Blue, Red or Light Grey with a Yellow Inner Frame - <i>please specify colour when ordering</i>							
3	690	1780 x 560 x 790	380 x 300	380 x 150	30	GS5931	£719.00
4	920	2015 x 560 x 1000			35	GS5941	£818.80
5	1150	2240 x 760 x 1210	530 x 300	530 x 150	45	GS5951	£950.70
6	1380	2480 x 760 x 1420			50	GS5961	£1054.65

Why Choose Me? 'Frame within a Frame' weight reactive steps

When your body weight is applied the uniquely designed inner frame will lower, resting all 4 non-slip rubber feet on the ground. This immobilises the wheels giving maximum stability & safety



Castors sit on the floor making these units easily manoeuvrable



When body weight is applied the rubber feet sit on the floor to stop the unit from moving

Fort® Tilt 'N' Push Mobile Steps

- » Certified to BS EN 131 Professional version available
- » Features a large working top platform: 490 x 600mm
- » The steps have two handles at the front, fitted with knuckle guard hand grips for lifting. These units are then mobile on two fixed rear nylon 100mm castors
- » Platform rail height: 1000mm
- » Tread size: 490 x 160mm



**FROM ONLY
£783.90**

GS7815P



MS7806G

Optional Inward Opening Gate - MS700Z



MS7814P fitted with MS710Z



Safety, Strength & Durability

No of Treads	Platform Height mm	Overall Size H x W x D mm	Weight kg	Galvanised Units		Blue Painted Units	
				Model	Price	Model	Price
Standard Version							
3	750	1750 x 660 x 1235	43	MS7803G	£927.60	MS7813P	£783.90
4	1000	2000 x 660 x 1420	48	MS7804G	£1155.55	MS7814P	£997.70
5	1250	2250 x 660 x 1605	54	MS7805G	£1362.65	MS7815P	£1191.30
6	1500	2500 x 660 x 1790	60	MS7806G	£1558.85	MS7816P	£1373.15
Inward Opening Gate - factory fitted to the rear				MS700Z	£180.20	MS710Z	£165.25
Retro-fit Lifting Barrier (see page 481 for details)				SB781MS	£97.55	SB780MS	£81.10
BS EN 131 Professional Version							
3	750	1750 x 820 x 1235	43	GS7803G	£984.55	GS7813P	£836.75
4	1000	2000 x 820 x 1420	48	GS7804G	£1225.75	GS7814P	£1063.15
5	1250	2250 x 1020 x 1605	54	GS7805G	£1446.40	GS7815P	£1268.95
6	1500	2500 x 1120 x 1790	60	GS7806G	£1655.85	GS7816P	£1462.90
Inward Opening Gate - factory fitted to the rear				GS700Z	£180.20	GS710Z	£165.25
Retro-fit Lifting Barrier (see page 481 for details)				SB781GS	£97.55	SB780GS	£81.10

Fort® Dock Steps

- » **Certified to BS EN 14183**
- » Fitted with lift handles which incorporate knuckle guard hand grips & 2 x 150mm rubber tyred wheels which make these units extremely manoeuvrable
- » Open rear allows step through access to a loading bay or lorry etc
- » Tread depth: 145mm
- » Platform size: 400W x 300D mm



FROM STOCK



**FROM ONLY
£264.10**



Safety, Strength & Durability



Why Choose Me?

- ✓ Open rear allows easy step through access to loading bays & vehicles
- ✓ Great for loading & unloading
- ✓ Easy to manoeuvre & economical design



Open rear allows step through access to a Loading Bay or Lorry etc

No of Treads	Platform Height mm	Overall Size H x W x D mm	Expanded Steel Mesh Treads			Phenolic Non-slip Treads		
			Weight	Model	Price	Weight	Model	Price
Powder Coated Finish								
2	500	1210 x 480 x 685	16 kg	GSD702M	£264.10	17 kg	GSD702R	£272.00
3	750	1460 x 510 x 857	18 kg	GSD703M	£314.45	19 kg	GSD703R	£325.05
4	1000	1710 x 540 x 1020	20 kg	GSD704M	£374.20	21 kg	GSD704R	£388.95
Galvanised Finish								
2	500	1210 x 480 x 685	18 kg	GSD702G	£283.40	-	-	-
3	750	1460 x 510 x 857	20 kg	GSD703G	£339.60	-	-	-
4	1000	1710 x 540 x 1020	22 kg	GSD704G	£405.20	-	-	-



Fort® 'Wheel' BS EN 131 Professional Mobile Steps

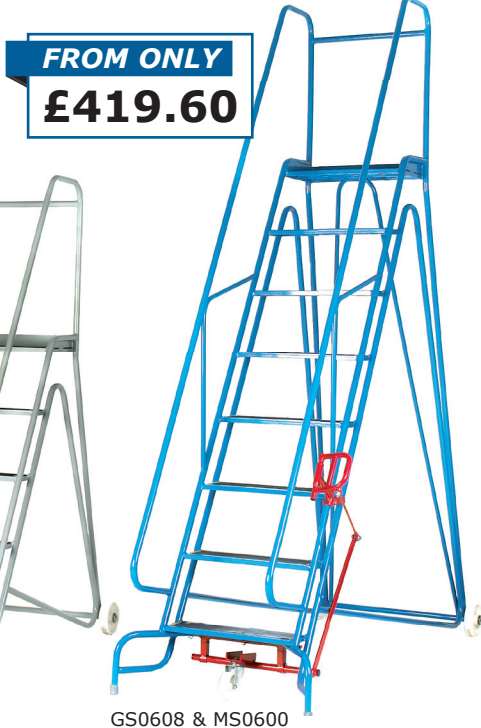


- » Certified to BS EN 131 Professional
- » Fitted with lift handles which incorporate knuckle guard hand grips & 2 x 150mm rubber tyred wheels which make these units extremely manoeuvrable
- » Platform size: 400W x 300D mm
- » Tread depth: 145mm



Safety, Strength & Durability

No of Treads	Platform Height mm	Overall Size H x W x D mm	Expanded Steel Mesh Treads			Phenolic Non-slip Treads		
			Weight	Model	Price	Weight	Model	Price
2	500	1210 x 540 x 820	18 kg	GSW702M	£260.05	19 kg	GSW702R	£273.30
3	750	1460 x 570 x 1032	20 kg	GSW703M	£310.95	21 kg	GSW703R	£332.80
4	1000	1710 x 600 x 1244	22 kg	GSW704M	£371.75	23 kg	GSW704R	£405.75
5	1250	1960 x 630 x 1456	24 kg	GSW705M	£432.15	25 kg	GSW705R	£482.65
6	1500	2210 x 660 x 1668	26 kg	GSW706M	£495.15	27 kg	GSW706R	£566.30
7	1750	2460 x 690 x 1880	28 kg	GSW707M	£571.00	29 kg	GSW707R	£663.55
8	2000	2710 x 720 x 2029	30 kg	GSW708M	£633.05	31 kg	GSW708R	£750.85



Fort® Arrow Mobile Steps

- » Certified to BS EN 131 Professional
- » Units are easy to manoeuvre on the 2 wheels - simply use the handles to lift the front & wheel into position
- » Resilient anti-slip treads
- » Tread size: 500W x 150Dmm
- » Platform size: 500W x 300Dmm
- » 600mm high rear handrail
- » 2 x 150mm nylon wheels



Safety, Strength & Durability

No of Treads	Platform Height mm	Overall Size H x W x D mm	Weight kg	Model	Price
3	750	1450 x 640 x 1110	26	GS0603	£419.60
4	1000	1700 x 670 x 1220	29	GS0604	£465.90
5	1250	1950 x 700 x 1535	32	GS0605	£534.15
6	1500	2200 x 730 x 1745	36	GS0606	£586.40
7	1750	2450 x 760 x 1955	41	GS0607	£670.35
8	2000	2700 x 790 x 2165	44	GS0608	£724.35
Optional Retro Grip Lift Mechanism - see page 477 for details				MS0600	£104.60



Fort® 'Spring' BS EN 131 Professional Mobile Steps

- » Certified to BS EN 131 Professional
- » Platform size: 400W x 300Dmm
- » Tread depth: 145mm



GSS702R

Spring loaded castors



Mobile on 2 spring loaded 75mm swivel castors & 2 x 150mm rubber tyred wheels. When body weight is applied the castors retract leaving the steps firm & safe on rubber feet



GSS704M



Safety, Strength
& Durability



FROM ONLY
£299.95



GSS708R

Why Choose Me?

- ✓ The tallest weight reactive step available, up to an 8 tread & 2m platform height
- ✓ Combines the flexibility and manoeuvrability of weight reactive sprung castors with the added height of a traditional warehouse step



No of Treads	Platform Height mm	Overall Size H x W x D mm	Expanded Steel Mesh Treads			Phenolic Non-slip Treads		
			Weight	Model	Price	Weight	Model	Price
2	500	1210 x 540 x 820	18 kg	GSS702M	£299.95	19 kg	GSS702R	£313.30
3	750	1460 x 570 x 1032	20 kg	GSS703M	£350.90	21 kg	GSS703R	£372.75
4	1000	1710 x 600 x 1244	22 kg	GSS704M	£411.60	23 kg	GSS704R	£445.90
5	1250	1960 x 630 x 1456	24 kg	GSS705M	£472.05	25 kg	GSS705R	£522.80
6	1500	2210 x 660 x 1668	26 kg	GSS706M	£535.15	27 kg	GSS706R	£606.25
7	1750	2460 x 690 x 1880	28 kg	GSS707M	£610.90	29 kg	GSS707R	£703.45
8	2000	2710 x 720 x 2029	30 kg	GSS708M	£673.00	31 kg	GSS708R	£790.80

Fort® 'Delta' BS EN 131 Professional Mobile Steps



- >> **Certified to BS EN 131 Professional**
- >> Platform size: 500W x 400D mm
- >> Tread size: 500W x 145D mm
- >> **2-6 Tread Units:** Mobile on 2 rear wheels 150mm dia & 2 front spring loaded castors to achieve weight reactive function. Units move freely when pushed (unmounted) & stand firmly on ground once they are in use
- >> **7-10 Tread Units:** Made mobile on 150mm wheels & the use of a unique grip lift mechanism facilitating movement on 75mm retractable castors
- >> Available with Expanded Steel Mesh, Phenolic Non-slip or Aluminium Treads



Safety, Strength & Durability



Why Choose Me?

- ✓ Combines the flexibility and manoeuvrability of weight reactive sprung castors with the biggest platform available on a weight reactive step - up to a 6 tread
- ✓ 7 tread and above features our unique grip lift mechanism for speed, ease & safety (preventing ascent in mobile mode)



No of Treads	Platform Height mm	Overall Size H x W x D mm	Weight kg	Expanded Steel Mesh Treads		Phenolic Non-slip Treads		Aluminium Treads	
				Model	Price	Model	Price	Model	Price
2	460	1460 x 700 x 670	22	MS1802M	£408.70	MS1802R	£417.00	MS1802A	£435.20
3	690	1690 x 720 x 855	26	MS1803M	£472.65	MS1803R	£485.80	MS1803A	£508.95
4	920	1920 x 750 x 1055	29	MS1804M	£514.55	MS1804R	£534.45	MS1804A	£564.15
5	1150	2150 x 840 x 1175	33	MS1805M	£558.20	MS1805R	£586.35	MS1805A	£621.10
6	1380	2380 x 1030 x 1315	41	MS1806M	£613.05	MS1806R	£646.15	MS1806A	£685.85
7	1610	2610 x 1160 x 1490	51	MS1807M	£718.45	MS1807R	£835.85	MS1807A	£799.50
8	1840	2840 x 1160 x 1630	63	MS1808M	£770.80	MS1808R	£911.45	MS1808A	£865.15
9	2070	3070 x 1160 x 1765	75	MS1809M	£1042.50	MS1809R	£1103.65	MS1809A	£1148.35
10	2300	3300 x 1160 x 1900	87	MS1810M	£1121.10	MS1810R	£1178.95	MS1810A	£1240.15

Fort® Atlas Steps

- » Platform size: 550W x 380Dmm
- » Tread depth: 145mm
- » Features our unique grip lift mechanism for speed, ease & safety (preventing ascent in mobile mode)
- » Mobile on 2 x 160mm rubber wheels & 2 x 100mm swivel nylon castors



Safety, Strength & Durability

**PLEASE CHECK THE OVERALL
HEIGHT BEFORE ORDERING**

Why Choose Me?

- ✓ Box section profile - more steel gives greater stability & strength
- ✓ Features our unique grip lift mechanism for speed, ease & safety (preventing ascent in mobile mode)
- ✓ 1000mm platform rail prevents over reaching



No of Treads	Platform Height mm	Overall Size H x W x D mm	Expanded Steel Mesh Treads		
			Weight	Model	Price
3	750	1750 x 690 x 810	32 kg	MS1203M	£442.35
4	1000	2000 x 690 x 870	36 kg	MS1204M	£508.65
5	1250	2250 x 780 x 1130	40 kg	MS1205M	£627.90
6	1500	2500 x 780 x 1290	44 kg	MS1206M	£723.75
7	1750	2750 x 880 x 1450	48 kg	MS1207M	£834.05
8	2000	3000 x 930 x 1610	52 kg	MS1208M	£894.25
9	2250	3250 x 980 x 1770	56 kg	MS1209M	£977.85
10	2500	3500 x 1030 x 1930	62 kg	MS1210M	£1122.85
11	2750	3750 x 1080 x 2090	68 kg	MS1211M	£1253.50
12	3000	4000 x 1130 x 2250	74 kg	MS1212M	£1369.75
13	3250	4250 x 1180 x 2410	87 kg	MS1213M	£1457.40
14	3500	4500 x 1230 x 2570	93 kg	MS1214M	£1609.70
15	3750	4750 x 1280 x 2730	99 kg	MS1215M	£1682.35

Mobile, Safety & Warehouse Steps

Fort® Heavy Duty 'Vantage' BS EN 131 Professional Mobile Steps

- » **Certified to BS EN 131 Professional**
- » Tread size: 490W x 160Dmm
- » Platform size: 540W x 500Dmm
- » Available with a choice of either phenolic non-slip treads or expanded steel mesh treads
- » Standard comfort ladder angle of 54°
- » Fitted with lever operated retractable front castors & a safety bar to deter access to the steps when they are in the mobile position
- » 6 step units & above are sent folded for delivery - easy to erect
- » Platform handrail height: 1000mm
- » Mobile on 2 x 200mm rubber wheels & 2 x 100mm swivel nylon castors



Optional **retro-fit lifting barrier** to the front (entry) of the platform of these steps. Also available for steps on pages 472 & 480

Model	Price
SB980GS	£81.10

PLEASE CHECK THE OVERALL HEIGHT BEFORE ORDERING



GS9805R & SG500Z

OPTIONAL SECURITY GATE

A Padlockable security gate (as shown above) can be factory fitted to the bottom of these steps

Model	Price
SG500Z	£223.80

Why Choose Me?

- ✓ **Box section profile - more steel gives greater stability & strength for industrial performance**
- ✓ **1000mm platform rail prevents over reaching**
- ✓ **Extra width at base gives even greater stability**



GS9808M
£1668.50



Safety, Strength & Durability

No of Treads	Platform Height mm	Overall Size H x W x D mm	Weight kg	Expanded Steel Mesh Treads		Phenolic Non-slip Treads	
				Model	Price	Model	Price
3	690	1690 x 780 x 954	25	GS9803M	£653.55	GS9803R	£666.80
4	920	1920 x 780 x 1121	35	GS9804M	£837.05	GS9804R	£852.40
5	1150	2150 x 910 x 1288	45	GS9805M	£933.60	GS9805R	£952.55
6	1380	2380 x 960 x 1425	55	GS9806M	£1199.00	GS9806R	£1219.35
7	1610	2610 x 1010 x 1622	65	GS9807M	£1450.15	GS9807R	£1470.70
8	1840	2840 x 1060 x 1789	75	GS9808M	£1668.50	GS9808R	£1694.05
9	2070	3070 x 1140 x 1956	86	GS9809M	£1923.90	GS9809R	£1951.85
10	2300	3300 x 1220 x 2130	96	GS9810M	£2157.45	GS9810R	£2186.50
11	2530	3530 x 1270 x 2290	111	GS9811M	£2526.20	GS9811R	£2559.10
12	2760	3760 x 1370 x 2457	127	GS9812M	£2794.95	GS9812R	£2830.00
13	2990	3990 x 1460 x 2650	142	GS9813M	£3321.45	GS9813R	£3359.80
14	3220	4220 x 1540 x 2791	158	GS9814M	£3676.75	GS9814R	£3717.30
15	3450	4450 x 1565 x 2975	173	GS9815M	£4071.80	GS9815R	£4114.45

Fort® Heavy Duty 'Vantage' Mobile Steps

- » Tread size: 490W x 165Dmm
- » Features our unique grip lift mechanism for speed, ease & safety (preventing ascent in mobile mode)
- » 6 step units & above are sent folded for delivery - Easy to erect
- » Platform handrail height: 1000mm
- » Mobile on 2 x 200mm rubber wheels & 2 x 100mm swivel nylon castors



Safety, Strength & Durability



Optional **retro-fit lifting barrier** to the front (entry) of the platform of these steps. Also available for steps on pages 472 & 480

Barrier only recommended for use with MS99 range due to the restricted area on the MS98 platform

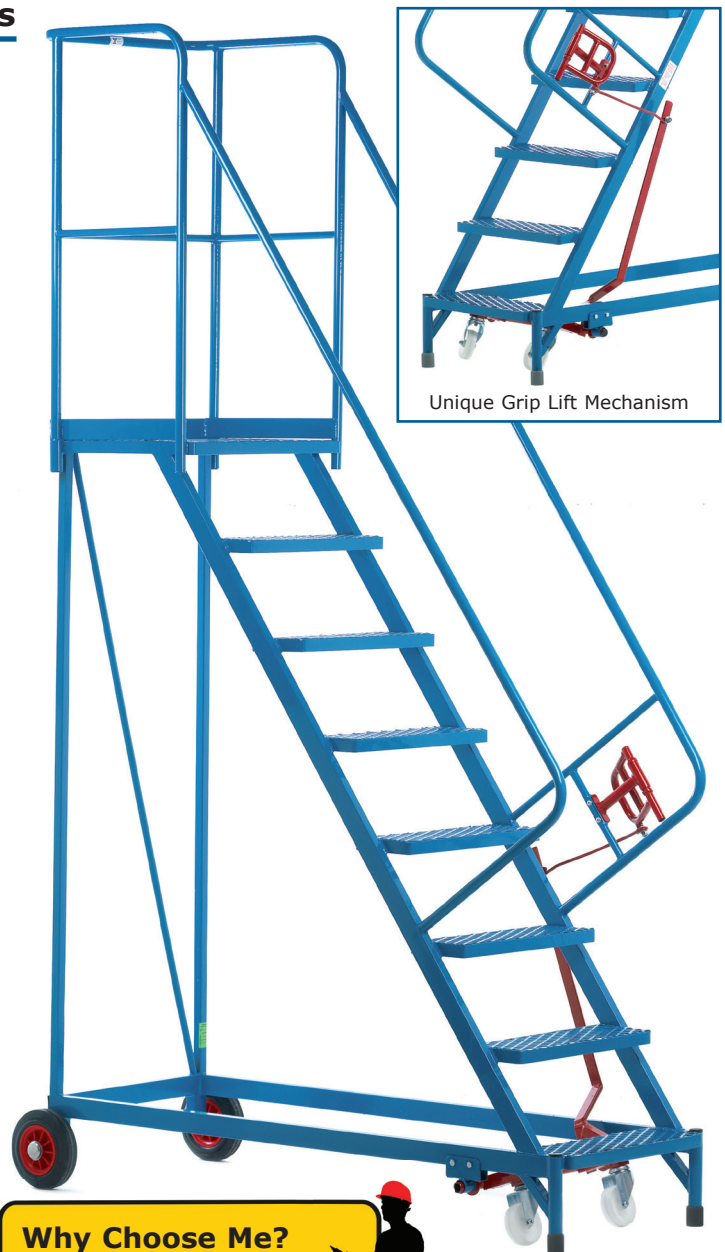
Model	Price
SB990MS	£81.10

OPTIONAL INWARD OPENING GATE

To allow access from the rear of the platform an inward opening gate can be factory fitted to the rear of the platform handrail



Model	Price
MS500Z	£176.10



Unique Grip Lift Mechanism

MS9808M

Why Choose Me?

- ✓ Box section profile - more steel gives greater stability & strength for industrial performance
- ✓ 1000mm platform rail prevents over reaching

PLEASE CHECK THE OVERALL HEIGHT BEFORE ORDERING

No of Treads	Weight kg	Platform Height mm	Platform Size: 460mm Depth x 540mm Width				Platform size: 590mm Depth x 540mm Width					
			Overall Size H x W x D mm	Expanded Steel Treads		Phenolic Non-slip Treads		Overall Size H x W x D mm	Expanded Steel Treads		Phenolic Non-slip Treads	
				Model	Price	Model	Price		Model	Price	Model	Price
3	37	690	1690 x 700 x 890	MS9803M	£546.80	MS9803R	£558.50	1690 x 700 x 1060	MS9903M	£591.05	MS9903R	£607.50
4	41	920	1920 x 700 x 1100	MS9804M	£678.45	MS9804R	£692.45	1920 x 700 x 1270	MS9904M	£722.60	MS9904R	£741.45
5	45	1150	2150 x 700 x 1200	MS9805M	£810.15	MS9805R	£826.65	2150 x 700 x 1370	MS9905M	£854.25	MS9905R	£875.35
6	49	1380	2380 x 700 x 1370	MS9806M	£941.65	MS9806R	£965.15	2380 x 700 x 1540	MS9906M	£987.45	MS9906R	£1015.85
7	53	1610	2610 x 700 x 1530	MS9807M	£1073.10	MS9807R	£1094.20	2610 x 700 x 1700	MS9907M	£1119.30	MS9907R	£1145.20
8	57	1840	2840 x 700 x 1700	MS9808M	£1204.75	MS9808R	£1228.30	2840 x 700 x 1870	MS9908M	£1252.55	MS9908R	£1280.90
9	65	2070	3070 x 700 x 1860	MS9809M	£1336.45	MS9809R	£1362.25	3070 x 700 x 2030	MS9909M	£1397.00	MS9909R	£1427.50
10	70	2300	3300 x 700 x 2020	MS9810M	£1495.15	MS9810R	£1523.35	3300 x 700 x 2190	MS9910M	£1555.95	MS9910R	£1588.90
11	76	2530	3530 x 800 x 2190	MS9811M	£1639.55	MS9811R	£1670.10	3530 x 800 x 2360	MS9911M	£1700.05	MS9911R	£1735.50
12	82	2760	3760 x 800 x 2360	MS9812M	£1805.75	MS9812R	£1838.65	3760 x 800 x 2530	MS9912M	£1866.15	MS9912R	£1903.85
13	89	2990	3990 x 1150 x 2520	MS9813M	£1982.60	MS9813R	£2017.95	3990 x 1150 x 2690	MS9913M	£2043.35	MS9913R	£2083.40
14	92	3220	4220 x 1230 x 2690	MS9814M	£2159.70	MS9814R	£2197.55	4220 x 1230 x 2860	MS9914M	£2220.20	MS9914R	£2262.65
15	95	3450	4450 x 1230 x 2850	MS9815M	£2336.85	MS9815R	£2376.95	4450 x 1230 x 3020	MS9915M	£2397.40	MS9915R	£2442.20
16	101	3680	4680 x 1230 x 2920	MS9816M	£2495.65	MS9816R	£2538.00	4680 x 1230 x 3190	MS9916M	£2556.20	MS9916R	£2603.35
17	108	3910	4910 x 1400 x 3180	MS9817M	£2654.55	MS9817R	£2699.15	4910 x 1400 x 3350	MS9917M	£2715.30	MS9917R	£2764.70
18	117	4140	5140 x 1400 x 3350	MS9818M	£2813.35	MS9818R	£2841.80	5140 x 1400 x 3520	MS9918M	£2874.10	MS9918R	£2925.90

Fort® Heavy Duty 'Elite' BS EN 131 Professional Mobile Steps



GS9309A

£2177.25

- » Certified to BS EN 131 Professional
- » Tread size: 490W x 128Dmm
- » Large working top platform: 540W x 590Dmm
- » Heavy duty steel framed mobile steps
- » Lifting step feature deters access until steps are safely grounded
- » Ladder angle of 60°
- » 6 step units & above are sent folded for delivery - easy to erect



Safety, Strength & Durability

PLEASE CHECK THE OVERALL HEIGHT BEFORE ORDERING

OPTIONAL EXTRAS

Tool Tray & Wire Mesh Baskets which hook onto the guard rail (also applies to page 481)



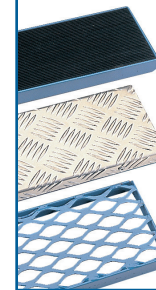
Optional retro-fit lifting barrier to the front (entry) of the platform of these steps. See page 481 for details.

3 to 5 Tread - SB931GS - **£81.10**
6 to 15 Tread - SB930GS - **£81.10**



GS9306M

TREAD OPTIONS



- Phenolic (non-slip)
- Aluminium (non-slip)
- Expanded Steel Mesh

Why Choose Me?

- ✓ Box section profile - more steel gives greater stability & strength for industrial performance
- ✓ 60° angle gives a shorter overall depth & smaller turning circle
- ✓ 1000mm platform rail prevents over reaching
- ✓ Extra width at base gives even greater stability



UNIQUE BOTTOM SWINGING STEP

This feature lifts the bottom step preventing access while the unit is mobile. Handle mechanism is fitted to the right hand side as standard

Description	Overall Size L x W x H mm	Model	Price
Wire Mesh Basket for GS93 Step	615 x 260 x 210	BSK93M	£135.30*
Tool tray for GS93 Step	615 x 260 x 210	BSK93T	£142.00*
Wire Mesh Basket for 490W mm Steps - page 481	650 x 260 x 210	BSK58M	£135.30*
Tool Tray for 490W mm Steps - page 481	650 x 260 x 210	BSK58T	£142.70*
Wire Mesh Basket for 770W mm Steps - page 481	895 x 260 x 210	BSK69M	£142.00*
Tool Tray for 770W mm Steps - page 481	895 x 260 x 210	BSK69T	£148.60*

*prices applicable when ordering with the Fort 'Elite' Steps. Order charges will apply if ordered on their own.

No of Treads	Weight kg	Platform Height mm	Overall Size H x W x D mm	Phenolic Non-slip Treads		Expanded Steel Treads		Aluminium Treads	
				Model	Price	Model	Price	Model	Price
3	44	690	1790 x 680 x 972	GS9303R	£831.10	GS9303M	£831.10	GS9303A	£1005.50
4	50	920	2020 x 680 x 1104	GS9304R	£920.70	GS9304M	£920.70	GS9304A	£1177.10
5	56	1150	2250 x 910 x 1237	GS9305R	£1009.60	GS9305M	£1009.60	GS9305A	£1366.25
6	68	1380	2480 x 960 x 1370	GS9306R	£1245.70	GS9306M	£1245.70	GS9306A	£1591.25
7	77	1610	2710 x 1010 x 1503	GS9307R	£1433.80	GS9307M	£1433.80	GS9307A	£1790.05
8	87	1840	2940 x 1060 x 1635	GS9308R	£1625.75	GS9308M	£1625.75	GS9308A	£1986.20
9	96	2070	3170 x 1110 x 1768	GS9309R	£1795.00	GS9309M	£1795.00	GS9309A	£2177.25
10	105	2300	3400 x 1160 x 1901	GS9310R	£2039.65	GS9310M	£2039.65	GS9310A	£2395.90
11	114	2530	3630 x 1210 x 2034	GS9311R	£2351.00	GS9311M	£2351.00	GS9311A	£2674.40
12	123	2760	3860 x 1260 x 2167	GS9312R	£2571.80	GS9312M	£2571.80	GS9312A	£2894.85
13	132	2990	4090 x 1370 x 2299	GS9313R	£3004.70	GS9313M	£3004.70	GS9313A	£3153.10
14	140	3220	4320 x 1420 x 2432	GS9314R	£3224.90	GS9314M	£3224.90	GS9314A	£3403.00
15	149	3450	4550 x 1425 x 2565	GS9315R	£3446.05	GS9315M	£3446.05	GS9315A	£3657.90

Fort® Heavy Duty 'Elite' Mobile Steps

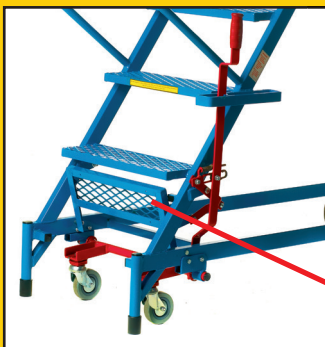
- » Large working top platform: either 600D x 540W mm or extra wide 600D x 820W mm
- » Wide *770mm tread models also available on 11-18 steps
- » Strongly constructed steps highly manoeuvrable & stable
- » The units incorporate kick boards on 3 sides of the platform
- » 6 step units & above are sent folded for delivery - easy to erect



Safety, Strength & Durability

Why Choose Me?

- ✓ Extra large platform sizes of 600x540 or 600x820mm



UNIQUE BOTTOM SWINGING STEP

This feature lifts the bottom step preventing access while the unit is mobile. This also helps prevent knocked shins

OPTIONAL EXTRAS



Optional retro-fit lifting barrier to the front (entry) of the platform of these steps. Also for steps on pages 472 & 480

Model	Price
SB580MS	£81.10

REAR INWARD OPENING GATE

To allow access from the rear of the platform an inward opening gate can be factory fitted to the rear of the platform handrail

To Suit	Model	Price
490mm Wide	MS500Z	£176.10
To Suit	Model	Price
770mm Wide	MS600Z	£191.45

TOOL TRAY/WIRE MESH BASKET

Please see page 480 for details



MS5822

£1445.30

MS5831

£1647.25

MS5822

MS5831

PLEASE CHECK THE OVERALL HEIGHT BEFORE ORDERING

No of Treads	Weight kg	Platform Height	Overall Size H x W x D mm	Phenolic Non-slip Treads		Expanded Steel Treads		Aluminium Treads	
				Model	Price	Model	Price	Model	Price
Platform Size: 600D x 540W mm				Tread Size: 160D x 490W mm					
3	25	690mm	1690 x 700 x 1060	MS5781	£707.10	MS5782	£707.10	MS5783	£827.70
4	35	920mm	1920 x 700 x 1270	MS5791	£874.90	MS5792	£874.90	MS5793	£1012.65
5	45	1150mm	2150 x 700 x 1370	MS5801	£963.25	MS5802	£963.25	MS5803	£1116.40
6	55	1380mm	2380 x 700 x 1540	MS5811	£1204.00	MS5812	£1204.00	MS5813	£1377.55
7	65	1610mm	2610 x 700 x 1700	MS5821	£1445.30	MS5822	£1445.30	MS5823	£1637.65
8	75	1840mm	2840 x 700 x 1870	MS5831	£1647.25	MS5832	£1647.25	MS5833	£1858.20
9	85	2070mm	3070 x 700 x 2030	MS5841	£1887.90	MS5842	£1887.90	MS5843	£2119.05
10	95	2300mm	3300 x 700 x 2190	MS5851	£2090.75	MS5852	£2090.75	MS5853	£2339.55
11	110	2530mm	3530 x 800 x 2360	MS5861	£2382.80	MS5862	£2382.80	MS5863	£2650.75
12	125	2760mm	3760 x 800 x 2530	MS5871	£2603.55	MS5872	£2603.55	MS5873	£2890.70
13	140	2990mm	3990 x 1150 x 2690	MS5881	£3099.20	MS5882	£3099.20	MS5883	£3411.80
14	155	3220mm	4220 x 1230 x 2860	MS5891	£3407.80	MS5892	£3407.80	MS5893	£3741.50
15	170	3450mm	4450 x 1230 x 3020	MS5901	£3758.15	MS5902	£3758.15	MS5903	£4112.75
16	185	3680mm	4680 x 1230 x 3190	MS5111	£4147.85	MS5112	£4147.85	MS5113	£4522.65
17	200	3910mm	4910 x 1400 x 3350	MS5121	£4562.70	MS5122	£4562.70	MS5123	£4968.45
18	215	4140mm	5140 x 1400 x 3520	MS5131	£5008.80	MS5132	£5008.80	MS5133	£5460.70
Platform Size: 600D x 820W mm				Tread Size: 160D x 770W mm					
*11	150	2530mm	3530 x 950 x 2360	MS6961	£2848.35	MS6962	£2848.35	MS6963	£3168.00
*12	170	2760mm	3760 x 950 x 2530	MS6971	£3142.70	MS6972	£3142.70	MS6973	£3484.50
*13	190	2990mm	3990 x 1150 x 2690	MS6981	£3704.55	MS6982	£3704.55	MS6983	£4075.30
*14	210	3220mm	4220 x 1230 x 2860	MS6991	£4093.70	MS6992	£4093.70	MS6993	£4489.05
*15	230	3450mm	4450 x 1230 x 3020	MS6901	£4517.95	MS6902	£4517.95	MS6903	£4937.20
*16	250	3680mm	4680 x 1230 x 3190	MS6911	£4936.70	MS6912	£4936.70	MS6913	£5386.60
*17	270	3910mm	4910 x 1400 x 3350	MS6921	£5390.35	MS6922	£5390.35	MS6923	£5871.20
*18	280	4140mm	5140 x 1400 x 3520	MS6931	£5883.20	MS6932	£5883.20	MS6933	£6394.85

Fort® Easy Steer Mobile Steps

- » Unique six wheel design enables the step to virtually turn within its own length
- » Fitted with lever operated retractable castors & a safety bar which deters access to the steps when in the mobile position
- » Handle mechanism is fitted to the right hand side as standard
- » Standard comfort ladder angle of 54°
- » Expanded steel mesh treads & platform
- » Folded for delivery - easy to erect
- » Tread size: 490W x 160Dmm
- » Platform size: 540W x 460Dmm
- » Platform handrail height: 1000mm
- » Wheels: 4 x 100mm fixed nylon castors
2 x 100mm swivel nylon castors

FROM ONLY
£1451.15



Safety, Strength & Durability

Why Choose Me?

- ✓ Unique six wheel design reduces the turning circle by circa 50%



ES9809M

PLEASE CHECK THE OVERALL HEIGHT BEFORE ORDERING

No of Treads	Platform Height mm	Overall Size H x W x D mm	Weight kg	Model	Price
7	1610	2610 x 720 x 1440	64	ES9807M	£1451.15
8	1840	2840 x 720 x 1600	74	ES9808M	£1653.10
9	2070	3070 x 720 x 1790	84	ES9809M	£1893.75
10	2300	3300 x 720 x 1950	94	ES9810M	£2096.55
11	2530	3530 x 820 x 2110	109	ES9811M	£2388.60
12	2760	3760 x 820 x 2270	124	ES9812M	£2590.65
13	2990	3990 x 1170 x 2430	139	ES9813M	£3085.80
14	3220	4220 x 1250 x 2590	154	ES9814M	£3394.55
15	3450	4450 x 1250 x 2750	169	ES9815M	£3737.40
16	3680	4680 x 1250 x 2910	184	ES9816M	£4096.40
17	3910	4910 x 1420 x 3070	199	ES9817M	£4511.90
18	4140	5140 x 1420 x 3230	214	ES9818M	£4957.80



Fort® Wide Tread 'Spartan' Mobile Steps

- » Extra wide treads: 750W x 180Dmm
- » Platform sizes:
3 to 9 steps - 800W x 400Dmm
10 to 15 steps - 800W x 460Dmm
- » Easy slope 48° angle which is for use in areas where there is space available, enabling you to turn around & descend the steps facing forward
- » Welded expanded steel platform & treads with full handrails either side of the steps
- » The units incorporate kick boards on 3 sides of the platform & knee rails around the platform
- » Mobile on 2 x 200mm black rubber tyred wheels & 2 x 125mm rubber tyred castors mounted on the easy action unique grip lift mechanism
- » 6 step units & above are sent folded for delivery - easy to erect
- » Platform handrail height: 1000mm


MS4107
£1150.70


RETRO-FIT LIFTING BARRIER

Optional barrier fitted to the front (entry) of the platform of this range of steps

Model	Price
SB410GS	£93.15

Why Choose Me?

- ✓ Extra wide treads & platform
- ✓ Easy slope 48° angle so the steps can be descended like normal stairs
- ✓ Features our unique grip lift mechanism for speed, ease & safety (preventing ascent in mobile mode)



MS4107

No of Treads	Platform Height mm	Overall Size H x W x D mm	Weight kg	Model	Price
3	690	1690 x 960 x 1065	42	MS4103	£554.35
4	920	1920 x 960 x 1270	51	MS4104	£741.55
5	1150	2150 x 960 x 1475	69	MS4105	£878.65
6	1380	2380 x 980 x 1680	82	MS4106	£1013.90
7	1610	2610 x 1030 x 1885	96	MS4107	£1150.70
8	1840	2840 x 1080 x 2090	109	MS4108	£1293.20
9	2070	3070 x 1130 x 2295	123	MS4109	£1426.80
10	2300	3300 x 1180 x 2560	136	MS4110	£1560.25
11	2530	3530 x 1230 x 2765	154	MS4111	£1693.55
12	2760	3760 x 1280 x 2970	173	MS4112	£1827.05
13	2990	3990 x 1320 x 3175	192	MS4113	£2187.50
14	3220	4220 x 1360 x 3380	211	MS4114	£2353.80
15	3450	4450 x 1400 x 3585	230	MS4115	£2512.95



Safety, Strength & Durability

**PLEASE CHECK THE OVERALL
HEIGHT BEFORE ORDERING**

Fort® Wide Tread 'Trojan S' BS EN 131 Professional Mobile Steps

- » **Certified to BS EN 131 Professional**
- » Extra wide treads:-
Easy slope - 48°: 750W x 180Dmm
Standard slope - 54°: 750W x 160Dmm
- » Platform size: 800W x 500Dmm
- » There are two versions available: easy slope 48° angle which is for use in areas where there is space available, enabling the user to turn around & descend the steps facing forward. Standard slope 54° angle for use in areas where space is limited
- » The units incorporate kick boards on 3 sides of the platform
- » Platform handrail height: 1000mm
- » 6 step units & above are sent folded for delivery. Easy to erect
- » Fitted with lever operated, retractable castors & safety bar



Safety, Strength & Durability

PLEASE CHECK THE OVERALL HEIGHT BEFORE ORDERING



REAR INWARD OPENING GATE

To allow access from the rear of the platform an inward opening gate can be factory fitted to the rear of the platform handrail

Model	Price
GS400Z	£191.45




**FROM ONLY
£833.45**

GS4107

**Lever Operated
Retractable Castors
& Safety Bar**

Why Choose Me?

- ✓ Extra wide treads & 500mm deep comfort platform
- ✓ Easy slope version can be descended like normal stairs
- ✓ Option of a rear inward opening gate to create a walkthrough

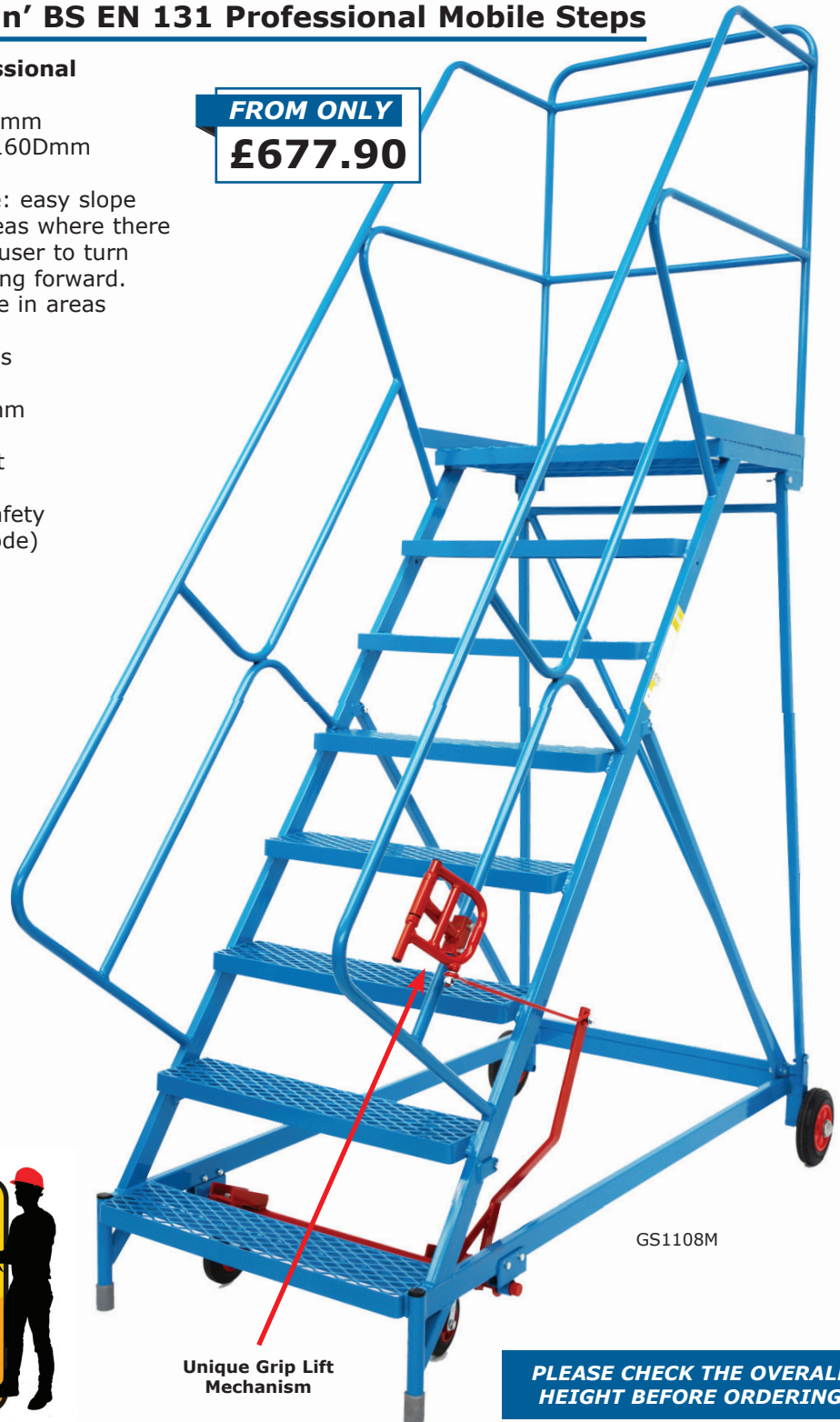


No of Treads	Platform Height mm	Standard Slope Version - 54° angle				Easy Slope Version - 48° angle			
		Overall Size H x W x D mm	Weight kg	Model	Price	Overall Size H x W x D mm	Weight kg	Model	Price
Fort Wide Tread Grey 'Trojan S' Mobile Steps - Mobile on 2 x 200mm Black Rubber tyred wheels & 2 x 125mm Rubber castors with lever operated retractable castors & a safety bar									
3	690	1690 x 1000 x 1095	42	GS4003	£833.45	1690 x 1000 x 1125	45	GS4103	£874.00
4	920	1920 x 960 x 1260	50	GS4004	£1059.25	1920 x 960 x 1310	55	GS4104	£1114.45
5	1150	2150 x 960 x 1430	69	GS4005	£1193.80	2150 x 960 x 1515	74	GS4105	£1263.90
6	1380	2380 x 980 x 1595	82	GS4006	£1446.60	2380 x 980 x 1725	88	GS4106	£1579.25
7	1610	2610 x 1030 x 1765	96	GS4007	£1731.90	2610 x 1030 x 1930	103	GS4107	£1889.95
8	1840	2840 x 1080 x 1930	112	GS4008	£1977.85	2840 x 1080 x 2140	117	GS4108	£2152.10
9	2070	3070 x 1130 x 2095	123	GS4009	£2257.85	3070 x 1130 x 2345	132	GS4109	£2456.55
10	2300	3300 x 1180 x 2265	136	GS4010	£2517.30	3300 x 1180 x 2555	146	GS4110	£2723.40
11	2530	3530 x 1230 x 2430	146	GS4011	£2855.90	3530 x 1230 x 2760	166	GS4111	£3076.90
12	2760	3760 x 1280 x 2600	175	GS4012	£3109.55	3760 x 1280 x 2965	186	GS4112	£3360.05

Fort® Wide Tread 'Trojan' BS EN 131 Professional Mobile Steps

- » **Certified to BS EN 131 Professional**
- » Extra wide treads:-
Easy slope - **48°**: 750W x 180Dmm
Standard slope - **54°**: 750W x 160Dmm
- » Platform size: 800W x 500Dmm
- » There are two versions available: easy slope 48° angle which is for use in areas where there is space available, enabling the user to turn around & descend the steps facing forward. Standard slope 54° angle for use in areas where space is limited
- » The units incorporate kick boards on 3 sides of the platform
- » Platform handrail height: 1000mm
- » 6 step units & above are sent folded for delivery. Easy to erect
- » Features our unique grip lift mechanism for speed, ease & safety (preventing ascent in mobile mode)

FROM ONLY
£677.90



GS1108M

Unique Grip Lift Mechanism

PLEASE CHECK THE OVERALL HEIGHT BEFORE ORDERING



Safety, Strength & Durability

Why Choose Me?

- ✓ Extra wide treads & 500mm deep comfort platform
- ✓ Features our unique grip lift mechanism for speed, ease & safety (preventing ascent in mobile mode)
- ✓ Easy slope version can be descended like normal stairs



No of Treads	Platform Height mm	Standard Slope Version - 54° angle						Easy Slope Version - 48° angle					
		Overall Size H x W x D mm	Wt kg	Phenolic Non-slip Treads		Expanded Steel Treads		Overall Size H x W x D mm	Wt kg	Phenolic Non-slip Treads		Expanded Steel Treads	
				Model	Price	Model	Price			Model	Price	Model	Price
Fort Wide Tread Blue 'Trojan' Mobile Steps - Mobile on 2 x 200mm Black Rubber tyred wheels & 2 x 125mm Rubber tyred castors with a unique Grip Lift Mechanism													
3	690	1790 x 960 x 1165	40	GS1003R	£687.40	GS1003M	£677.90	1790 x 960 x 1195	42	GS1103R	£703.55	GS1103M	£694.25
4	920	2020 x 960 x 1330	48	GS1004R	£836.20	GS1004M	£824.80	2020 x 960 x 1380	51	GS1104R	£867.75	GS1104M	£856.50
5	1150	2250 x 960 x 1500	65	GS1005R	£981.45	GS1005M	£968.15	2250 x 960 x 1585	69	GS1105R	£1040.70	GS1105M	£1027.50
6	1380	2460 x 980 x 1665	78	GS1006R	£1183.20	GS1006M	£1168.15	2480 x 980 x 1795	82	GS1106R	£1272.50	GS1106M	£1257.45
7	1610	2710 x 1030 x 1835	91	GS1007R	£1385.05	GS1007M	£1368.20	2710 x 1030 x 1835	96	GS1107R	£1472.85	GS1107M	£1455.75
8	1840	2940 x 1080 x 2000	103	GS1008R	£1585.30	GS1008M	£1566.40	2940 x 1080 x 2000	109	GS1108R	£1676.25	GS1108M	£1657.65
9	2070	3170 x 1130 x 2165	117	GS1009R	£1788.85	GS1009M	£1768.15	3170 x 1130 x 2165	123	GS1109R	£1881.70	GS1109M	£1861.00
10	2300	3400 x 1180 x 2335	129	GS1010R	£1996.05	GS1010M	£1973.35	3400 x 1180 x 2335	136	GS1110R	£2090.45	GS1110M	£2067.85
11	2530	3630 x 1230 x 2500	146	GS1011R	£2196.10	GS1011M	£2171.65	3630 x 1230 x 2500	154	GS1111R	£2288.95	GS1111M	£2264.45
12	2760	3860 x 1280 x 2670	164	GS1012R	£2398.00	GS1012M	£2371.65	3860 x 1280 x 2670	173	GS1112R	£2494.30	GS1112M	£2467.85

Fort® Easy Slope Platforms

- » Easy slope 48° incline - for safe & easy use
- » Platform size: 800W x 1200Dmm
- » Extra wide treads: 750W x 180Dmm
- » Features our unique grip lift mechanism for speed, ease & safety (preventing ascent in mobile mode)
- » Expanded steel mesh treads & platform
- » Mobile on 2 x 200mm rubber wheels & 2 x 125mm rubber castors

Standard Fort Easy Slope Platforms

- » Removable platform chains on three sides for access

BS EN 131 Professional Fort Easy Slope Platforms

- » Certified to BS EN 131 Professional
- » Inward opening gates on 3 sides of the platform



Safety, Strength & Durability



MS9106M



Optional retro-fit lifting barrier to the front (entry) of the platform of the BS EN 131 Professional Version

Model	Price
SB910GS	£93.15



GS9108M

No of Treads	Platform Height mm	Standard Version - Powder Coated Blue or Galvanised Finish					BS EN 131 Version - Powder Coated Grey				
		Overall Size H x W x D mm	Weight kg	Finish	Model	Price	Overall Size H x W x D mm	Weight kg	Finish	Model	Price
2	460	-	-	-	-	-	1460 x 960 x 1479	62	Powder Coated	GS9102M	£1261.40
3	690	1690 x 950 x 1826	74	Powder Coated	MS9103M	£907.60	1690 x 960 x 1686	72	Powder Coated	GS9103M	£1485.10
				Galvanised	MS9103G	£996.60	-	-	-	-	-
4	920	1920 x 950 x 2033	82	Powder Coated	MS9104M	£984.05	1920 x 960 x 1893	82	Powder Coated	GS9104M	£1708.90
				Galvanised	MS9104G	£1082.40	-	-	-	-	-
5	1150	2150 x 950 x 2240	90	Powder Coated	MS9105M	£1060.55	2150 x 960 x 2100	101	Powder Coated	GS9105M	£1932.60
				Galvanised	MS9105G	£1170.70	-	-	-	-	-
6	1380	2380 x 950 x 2447	98	Powder Coated	MS9106M	£1162.30	2380 x 980 x 2307	115	Powder Coated	GS9106M	£2156.05
				Galvanised	MS9106G	£1284.20	-	-	-	-	-
7	1610	-	-	-	-	-	2610 x 1030 x 2514	130	Powder Coated	GS9107M	£2432.85
8	1840	-	-	-	-	-	2840 x 1080 x 2721	144	Powder Coated	GS9108M	£2709.50

Fort® Service Platforms

- » Ideal for access to mezzanine floors & for servicing large plant machinery/automotive equipment
- » Two versions available: easy slope 48° angle enabling the user to descend the steps facing forward. Standard slope 54° angle for use in areas where space is limited
- » Extra large platform size: 800W x 1700Dmm
- » Extra wide treads: 750W x 182Dmm
- » Expanded steel mesh treads & platform
- » Mobile on 2 x 200mm rubber wheels & 2 x 125mm rubber castors
- » Complete with fixed handrail at the end of the platform & 1 hook-on platform handrail which can be fitted on either side of the platform (handrail with centre rail for 2 to 6 tread units & handrail with centre & toe rail for 7 to 10 treads)
- » 7 step units & above are sent folded for delivery - easy to erect



3YR
GUARANTEE

Why Choose Me?

- ✓ Ideal for use with mezzanine floors & large machinery
- ✓ Features our unique grip lift mechanism for speed, ease & safety (preventing ascent in mobile mode)
- ✓ Huge platform size of 800W x 1700D
- ✓ Easy slope version can be descended like normal stairs



Hook on Handrail - MSPX02



MSP9304 &
2 x MSPX03

Accessories

Description	Model	Price
Double Rail Hook on Handrail to suit 2 to 6 tread	MSPX01	£81.30
Triple Rail Hook on Handrail to suit 7 to 10 tread	MSPX02	£98.30
Platform Extension to suit 2 to 6 tread	MSPX03	£74.00
Platform Extension to suit 7 to 10 tread	MSPX04	£98.30

Platform Extension MSPX03 or MSPX04. Used to bridge the gap between the step platform & anything you are trying to access



MSP9210 &
1 x MSPX04

No of Treads	Platform Height mm	Standard Slope Version - 54° Angle				Easy Slope Version - 48° Angle			
		Overall Size H x W x D mm	Weight kg	Model	Price	Overall Size H x W x D mm	Weight kg	Model	Price
2	500	1580 x 960 x 2015	97	MSP9202	£1073.20	1580 x 960 x 2058	98	MSP9302	£1076.90
3	750	1830 x 960 x 2197	107	MSP9203	£1151.90	1830 x 960 x 2283	108	MSP9303	£1156.30
4	1000	2080 x 960 x 2379	117	MSP9204	£1242.40	2080 x 960 x 2508	118	MSP9304	£1246.10
5	1250	2330 x 980 x 2561	127	MSP9205	£1427.50	2330 x 980 x 2805	128	MSP9305	£1433.70
6	1500	2580 x 1030 x 2743	137	MSP9206	£1560.20	2580 x 1030 x 3030	138	MSP9306	£1609.25
7	1750	2830 x 1080 x 2925	147	MSP9207	£1728.75	2830 x 1080 x 3255	148	MSP9307	£1737.45
8	2000	3080 x 1130 x 3107	157	MSP9208	£1894.80	3080 x 1130 x 3480	158	MSP9308	£1904.80
9	2250	3330 x 1180 x 3289	167	MSP9209	£2032.20	3330 x 1180 x 3705	168	MSP9309	£2040.80
10	2500	3580 x 1230 x 3471	177	MSP9210	£2167.55	3580 x 1230 x 3930	178	MSP9310	£2178.75